

TOWNSHIP N<sup>o</sup>. XII RANGE N<sup>o</sup>. XI

Surveyed by Benjamin F. Stone - May, 1831.  
Subdivided by Stone & Dana 1865.

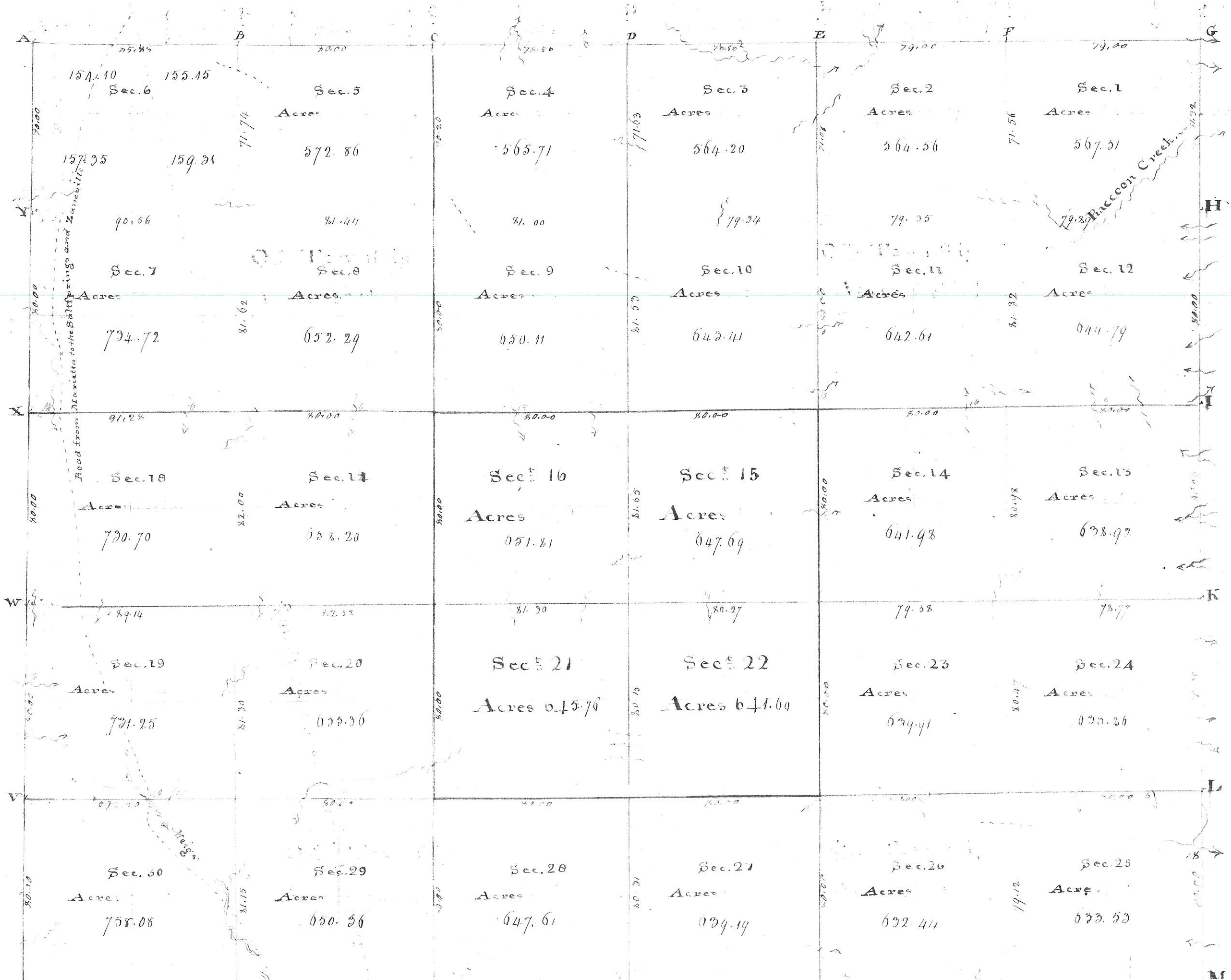
Quality of the land on the interior section lines

Between  
Sections

34 & 35 Low hills timbered with W. Oak, Hickory, Beech, Gum, Poplar  
26 " 27 Land hilly, timbered with Black Oak, Hickory, Oak & White brush  
24 " 25 Land hilly poor soil, timbered with W. & B. Oak, Hickory &c -  
23 " 26 Land hilly, thin soil, timbered with W. & B. Oak, Hickory brush  
32 " 33 Over a ridge good farming land, timbered with B. Oak, Dogwood, spice  
28 " 29 Land hilly, timbered with W. & B. Oak, Hickory, Beech, Dogwood &c  
22 " 27 Steep side hill, broken by gullies, timbered with B. Oak, Beech &c  
21 " 28 High ridges, poor land, timbered with W. & B. Oak, shrub Oak brush  
20 " 29 Good bottom, timbered with buckeye, sugar tree, good upland for wheat  
19 " 30 Upland middling, soil for wheat  
22 " 23 Land hilly poor soil, timbered with B. Oak, Hickory, Oak brush  
14 " 15 Hilly broken good soil, timbered with B. Oak, Poplar, Beech &c

Between  
Sections

12 & 13 Land hilly, timbered with B. Oak, B. Oak, Poplar, Dogwood &c  
11 " 14 Poor hills, timbered with B. Oak, Hickory, & B. Oak brush  
20 " 21 Land hilly middling soil for wheat, timbered with W. & B. Oak, Hickory  
16 " 17 Hilly strong soil, timbered with Poplar, W. Oak, Gum, Beech &c  
10 " 15 Moderate hills, timbered with W. & B. Oak, Beech, Gum, Dogwood &c  
9 " 16 Land hilly good soil, timbered with B. Oak, Beech, Poplar, sugar tree  
8 " 17 Land hilly middling for wheat, timbered with W. & B. Oak, Beech &c  
7 " 18 Low hills good wheat & grazing land, timbered with W. & B. Oak, Poplar  
10 " 11 Land hilly good soil for wheat, timbered with W. Oak, Poplar &c  
2 " 3 Land hilly generally good for wheat, timbered with W. & B. Oak  
8 " 9 High hill poor & rocky, timbered with Chestnut & B. Oak  
4 " 5 Hilly good strong soil timbered with W. Oak, Poplar, Beech &c



1  
 2  
 3  
 4  
 5  
 6  
 7  
 8  
 9  
 10  
 11  
 12  
 13  
 14  
 15  
 16  
 17  
 18  
 19  
 20  
 21  
 22  
 23  
 24  
 25  
 26  
 27  
 28  
 29  
 30