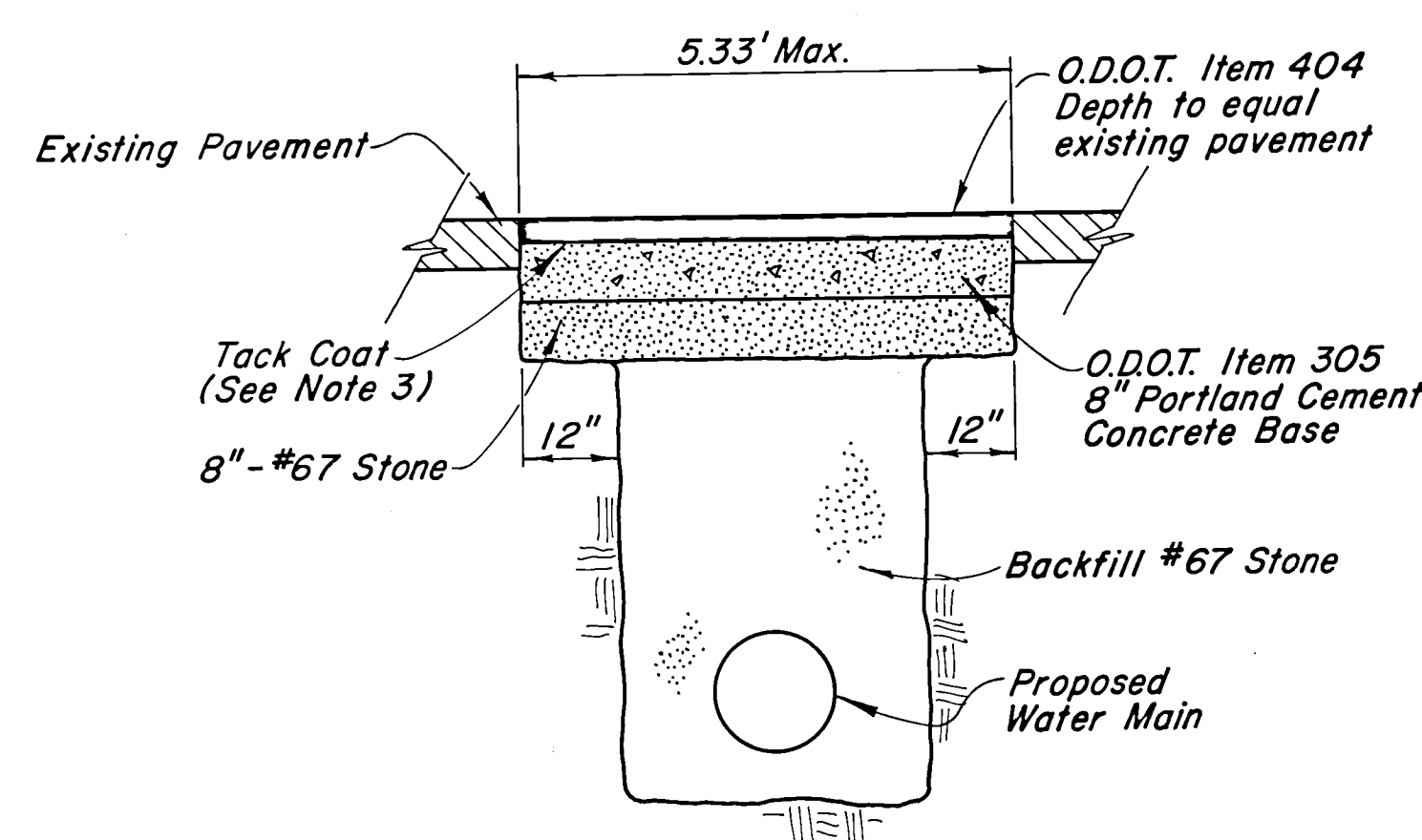
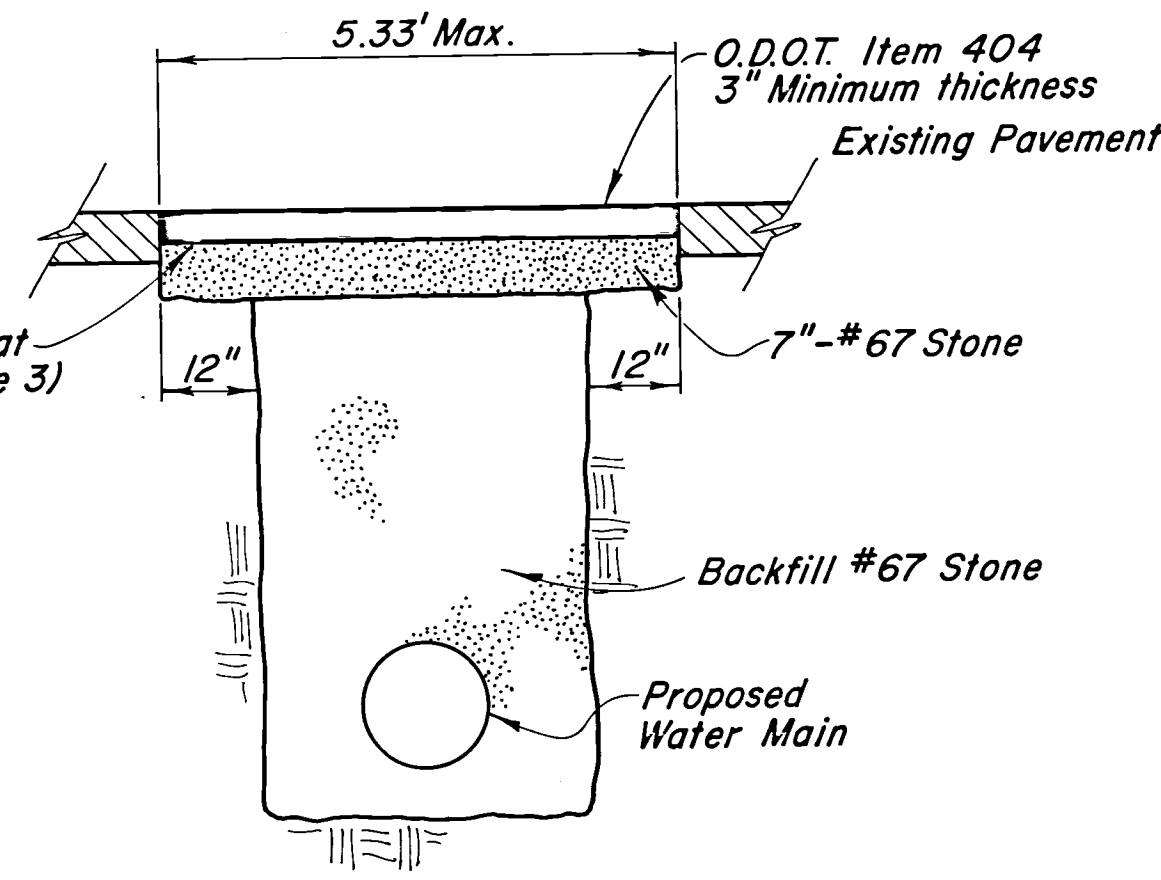


## PAVEMENT REPLACEMENT STREETS



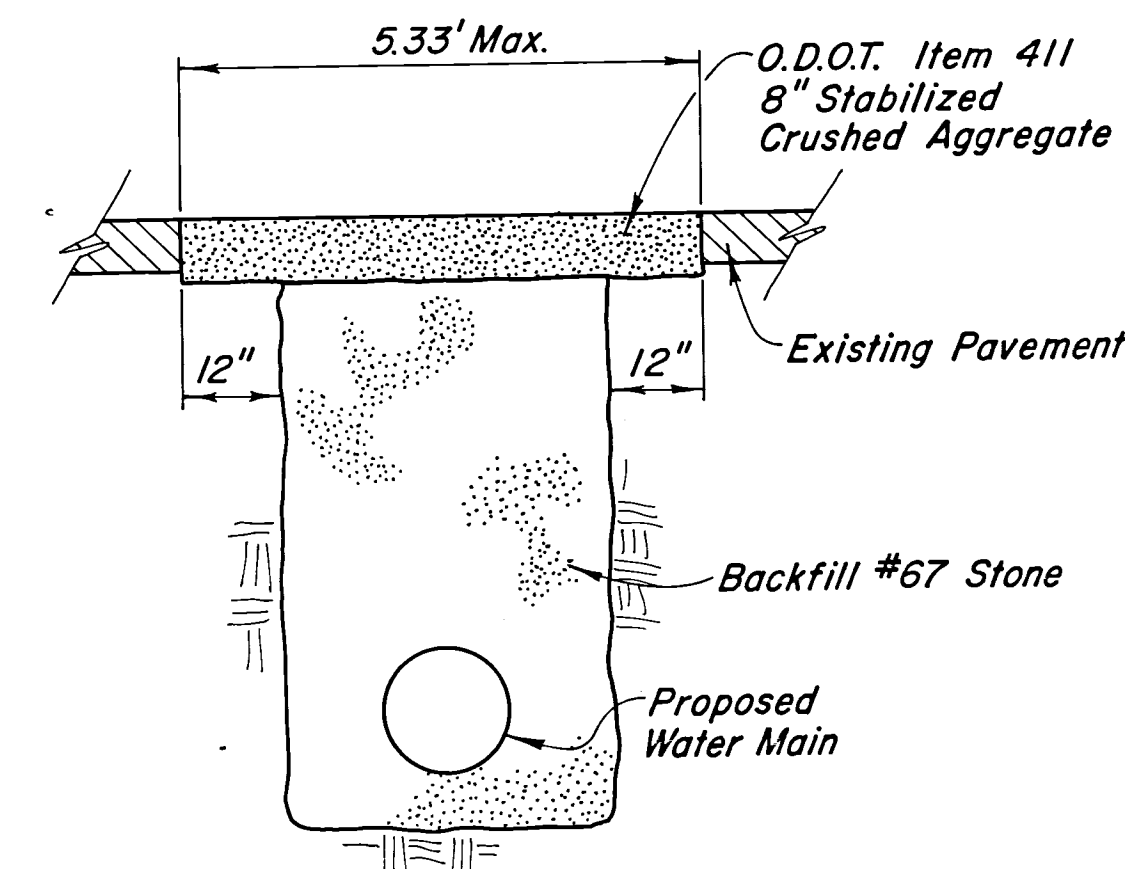
ASPHALT OVER BRICK OR CONCRETE

NOT TO SCALE



ASPHALT OVER STONE BASE

NOT TO SCALE



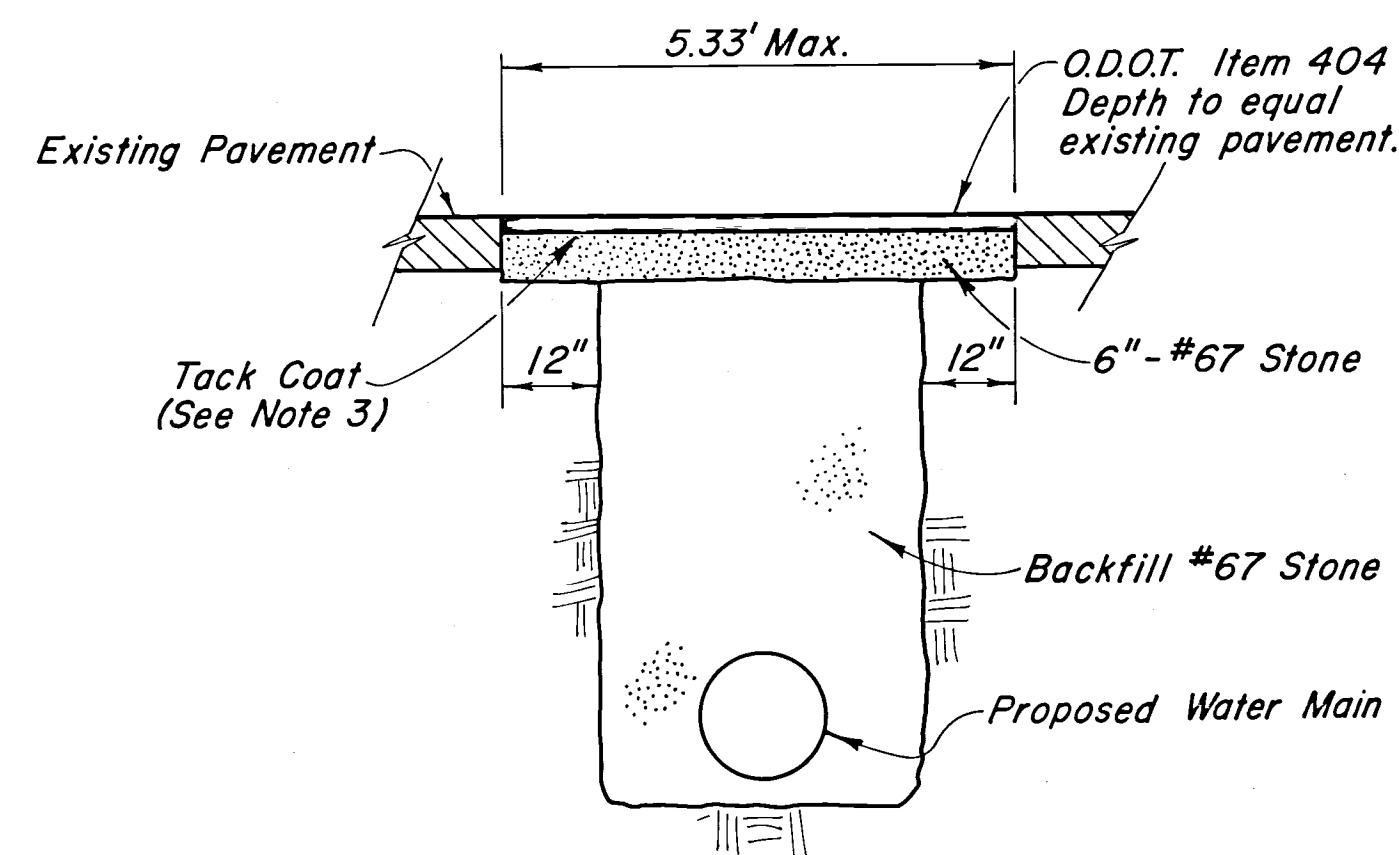
GRAVEL OR CINDER

NOT TO SCALE

## PAVEMENT REPLACEMENT DRIVEWAYS

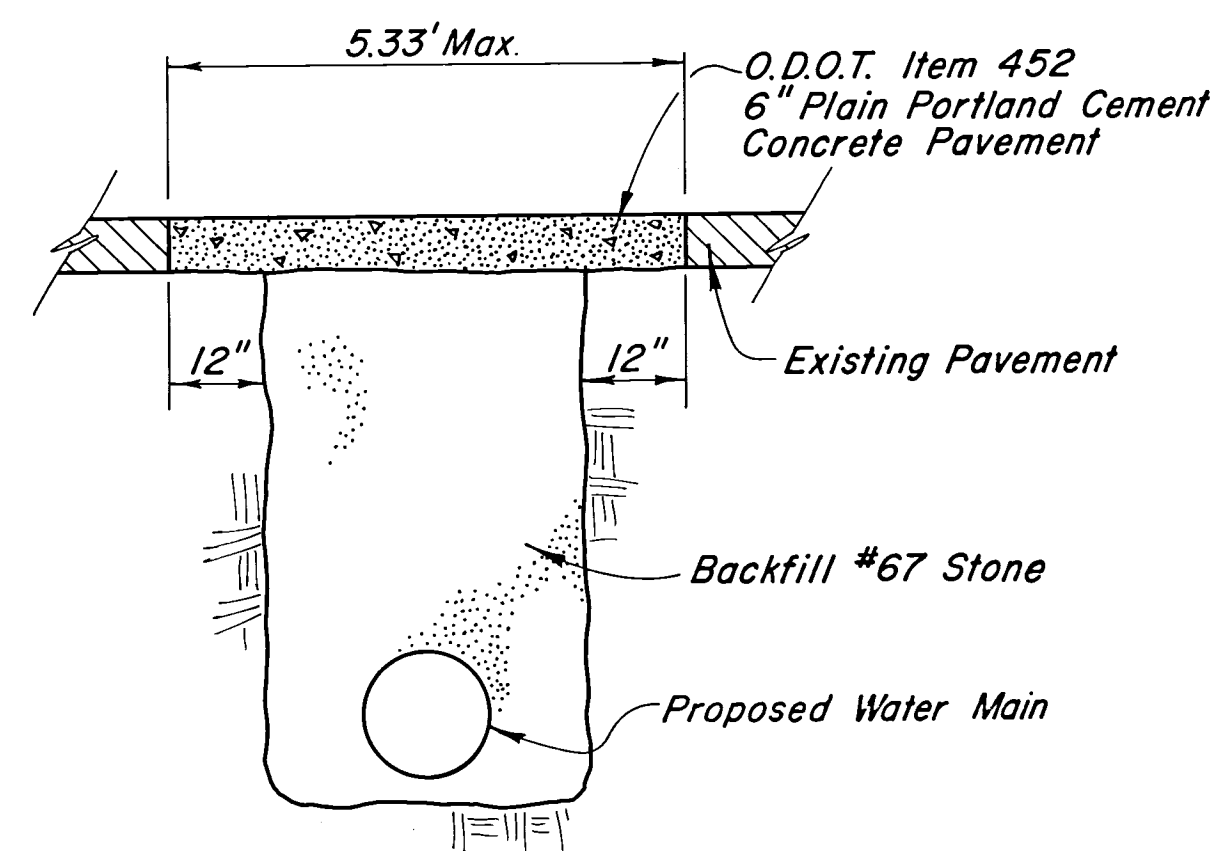
### NOTES

- 1) All trenches shall be backfilled as per O.D.O.T. Item 603 utilizing #67 Stone or other material as approved by the City of Zanesville, Ohio.
- 2) Permanent pavement shall not be done until ordered by the City. The edge shall be cut vertical and trimmed to provide a straight line.
- 3) Tack Coat, Item 407 Bituminous Material, 702.02, RC-70, RC-250 or 702.04, RS-1, RS-2 or MS-2 applied at a rate of 0.1 gal. per sq. yd. and cover consisting of crushed gravel or limestone size No. 9.
- 4) Wearing surface less than 2 feet in width remaining adjacent to curb after excavation shall be removed and replaced.



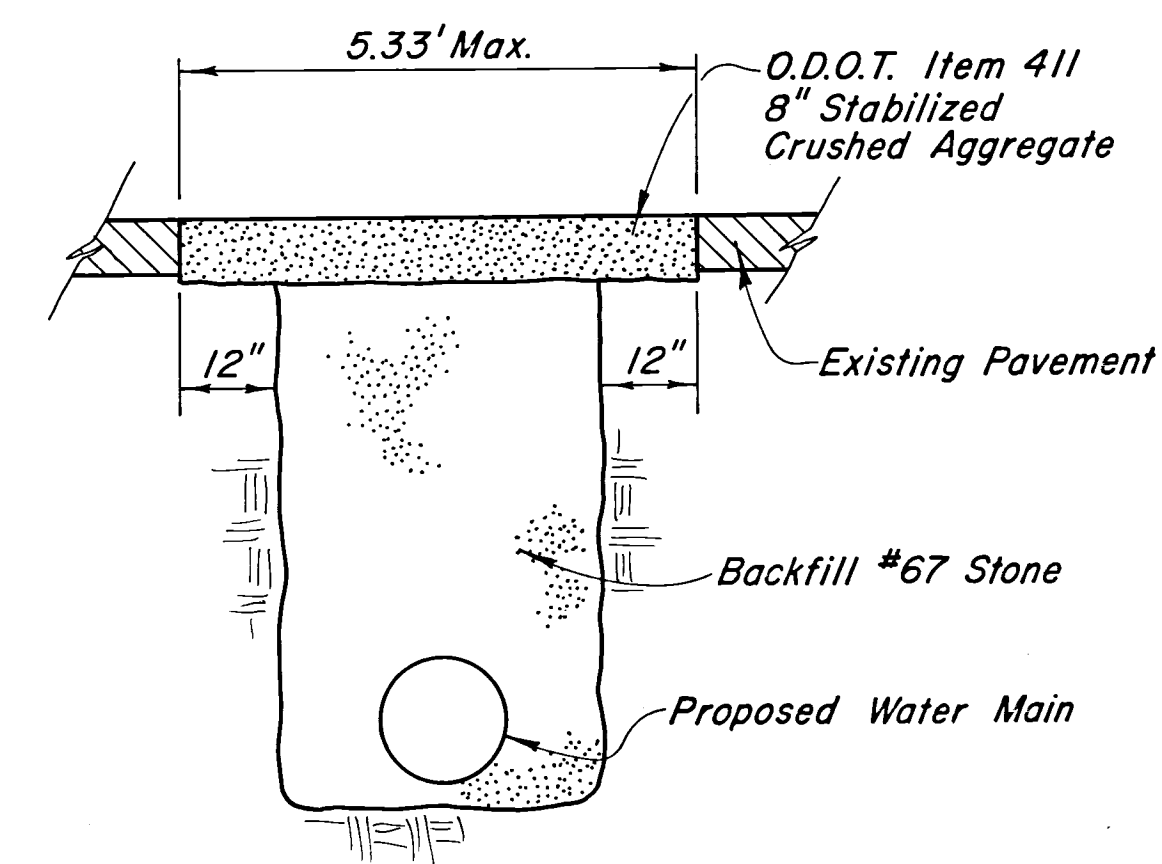
ASPHALT DRIVEWAY

NOT TO SCALE



CONCRETE DRIVEWAY

NOT TO SCALE



GRAVEL OR CINDER DRIVEWAY

NOT TO SCALE

JOHN E. FOSTER AND ASSOCIATES, INC.  
555 Buttles Avenue, Columbus, Ohio 43215

CITY OF ZANESVILLE, OHIO  
CENTRAL LINDEN TAYLOR  
WATER MAIN

### PAVEMENT DETAILS

DESIGNED	DRAWN	TRACED	CHECKED	REVIEWED	DATE	REVISED
D.R.K.	W.E.H.	W.E.H.	E.L.F.	J.E.F.	6-10-88	