

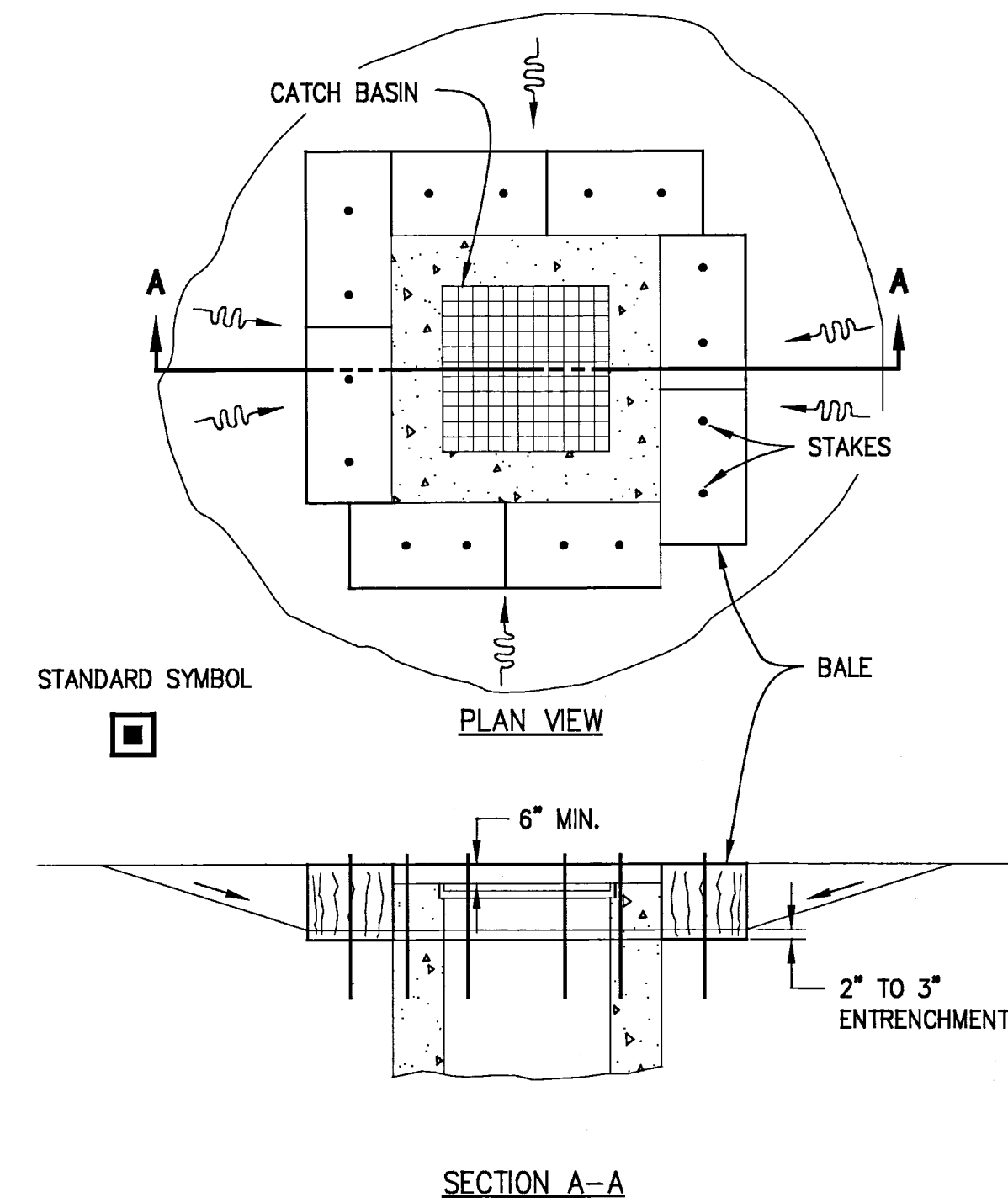
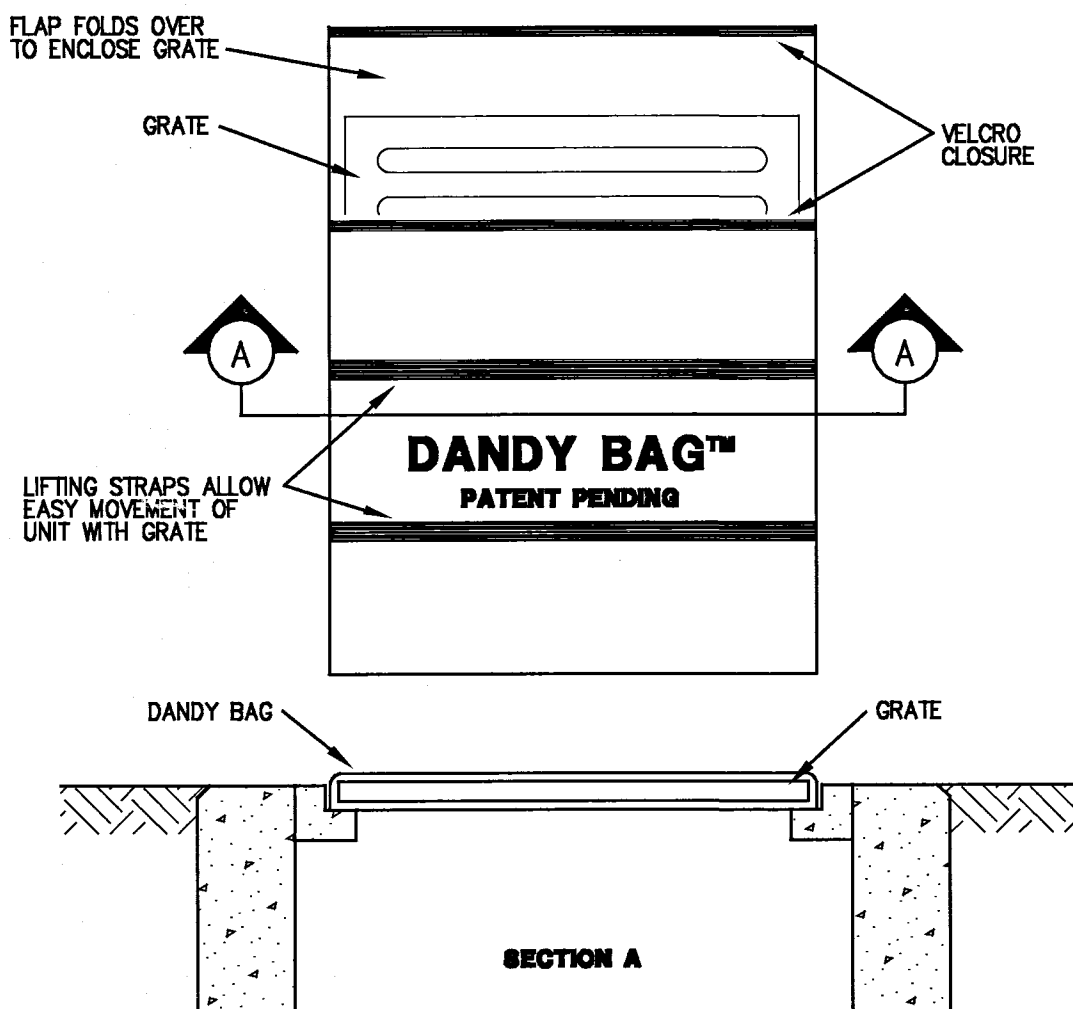
**SEDIMENT AND EROSION CONTROL NOTES**

THE CLEANUP AND DISPOSAL OF EXCESS EXCAVATED MATERIALS SHALL BE DONE AS SOON AS PRACTICAL AND AS THE PROJECT ENGINEER MAY DIRECT.

STRAW BALES, SILT FENCES, OR OTHER FILTERING DEVICES SHALL BE MAINTAINED AT AREAS OF STOCKPILED MATERIALS, EXCAVATED AREAS, CATCH BASINS, AND OTHER STORM WATER INLET STRUCTURES IN CONSTRUCTION AREAS TO CONTROL SILT RUNOFF.

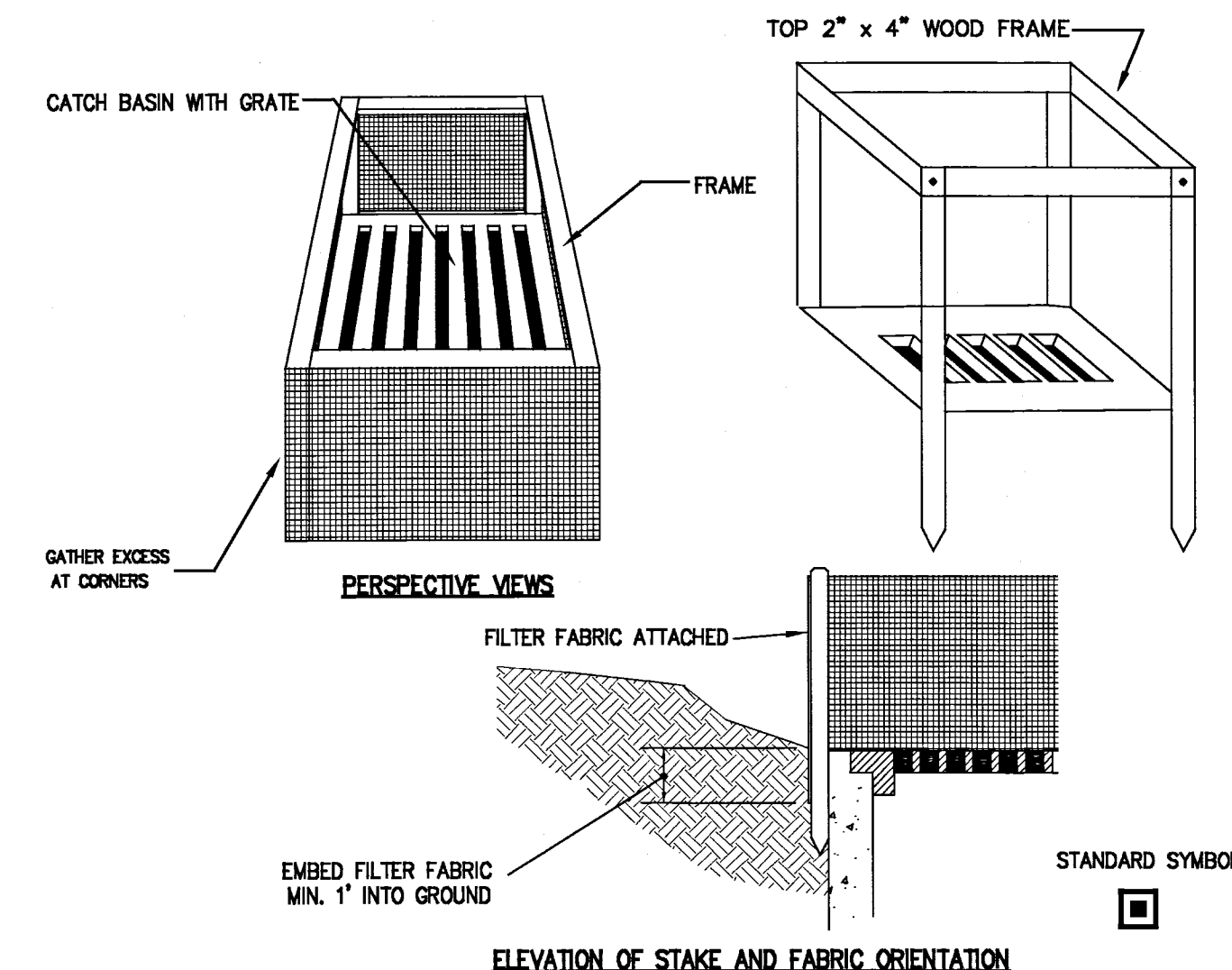
ALL DEWATERING FLOWS SHALL BE KEPT FREE OF SILT, SEDIMENTS, DEBRIS, AND OTHER POLLUTANTS THROUGH APPROPRIATE MEANS (SETTLING BASINS, FILTER, ETC.); FOLLOWING THIS, THE FLOWS SHALL ONLY BE RELEASED DIRECTLY INTO STORM SEWERS, STREAM CHANNELS, TO OTHER STABILIZED DRAINAGE COURSES AND NOT ONTO EXPOSED SOILS, STEEP SLOPES OR ANY OTHER SITE WHERE FLOWS COULD CAUSE FURTHER EROSION.

ALL DISTURBED AREAS SHALL BE SEEDED AND MULCHED IN ACCORDANCE WITH THE REQUIREMENTS OF THE SPECIFICATIONS.



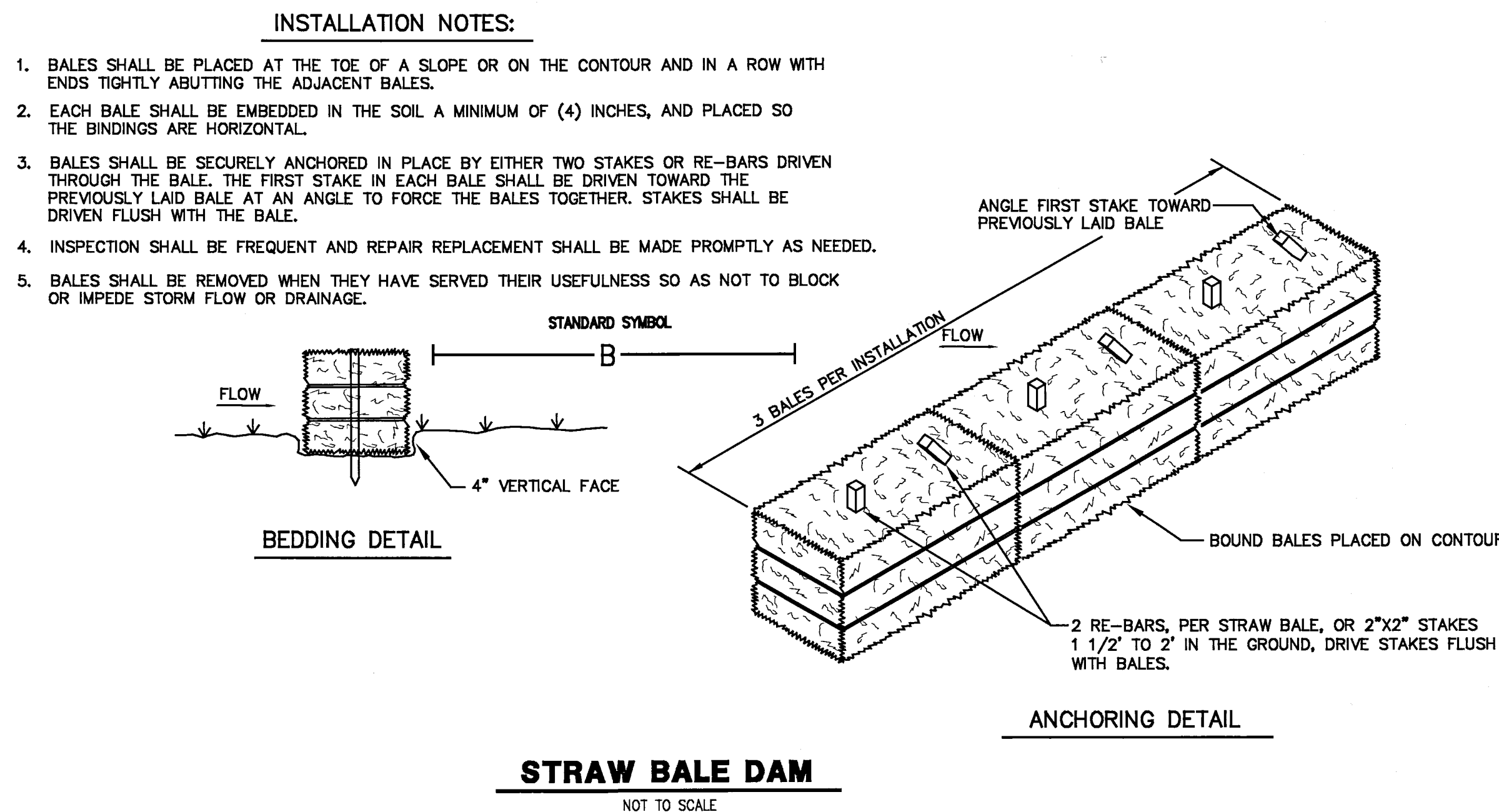
**STRAW BALE CATCH BASIN FILTER**

NOT TO SCALE



**SILT FENCE CATCH BASIN FILTER**

NOT TO SCALE



**CATCH BASIN FILTER**

NOT TO SCALE