

WM STA. 2+28 TO WM STA. 2+48
20' L.F. OF CONCRETE ENCASEMENT;
PROVIDE STREAM BANK PROTECTION

APPROX. 10' FROM TEE, CUT EXISTING 2" WM
AND INSTALL A 2" FLUSH HYDRANT ASSEMBLY

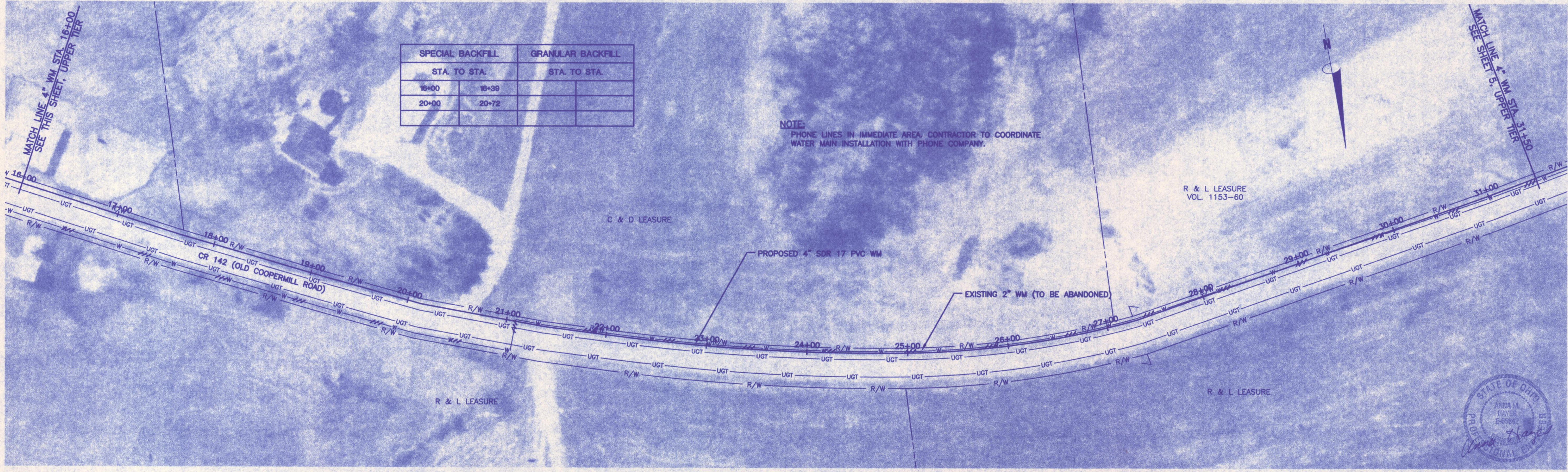
WM STA. 1+30
CONNECTION TO EXISTING 2" WM.
(SEE NOTE 1);
4" x 4" x 4" TEE;
(2) 4" GATE VALVES AND BOXES;
4" x 2" REDUCER

WM STA. 0+24 TO WM STA. 0+69
45' L.F. OF 4" HIGHWAY CROSSING,
8" STEEL ENCASEMENT PIPE;
(TUNNEL OPTION 1)

WM STA. 0+00
CONNECTION TO EXISTING 4" PVC WM,
(SEE NOTE 1);
4" GATE VALVE AND BOX

- NOTES:**
1. CONTRACTOR SHALL FIELD VERIFY EXISTING WATER MAIN SIZE AND TYPE. PROPER TRANSITION FITTINGS, SLEEVES AND SPOOL PIECES SHALL BE USED AS NECESSARY FOR CONNECTION. PROVIDE OWNER WITH 48 HOURS ADVANCE NOTICE PRIOR TO MAKING CONNECTION TO EXISTING WATER MAIN.
 2. PHONE LINES IN IMMEDIATE AREA. CONTRACTOR TO COORDINATE WATER MAIN INSTALLATION WITH PHONE COMPANY.
 3. ALL WATER SERVICES SHALL BE RECONNECTED BY THE CONTRACTOR, AND SHALL BE IDENTIFIED BY THE MAYSVILLE REGIONAL WATER DISTRICT.

SPECIAL BACKFILL		GRANULAR BACKFILL	
STA. TO STA.		STA. TO STA.	
2+94	3+50		
14+05	16+00		



SPECIAL BACKFILL		GRANULAR BACKFILL	
STA. TO STA.		STA. TO STA.	
16+00	18+39		
20+00	20+72		

NOTE:
PHONE LINES IN IMMEDIATE AREA. CONTRACTOR TO COORDINATE WATER MAIN INSTALLATION WITH PHONE COMPANY.

P:\PR32541\CADD\LAYOUT.DWG 12-5-02 1:27:56 pm DYE

NO.	REVISIONS	DATE	BY	CHK.

Burgess & Niple, Limited Parkersburg, WV



**MAYSVILLE REGIONAL WATER DISTRICT
WATER DISTRIBUTION SYSTEM IMPROVEMENTS
LENT ROAD
CONTRACT 03-1**

JOB NO.	32541
DESIGNED BY:	AMH
DRAWN BY:	DRD
CHECKED BY:	LES
APPROVED BY:	LES
DATE:	DEC 2002

4" WATER MAIN STA. 0+00 TO STA. 31+50

SCALE: 1"=50'	
SHEET NO. 4	OF 8

