

ROADWAY DRAINAGE (D)

Item No	Station		Side	Pipe for Storm Sewers under Rd	Outlet Pipes for Storm Sewers	Pipe for Roadway Drainage	Rd Pipe under Dr.
	From	To		Count	Lin. Ft.	12"	12"
1-D	1110+80	1112+40	Lt	30	118	140	20
2-D	1114+00	1115+00	Rt	30	118	140	20
Totals				30*	118	140	20

* Left end of pipe to be blocked with cemented stopper.

CATCH BASINS (I)

Item No	Station	Side	Catch Basins	
			No. 3 Mod. Units	No. 2-2 Units
1-I	1112+41	Lt	1	1
2-I	1114+00	Rt	1	1
Totals				

CONCRETE CURB & GUTTER (C)

Item No	Station		Side	Type & Integral Curb & Gutter
	From	To		Lin. Ft.
1-C	1111+00	1115+00	Rt	395
Totals				

DRIVES AND APPROACHES (A)

Item No	Station	Side	5' x 8' Mod. Appr. for Base Course		Pipe for Drives	Details on Sheet No.
			Side Rd Surf. Treat. Sq. Yds.	Approach Curves	12"	
2-A	1110+45	Lt	19.6	12.0	34	
3-A	1111+61	Lt	19.6	17.5		
4-A	1112+00	Rt	19.6	26.5		
5-A	1113+75	Lt	19.6	45.0		
6-A	1114+75	Rt	19.6	40.0		
Totals			98.0	141.0	34	

PIPE REMOVAL (R)

Item No	Station	Side	Remove Existing Pipe	
			Var. Sizes LF	12" LF
1-R	1110+45	Lt	26	
2-R	1112+65	Rt	16	
Total			42	

MASONRY REMOVAL (M)

Item No	Station	Side	Remove Existing Masonry	
			Ret. Wall	Cur. Wall
1-M	1112+86	Rt	1.1*	
Total				

* Remove section 5' long, 3' high from end of masonry wall and let new fill spill around.

STRUCTURES 20' SPAN & UNDER

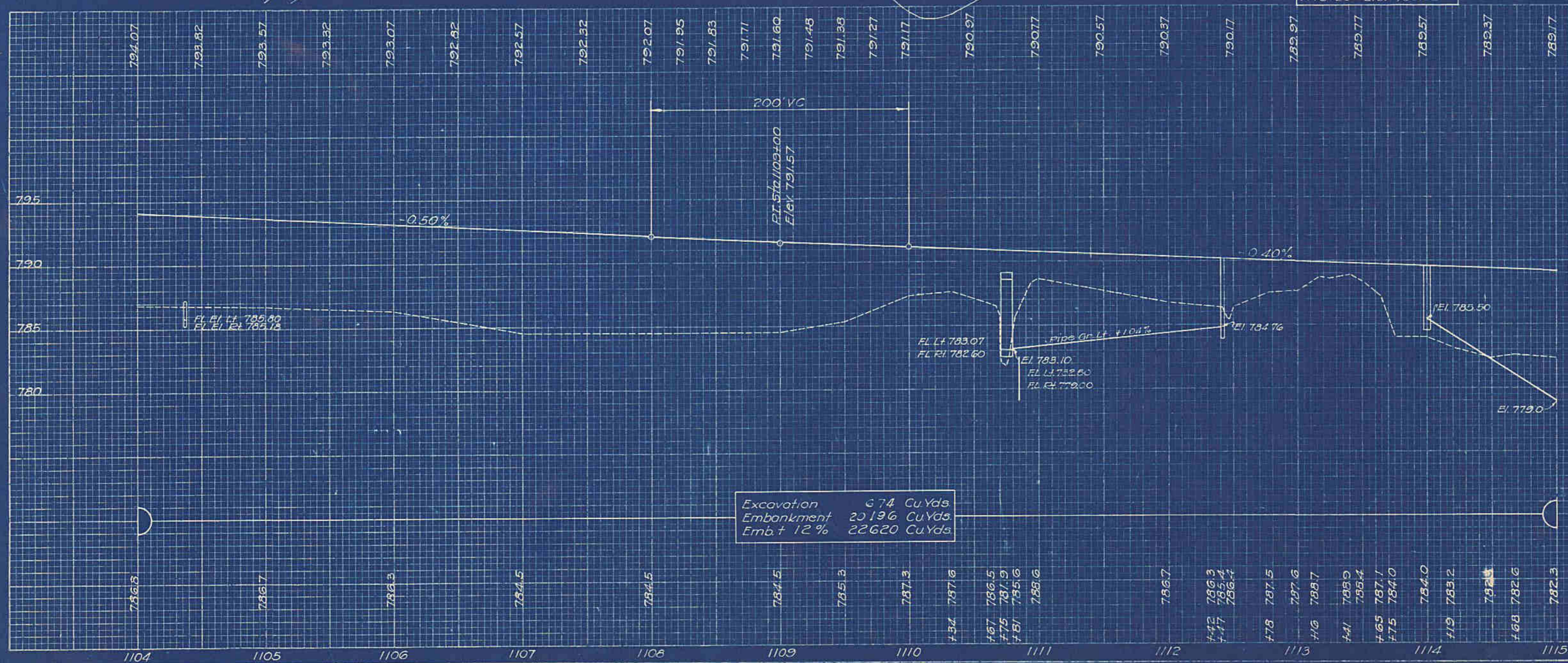
Struc No	Station	Description	Details on Sheet No.
15	1104+37	Std. 18" x 12.4'-0" Pipe Culvert	149
16	1110+75	Std. 9' x 6' x 95' Large Box Culvert	155
17	1110+85	3" x 110'-0" Wrought Iron Pipe Casing	No detail
18	1112+22	Remove Existing 1'-3" x 1'-0" x 34.8' Stone Box Culv.	162

GUARD RAIL (G)

Item No	Station		Side	Guard Rail
	From	To		Lin. Ft.
1-G	1110+27	1111+23	Rt	96

PAVEMENT REMOVAL (P)

Item No	Station		8" RC Conc. Pavement		
	From	To	Length	Width	Sq. Yds.
1-P	1104+00	1115+00	1100	16	1955.6



Sta 1104+00 to Sta 1115+00