

UNTREATED SEPTIC CONNECTIONS

THIS PLAN MAKES NO PROVISION FOR CONNECTING, NOR SHALL THE ENGINEER OR CONTRACTOR CONNECT, ANY UNTREATED SEPTIC DRAINAGE INTO THE HIGHWAY DRAINAGE SYSTEM. ANY PIPE CARRYING UNTREATED SEPTIC FLOW SHALL BE PLUGGED WITH CLASS C CONCRETE AT THE RIGHT-OF-WAY LINE. PAYMENT FOR PLUGGING SHALL BE INCLUDED IN THE CONTRACT PRICE FOR ITEM 203 EXCAVATION.

REVIEW OF DRAINAGE FACILITIES

BEFORE ANY WORK IS STARTED ON THE PROJECT AND AGAIN BEFORE FINAL ACCEPTANCE BY THE STATE, REPRESENTATIVES OF THE STATE AND THE CONTRACTOR, ALONG WITH LOCAL REPRESENTATIVES, SHALL MAKE AN INSPECTION OF ALL EXISTING SEWERS WHICH ARE TO REMAIN IN SERVICE AND WHICH MAY BE AFFECTED BY THE WORK. THE CONDITION OF THE EXISTING CONDUITS AND THEIR APPURTENANCES SHALL BE DETERMINED FROM FIELD OBSERVATIONS. RECORDS OF THE INSPECTIONS SHALL BE KEPT IN WRITING BY THE STATE.

ALL NEW CONDUITS, INLETS, CATCH BASINS AND MANHOLES CONSTRUCTED AS PART OF THE PROJECT SHALL BE FREE OF ALL FOREIGN MATTER AND IN A CLEAN CONDITION BEFORE THE PROJECT WILL BE ACCEPTED BY THE STATE.

ALL EXISTING SEWERS INSPECTED INITIALLY BY THE ABOVE MENTIONED PARTIES SHALL BE MAINTAINED AND LEFT IN A CONDITION REASONABLY COMPARABLE TO THAT DETERMINED BY THE ORIGINAL INSPECTION. ANY CHANGE IN THE CONDITION RESULTING FROM THE CONTRACTOR'S OPERATION SHALL BE CORRECTED BY THE CONTRACTOR TO THE SATISFACTION OF THE ENGINEER.

PAYMENT FOR ALL OPERATIONS DESCRIBED ABOVE SHALL BE INCLUDED IN THE CONTRACT PRICE FOR THE PERTINENT 603 CONDUIT ITEMS.

RESIDENTIAL AND COMMERCIAL DRAINAGE CONNECTIONS

EXISTING ROOF DRAINS, FOOTING DRAINS, OR YARD DRAINS, DISTURBED BY THE WORK, SHALL BE PROVIDED WITH UNOBSTRUCTED OUTLETS BY CONNECTING A CONDUIT THROUGH THE CURB OR INTO A DRAINAGE STRUCTURE. THE LOCATION, TYPE, SIZE AND GRADE OF THE NEW CONDUIT REQUIRED TO REPLACE OR EXTEND THE EXISTING DRAIN WILL BE DETERMINED BY THE ENGINEER.

THE FOLLOWING CONDUIT TYPES MAY BE USED: 707.19 PS46 MIN. 707.17 NON-PERFORATED, SS 931, SS 942, OR SS 944.

THE FOLLOWING ESTIMATED QUANTITIES HAVE BEEN INCLUDED IN THE GENERAL SUMMARY FOR USE AS DIRECTED BY THE ENGINEER FOR THE WORK NOTED ABOVE.

603, 6" CONDUIT, TYPE E, FOR DRAINAGE CONNECTION	100 LIN. FT.
603, 6" CONDUIT, TYPE F, FOR DRAINAGE CONNECTION	100 LIN. FT.

NONE OF THE ABOVE MATERIALS SHALL BE ORDERED BY THE CONTRACTOR UNTIL AUTHORIZED BY THE ENGINEER.

UNRECORDED SANITARY CONNECTIONS

ANY UNRECORDED ACTIVE CONNECTION TO A SANITARY SEWER ENCOUNTERED DURING CONSTRUCTION SHALL BE RECONNECTED TO THE EXISTING SANITARY SEWER TO THE SATISFACTION OF THE ENGINEER.

THE FOLLOWING CONDUIT TYPES MAY BE USED: SS 945 OR 707.19 PS46 MIN., SS 942 SS 931, 706.01, 706.02, OR 706.08 WITH JOINTS AS PER 706.11 OR 706.12.

THE FOLLOWING ESTIMATED QUANTITIES HAVE BEEN INCLUDED IN THE GENERAL SUMMARY FOR USE AS DIRECTED BY THE ENGINEER FOR THE WORK NOTED ABOVE:

603, 6" CONDUIT, TYPE B, FOR SANITARY	50 LIN. FT.
603, 6" CONDUIT, TYPE C, FOR SANITARY	50 LIN. FT.

REMOVAL AND REPLACEMENT OF SANITARY CONNECTIONS MAY BE NECESSARY TO PLACE THE 603 ITEMS BETWEEN STATIONS 33+50 AND 41+91, LEFT SIDE. THE MINIMUM PIPE SIZE FOR LATERALS SHALL BE 6" AND THE MINIMUM GRADE SHALL BE ONE (1) PERCENT. THESE LATERALS MAY BE PLACED TO MEET THE INVERT OF THE EXISTING 8" SANITARY SEWER IN ORDER TO FACILITATE THE MINIMUM GRADE NOTED ABOVE AND TO PROVIDE CLEARANCE UNDER THE DRAINAGE CONDUITS.

MANHOLES, CATCH BASINS AND INLETS REMOVED OR ABANDONED

ALL CASTINGS SHALL BE CAREFULLY REMOVED AND STORED WITHIN THE RIGHT-OF-WAY FOR SALVAGE BY THE CITY OF ZANESVILLE FORCES.

PAYMENT FOR ALL OF THE ABOVE SHALL BE INCLUDED IN THE CONTRACT PRICE FOR THE PERTINENT 202 ITEM.

ITEM 407, TACK COAT

THE RATE OF APPLICATION OF THE 407 TACK COAT SHALL BE SUBJECT TO ADJUSTMENT AS DIRECTED BY THE ENGINEER. PLAN QUANTITIES INDICATE AN AVERAGE APPLICATION RATE OF 0.075 GALLONS PER SQUARE YARD OF TACK COAT FOR ESTIMATING PURPOSES ONLY.

DUST CONTROL

THE CONTRACTOR SHALL FURNISH AND APPLY WATER AND CALCIUM CHLORIDE FOR DUST CONTROL AS DIRECTED BY THE ENGINEER. THE FOLLOWING CONTINGENCY QUANTITIES HAVE BEEN INCLUDED FOR DUST CONTROL PURPOSES:

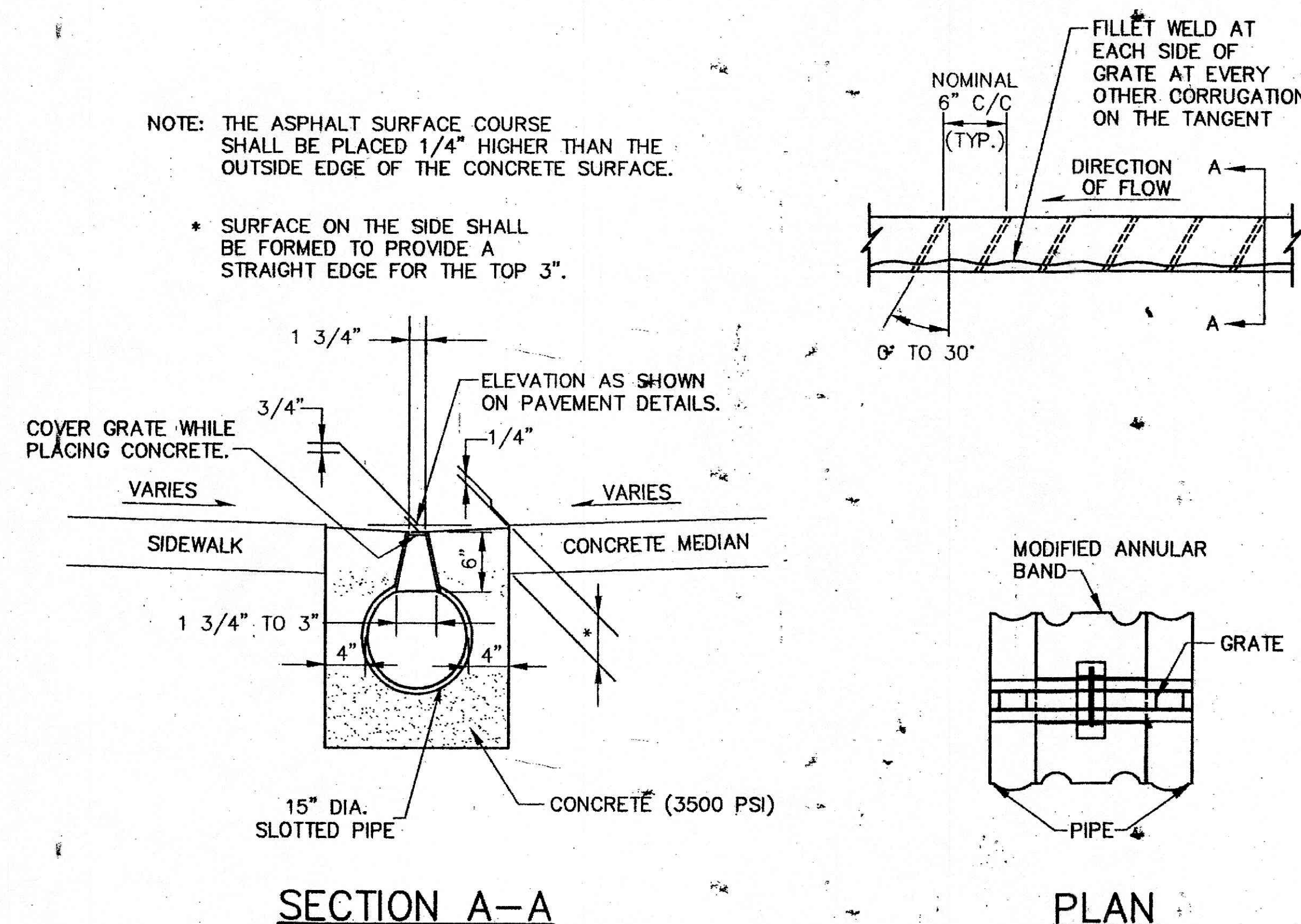
ITEM 616 CALCIUM CHLORIDE	5 TONS
ITEM 616 WATER	50 M GALLONS

ITEM 604, CATCH BASIN GRATE

EXISTING CATCH BASINS SHALL BE MODIFIED BY REPLACING THE EXISTING GRATES WITH BICYCLE SAFE GRATES. QUANTITIES AND LOCATIONS ARE SHOWN IN THE PLANS AND SHALL BE PAID FOR AT THE CONTRACT PRICE FOR ITEM 604, EACH, CATCH BASIN GRATE, TYPE 3A.

ITEM 603, 15" SLOTTED DRAIN

THE FOLLOWING DETAILS SHALL APPLY TO THE PROPOSED 15" SLOTTED DRAIN PIPE DRAINING THE CONCRETE AREA JUST WEST OF NINTH STREET.



15" SLOTTED DRAIN, TYPE 2

ITEM 603, TYPE B OR TYPE C CONDUIT, AS PER PLAN

ALL CONDUIT USED FOR THIS PROJECT AS PROPOSED STORM SEWER SHALL BE EITHER REINFORCED CONCRETE PIPE (706.02) OR VITRIFIED CLAY PIPE (706.08)

GENERAL NOTES

MUS-22-12.28

6
35