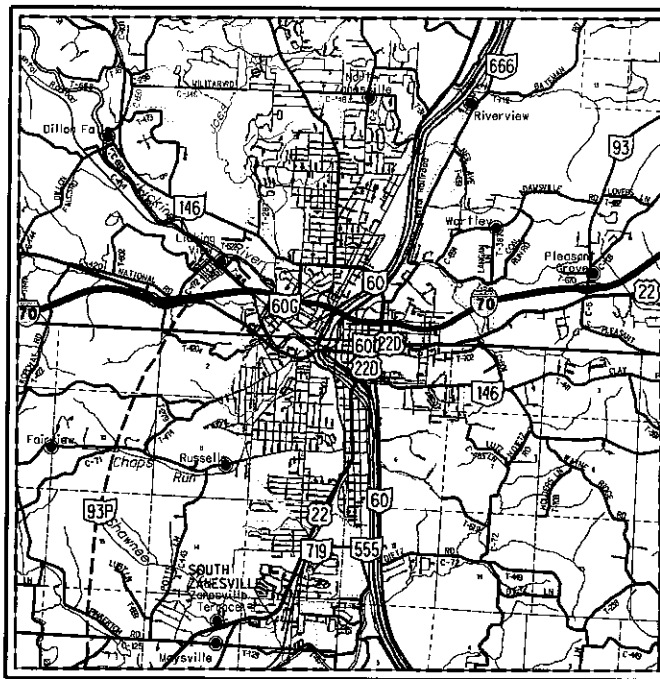


RIGHT OF WAY LEGEND SHEET

MUS-70-10.49

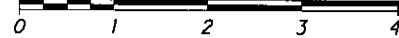
**MUSKINGUM COUNTY
CITY OF ZANESVILLE
FALLS TOWNSHIP
QTR. TWP. 4, T1N, R8W
WASHINGTON TOWNSHIP
QTR. TWP. 3, T1N, R7W
U.S.M.L.**



LOCATION MAP

LATITUDE: 39°56'56" LONGITUDE: -82°01'51"

SCALE IN MILES



NOTE:
THE LOCATION OF THE UNDERGROUND UTILITIES SHOWN ON THE PLANS ARE OBTAINED FROM THE OWNER OF THE UTILITIES AS REQUIRED BY SECTION 153.64 O.R.C.

INDEX OF SHEETS:

LEGEND SHEET	1
CENTERLINE PLATS	2-11
PROPERTY MAP	12
SUMMARY OF ADDITIONAL RIGHT OF WAY	13
DETAIL SHEETS	14-17

UTILITY OWNERS

LISTED BELOW ARE ALL UTILITIES LOCATED WITHIN THE PROJECT CONSTRUCTION LIMITS TOGETHER WITH THEIR RESPECTIVE OWNERS:

AT&T 160 NORTH SIXTH ST. ZANESVILLE, OHIO 43701 ATTN: BARRETT TAMASOVICH 740-454-3552 BT2178@ATT.COM	CITY OF ZANESVILLE 14 BUCKEYE DRIVE ZANESVILLE, OHIO 43701 ATTN: PAUL MILLS 740-455-0631 EXT. 2 PAUL.MILLS@COZ.ORG	CITY OF ZANESVILLE, DIVISION OF WASTE WATER 1730 MOXAHALA AVENUE ZANESVILLE, OHIO 43701 ATTN: SCOTT BROWN 740-455-0641 SCOTT.BROWN@COZ.ORG
AMERICAN ELECTRIC POWER CO. (TRANSMISSION) 700 MORRISON RD. GAHANNA, OHIO 43230 ATTN: MIKE CARR 614-552-1893 MDCARR@AEP.COM	AMERICAN ELECTRIC POWER (DISTRIBUTION) 850 TECH CENTER DRIVE GAHANNA, OHIO 43230 ATTN: PAUL PAXTON 614-883-6831 PTPAXTON@AEP.COM	

CONVENTIONAL SYMBOLS

County Line	Edge of Shoulder (Ex)
Township Line	Edge of Shoulder (Pr)
Section Line	Ditch / Creek (Ex)
Corporation Line	Ditch / Creek (Pr)
Fence Line (Ex)	Tree Line (Ex)
Center Line	Ownership Hook Symbol
Right of Way (Ex)	Property Line Symbol
Right of Way (Pr)	Break Line Symbol
Standard Highway Ease.(Ex)	Tree (Pr)
Standard Highway Ease.(Pr)	Tree (Ex)
Slope Ease.(Ex)	Shrub (Ex)
Slope Ease.(Pr)	Shrub (Remove)
Temporary Right of Way	Evergreen (Ex)
Channel Ease. (Pr)	Stump
Utility Ease. (Ex)	Evergreen (Remove)
Railroad	Wetland (Pr)
Guardrail (Ex)	Grass (Pr)
Construction Limits	Aerial Target
Edge of Pavement (Ex)	Post (Ex)
Edge of Pavement (Pr)	Mailbox (Ex)
	Light (Ex)
	Telephone Marker (Ex)
	Fire Hydrant (Ex)
	Water Meter (Ex)
	Water Valve (Ex)
	Utility Valve Unknown (Ex)
	Telephone Pole (Ex)
	Power Pole (Ex)
	Light Pole (Ex)

STRUCTURE KEY

	RESIDENTIAL
	COMMERCIAL
	OUT-BUILDING

LEGEND:

LA	= LIMITED ACCESS EASEMENT
SH	= STANDARD HIGHWAY EASEMENT
SL	= SLOPE EASEMENT
T	= TEMPORARY EASEMENT
CH	= CHANNEL EASEMENT

PROJECT DESCRIPTION

REMOVAL AND REPLACEMENT OF EXISTING CONCRETE AND ASPHALT CONCRETE MAINLINE AND RAMP PAVEMENT AND DETERIORATED SUBGRADE. REPLACEMENT OF MEDIAN BARRIER, LIGHTING, DRAINAGE SYSTEM, GUARDRAIL, AND SIGNING. FOURTEEN BRIDGES REHABBED OR REPLACED AND ONE BRIDGE REMOVED AND FILLED IN.

PROJECT CONTROL

ODOT VRS DERRIVED; PROJECT GROUND COORDINATE SYSTEM, RELATIVE TO NAD83(2011) STATE PLANE OHIO SOUTH ZONE 3402 SCALED ABOUT THE ORIGIN BY A PROJECT ADJUSTMENT FACTOR OF 1.00004436. ORTHOMETRIC HEIGHTS ARE RELATIVE TO NAVD88, GEOID 12A.

PLAN PREPARED BY:

FIRM NAME: ODOT, DISTRICT 5
PLANS PREPARED BY: CANDY SHOEMAKER
FIELD REVIEW BY: LUKE WALKER & CANDY SHOEMAKER
OWNERSHIP VERIFIED BY: LUKE WALKER
DATE COMPLETED: 3/19/2020

UNDERGROUND UTILITIES

Contact Two Working Days
Before You Dig



OHIO811, 8-1-1, or 1-800-362-2764
(Non-members must be called directly)

I, hereby certify that this plat is prepared under the direction and supervision of Luke Walker, P.S. #8701 for the Ohio Department of Transportation, and is based on a survey performed for the Ohio Department of Transportation in 2018 & 2019 by Buckley Group under the supervision of Robert C. Canter, P.S. #7226. The results of that survey are contained herein.

Underground utility locations are shown for informational purposes only. Though they are believed to be accurate, their location is as marked on the ground by the utility company per OHIO811 Confirmation Numbers A814900256-00A, A814900312-00A, A814900333-00A, A814900352-00A, A814900361-00A, A814900379-00A, B811700397-00B, B811700415-00B, B811700432-00B, B811700440-00B, B811700465-00B, and those markings subsequently being surveyed as a part of this project.

The horizontal geometry expressed herein is based on ODOT VRS derived; Project Ground Coordinate System, relative to NAD83(2011) State Plane Ohio South Zone 3402 scaled about the origin by a project adjustment factor of 1.00004436. Orthometric heights are relative to NAVD88, GEOID 12A.

As a part of this project I have reestablished the locations of the existing property lines and centerline of existing Right of Way for property takes contained herein.

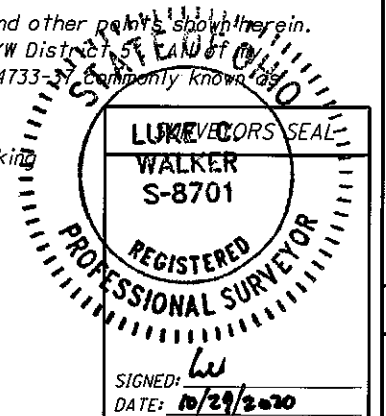
As a part of this project I have established the proposed property lines, calculated the Gross Take, present roadway occupied (PRO), Net Take and Net Residue; as well as prepared the legal descriptions necessary to acquire the parcels as shown herein.

As a part of this work I have set monuments at the proposed property corners, and other points shown herein. The iron pins and caps will be 3/4" x 30" rebar with aluminum cap stamped "ODOT R/W District 5". All work contained herein was conducted in accordance with Ohio Administrative Code 4733-37, commonly known as "A Minimum Standards for Boundary Surveys in the State of Ohio" unless so noted.

The words I and my as used herein are to mean that either myself or someone working under my direct supervision.

Luke Walker, Professional Surveyor # 8701

Date: 10/29/2020



I:\ProjectData\MUS\93006\400-Engineering\RW\Sheets\93006-RL001.dgn Sheet 10/27/2020 1:54:24 PM cshoemak

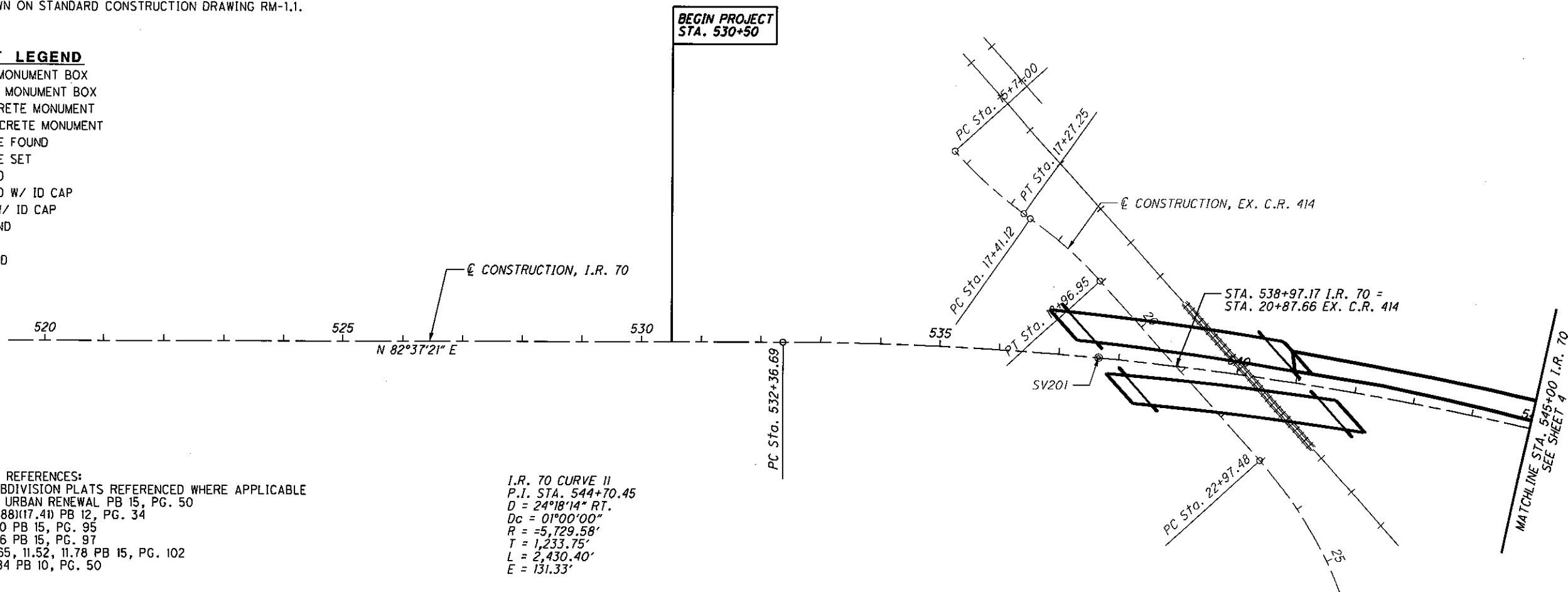
**MUSKINGUM COUNTY
FALLS TOWNSHIP
QTR. TWP. 4, T1N, R8W, U.S.M.L.**

SETTING OF ALL MONUMENTS SHALL BE PERFORMED BY A SURVEYOR REGISTERED IN THE STATE OF OHIO. THE MONUMENT ASSEMBLIES AND REFERENCE MONUMENTS WILL BE INSTALLED BY THE CONTRACTOR AT THE TIME OF CONSTRUCTION. THE IRON PIN AND CAP (WHEN REQUIRED) ARE TO BE INSTALLED BY THE CONTRACTOR'S SURVEYOR.

CHANGES OR ALTERATIONS TO THE LOCATION OF ANY MONUMENTS SHOWN IN THIS TABLE, REQUIRE PRIOR APPROVAL FROM THE DISTRICT REAL ESTATE ADMINISTRATOR OF THE OHIO DEPARTMENT OF TRANSPORTATION. IN THE EVENT THAT CHANGES OR ALTERATIONS ARE APPROVED, A REVISED CENTERLINE PLAT WITH THE NEW LOCATIONS SHALL BE RECORDED IN THE APPLICABLE COUNTY RECORDS AND THE OHIO DEPARTMENT OF TRANSPORTATION. SPECIFICATIONS FOR MONUMENT ASSEMBLIES, REFERENCE MONUMENTS AND RIGHT OF WAY MONUMENTS ARE SHOWN ON STANDARD CONSTRUCTION DRAWING RM-1.1.

MONUMENT LEGEND

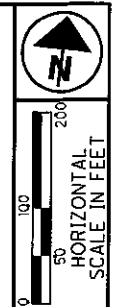
- ☒ EXISTING R/W MONUMENT BOX
- ▣ PROPOSED R/W MONUMENT BOX
- ⊙ EXISTING CONCRETE MONUMENT
- PROPOSED CONCRETE MONUMENT
- ⚡ RAILROAD SPIKE FOUND
- ⚡ RAILROAD SPIKE SET
- ⊙ I.P.F. IRON PIN FOUND
- ⊙ I.P.F. IRON PIN FOUND W/ ID CAP
- I.P.S. IRON PIN SET W/ ID CAP
- ⊙ I.P.F. IRON PIPE FOUND
- ⊙ I.P.S. IRON PIPE SET
- ⊙ P.K.F. P.K. NAIL FOUND
- ⊙ P.K.S. P.K. NAIL SET



PRIOR PLAN REFERENCES:
VARIOUS SUBDIVISION PLATS REFERENCED WHERE APPLICABLE
UNDERWOOD URBAN RENEWAL PB 15, PG. 50
MUS-60-(16.88)(17.41) PB 12, PG. 34
MUS-70-5.70 PB 15, PG. 95
MUS-70-9.66 PB 15, PG. 97
MUS-70-10.65, 11.52, 11.78 PB 15, PG. 102
MUS-40-12.84 PB 10, PG. 50

I.R. 70 CURVE II
P.I. STA. 544+70.45
D = 24°18'14" RT.
Dc = 01°00'00"
R = -5,729.58'
T = 1,233.75'
L = 2,430.40'
E = 131.33'

BEGIN PROJECT
STA. 530+50



PID NO. **93006**

R/W DESIGNER CS
R/W REVIEWER LW

CENTERLINE PLAT
STA. 520+00 TO STA. 545+00 I.R. 70

MUS-70-10.49

2 / 17

I:\ProjectData\MUS\93006\400-Engineering\RW\Sheets\93006-RP001.dgn_Sheet 10/26/2020 2:57:56 PM cshoenck

SURVEYOR'S REPORT	
PROJECT: MUS-70-10.49	PID: 93006
SCOPE: ESTABLISH CONTROL, CENTERLINE, AND RIGHT OF WAY	
TYPE: MAJOR REHAB	
DATUM AND COORDINATE SYSTEM	
COORDINATE SYSTEM:	STATE PLAN, OHIO SOUTH ZONE (3402)
HORIZONTAL REFERENCE DATUM:	NAD83 (2011)
ELLIPSOID:	GRS80
GRID TO GROUND MULTIPLIER (1/CSF):	1.00004436
ORIGIN OF COMBINED SCALE FACTOR:	(0,0)
VERTICAL REFERENCE DATUM:	NAVD88
GEOID MODEL:	GEOID 12A
UNITS:	US SURVEY FEET (sf)
ORIGINAL SURVEY SUBDIVISION:	U.S.M.L.
CITY/TOWNSHIP	CITY OF ZANESVILLE, FALLS AND WASHINGTON TOWNSHIPS
QUARTER SECTION/SECTION/LOT:	QUARTER TOWNSHIP 4, T1N R8W & QUARTER TOWNSHIP 3, T1N R7W
FILES	DESCRIPTION
I:\ProjectData\MUS\93006\400-Engineering\Civil\EngData\Geopak\job070.gpk	GEOPAK Coordinate Geometry File
I:\ProjectData\MUS\93006\400-Engineering\Civil\EngData\Geopak\93006_XCB01.tin	GEOPAK Ground Surface File
I:\ProjectData\MUS\93006\400-Engineering\Civil\EngData\Geopak\93006.prj	GEOPAK Project File
I:\ProjectData\MUS\93006\400-Engineering\RW\Basemaps\93006_BR002.dgn	Proposed Right-of-Way File
I:\ProjectData\MUS\93006\400-Engineering\RW\Basemaps\BuckleyGroup\93006_BR001.dgn	Existing Right-of-Way File
I:\ProjectData\MUS\93006\400-Engineering\Civil\Basemaps\93006_BK001.dgn	Centerline File

I, hereby certify that this plat is prepared under the direction and supervision of Luke Walker, P.S. #8701 for the Ohio Department of Transportation, and is based on a survey performed for the Ohio Department of Transportation in 2018 & 2019 by Buckley Group under the supervision of Robert C. Canter, P.S. #7226. The results of that survey are contained herein.

The horizontal geometry expressed herein is based on ODOT VRS derived; Project Ground Coordinate System, relative to NAD83(2011) State Plane Ohio South Zone 3402 scaled about the origin by a project adjustment factor of 1.00004436. Orthometric heights are relative to NAVD88, GEOID 12A.

As a part of this project I have reestablished the locations of the existing property lines and centerline of existing Right of Way for property takes contained herein.

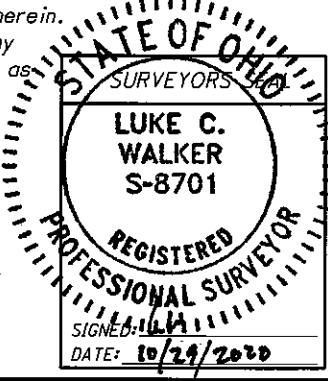
As a part of this project I have established the proposed property lines, calculated the Gross Take, present roadway occupied (PRO), Net Take and Net Residue; as well as prepared the legal descriptions necessary to acquire the parcels as shown herein.

As a part of this work I have set monuments at the proposed property corners, and other points shown herein. The iron pins and caps will be 3/4" x 30" rebar with aluminum cap stamped "ODOT R/W District 5". All of my work contained herein was conducted in accordance with Ohio Administrative Code 4733-37 commonly known as "A Minimum Standards for Boundary Surveys in the State of Ohio" unless so noted.

The words I and my as used herein are to mean that either myself or someone working under my direct supervision.

RECEIVED _____, 20__
RECORDED _____, 20__
BOOK _____ PAGE _____
_____ COUNTY RECORDER

Lu Walker
Luke Walker, Professional Surveyor # 8701
Date: 10/29/2020



PROJECT GROUND COORDINATES - US SURVEY FEET

PROJECT CONTROL POINTS

STATE PLANE GRID COORDINATES

MONUMENTS TO BE SET

DURING CONSTRUCTION

Project coordinates (U.S. Survey Feet) are relative to State Plane Grid coordinates (meters) by a Project Adjustment Factor of: 3.28097887

Horiz. Datum: NAD83 (2011) State Plane, Ohio South (3402) Vert. Datum: NAVD88

SV100 defined by GPS from CORS using Geoid 12A. All other elevations are established by leveling from SV100.

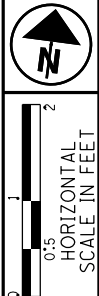
Main data table with columns: NAME, STATION, C/L of Construction IR 70, RT/LT, NORTH (US FT), EAST (US FT), ELEVATION (US FT), FEATURE, DESCRIPTION, NAME, NORTH (m), EAST (m), ORTHO HT (m), NORTH (US FT), EAST (US FT), MONUMENT ASSEMBLY, REFERENCE MONUMENT.

EXISTING MONUMENTATION CENTERLINE OF RIGHT OF WAY INTERSTATE 70-

EXISTING CENTERLINE CONTROL POINTS

Horiz. Datum: NAD83 (2011) State Plane, Ohio South (3402) Vert. Datum: NAVD88

Table with columns: NAME, STATION, OFFSET (US FT), RT/LT, NORTH (US FT), EAST (US FT), ELEVATION (US FT), FEATURE, DESCRIPTION, NAME, NORTH (m), EAST (m), ORTHO HT (m), NORTH (US FT), EAST (US FT).



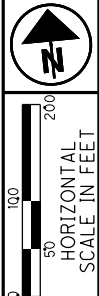
PID NO. 93006

CENTERLINE PLAT MONUMENT TABLE

MUS-70-10.49

I:\ProjectData\MUS_93006_400-Engineering\RW_Sheets\93006-RP002.dgn Sheet 10/26/2020 3:06:47 PM cshoemok

MUSKINGUM COUNTY
 CITY OF ZANESVILLE
 FALLS TOWNSHIP
 QTR. TWP. 4, T1N, R8W, U.S.M.L.

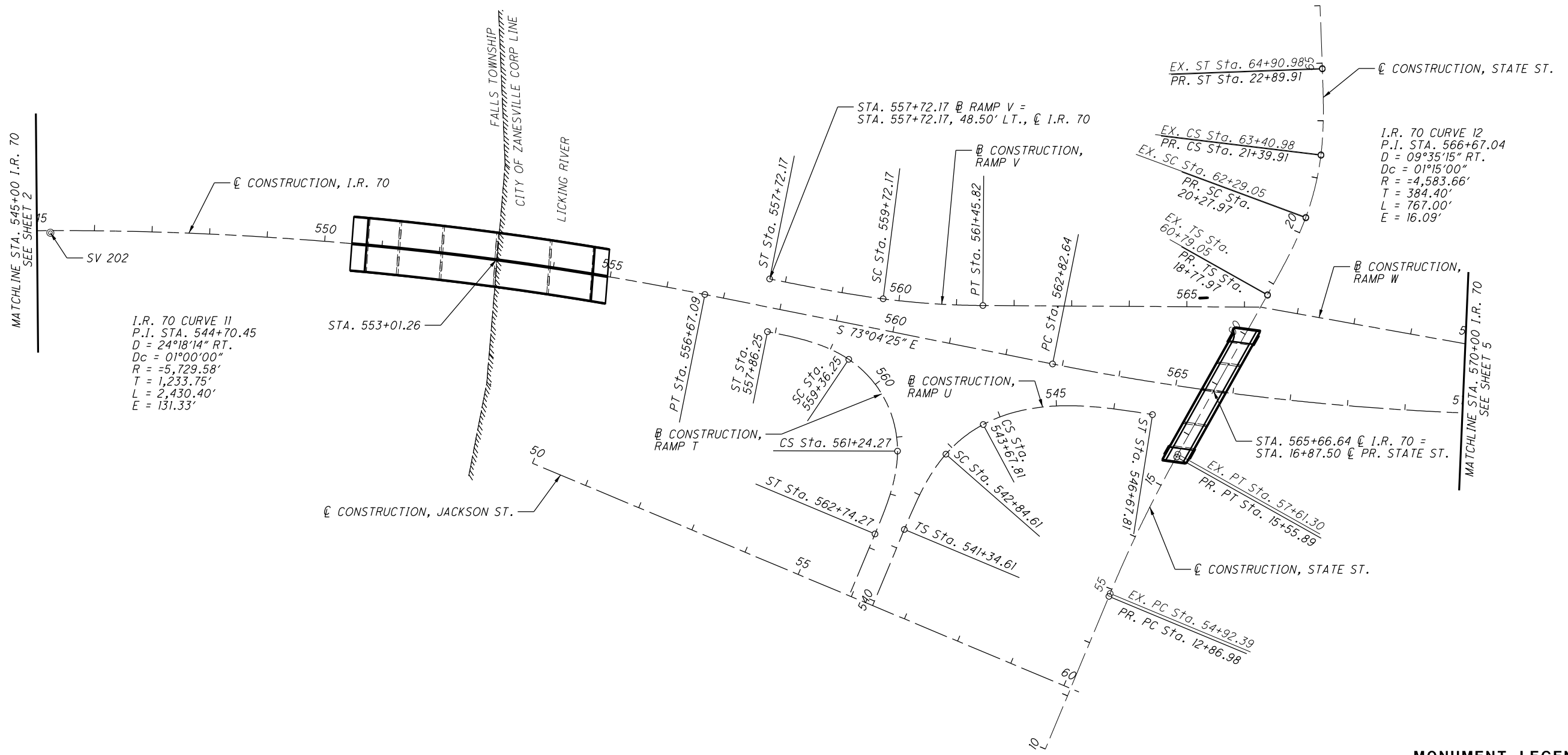


PID NO. **93006**
 R/W DESIGNER CS
 R/W REVIEWER LW

CENTERLINE PLAT
STA. 545+00 TO STA. 570+00 I.R. 70

MUS-70-10.49

4 / 17



- MONUMENT LEGEND**
- ☐ EXISTING R/W MONUMENT BOX
 - ▣ PROPOSED R/W MONUMENT BOX
 - ⊙ EXISTING CONCRETE MONUMENT
 - PROPOSED CONCRETE MONUMENT
 - ✕ RAILROAD SPIKE FOUND
 - ✕ RAILROAD SPIKE SET
 - I.P.F. IRON PIN FOUND
 - ⊙ I.P.F. IRON PIN FOUND W/ ID CAP
 - I.P.S. IRON PIN SET W/ ID CAP
 - ⊙ P.F. IRON PIPE FOUND
 - P.S. IRON PIPE SET
 - R.K.F. P.K. NAIL FOUND
 - R.K.S. P.K. NAIL SET

SETTING OF ALL MONUMENTS SHALL BE PERFORMED BY A SURVEYOR REGISTERED IN THE STATE OF OHIO. THE MONUMENT ASSEMBLIES AND REFERENCE MONUMENTS WILL BE INSTALLED BY THE CONTRACTOR AT THE TIME OF CONSTRUCTION. THE IRON PIN AND CAP (WHEN REQUIRED) ARE TO BE INSTALLED BY THE CONTRACTOR'S SURVEYOR.

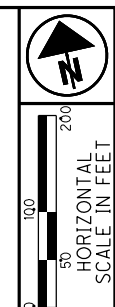
CHANGES OR ALTERATIONS TO THE LOCATION OF ANY MONUMENTS SHOWN IN THIS TABLE, REQUIRE PRIOR APPROVAL FROM THE DISTRICT REAL ESTATE ADMINISTRATOR OF THE OHIO DEPARTMENT OF TRANSPORTATION. IN THE EVENT THAT CHANGES OR ALTERATIONS ARE APPROVED, A REVISED CENTERLINE PLAT WITH THE NEW LOCATIONS SHALL BE RECORDED IN THE APPLICABLE COUNTY RECORDS AND THE OHIO DEPARTMENT OF TRANSPORTATION. SPECIFICATIONS FOR MONUMENT ASSEMBLIES, REFERENCE MONUMENTS AND RIGHT OF WAY MONUMENTS ARE SHOWN ON STANDARD CONSTRUCTION DRAWING RM-1.1.

I:\ProjectData\MUS\93006\400-Engineering\RW\Sheets\93006-RP003.dgn Sheet 10/26/2020 3:08:25 PM cshoemak

MUSKINGUM COUNTY CITY OF ZANESVILLE

MONUMENT LEGEND

- ☐ EXISTING R/W MONUMENT BOX
- ▣ PROPOSED R/W MONUMENT BOX
- ⊙ EXISTING CONCRETE MONUMENT
- PROPOSED CONCRETE MONUMENT
- ⚡ RAILROAD SPIKE FOUND
- ⚡ RAILROAD SPIKE SET
- I.R.F. IRON PIN FOUND
- ⊙ I.R.F. IRON PIN FOUND W/ ID CAP
- I.R.S. IRON PIN SET W/ ID CAP
- ⊙ I.R.P. IRON PIPE FOUND
- ⊙ I.R.S. IRON PIPE SET
- R.K.F. P.K. NAIL FOUND
- R.K.S. P.K. NAIL SET



PID NO. **93006**
R/W DESIGNER CS
R/W REVIEWER LW

CENTERLINE PLAT
STA. 570+00 TO STA. 592+00 I.R. 70

MUS-70-10.49
5/17

I.R. 70 CURVE 12
P.I. STA. 566+67.04
D = 09°35'15" RT.
Dc = 01°15'00"
R = 4,583.66'
T = 384.40'
L = 767.00'
E = 16.09'

STA. 576+74.71 @ RAMP W =
STA. 576+74.71, 43.00' LT., @ I.R. 70

STA. 578+89.19 @ I.R. 70 =
STA. 578+66.22 @ RAMP E

I.R. 70 SPIRAL 7
P.I. STA. 578+80.15
Ls = 300.00'
fs = 03°00'00"
LT = 200.03'
ST = 100.03'
x = 299.92'
y = 5.23'
k = 149.99'
p = 1.31'

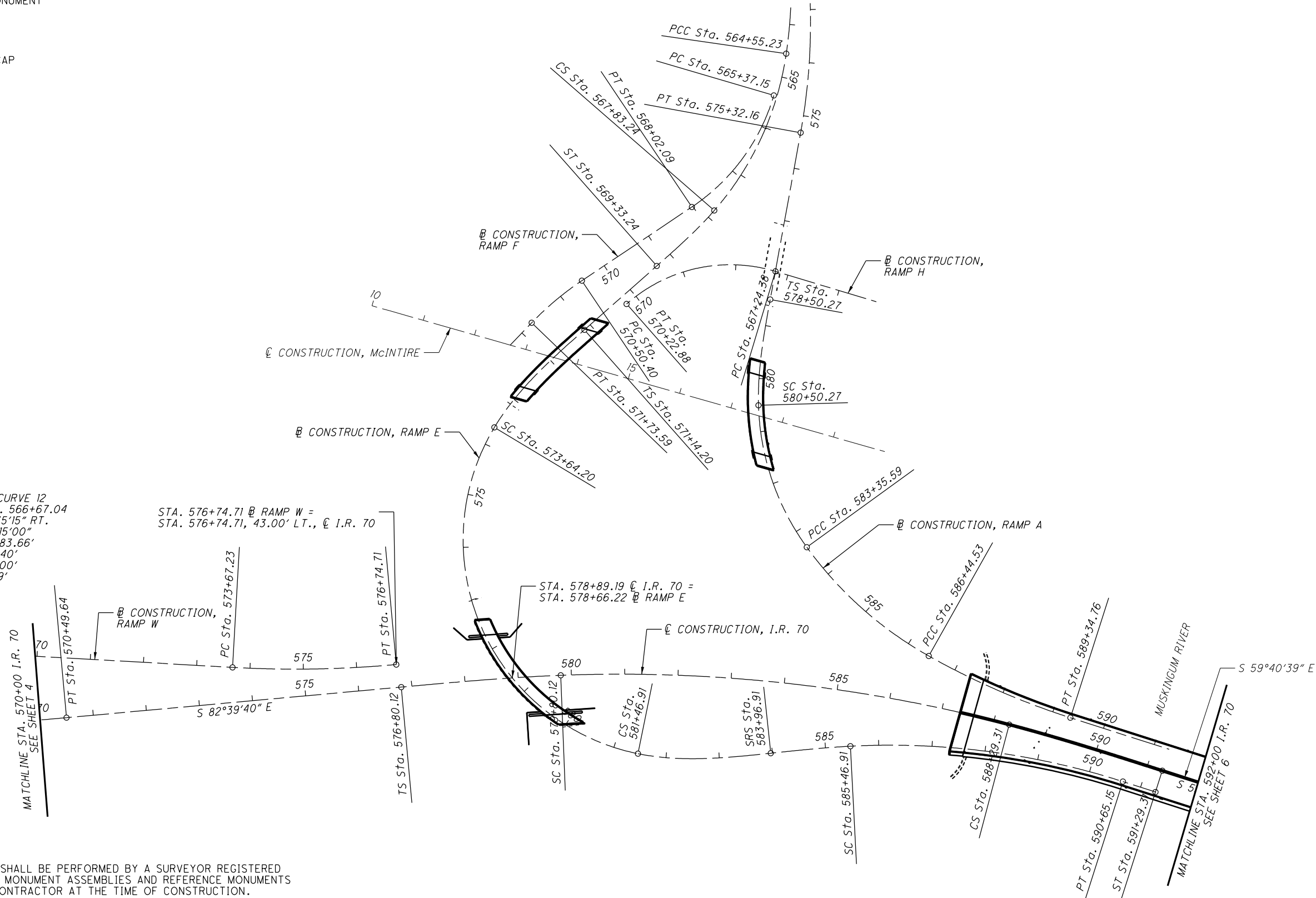
I.R. 70 CURVE 13
P.I. STA. 584+07.85
D = 16°59'01" RT.
Dc = 02°00'00"
R = 2,864.79'
T = 427.73'
L = 849.18'
E = 31.75'

I.R. 70 SPIRAL 8
P.I. STA. 589+29.33
Ls = 300.00'
fs = 03°00'00"
LT = 200.03'
ST = 100.03'
x = 299.92'
y = 5.23'
k = 149.99'
p = 1.31'

I.R. 70 SPIRAL 9
P.I. STA. 594+73.32
Ls = 200.00'
fs = 02°00'00"
LT = 133.34'
ST = 66.67'
x = 199.98'
y = 2.33'
k = 100.00'
p = 0.58'

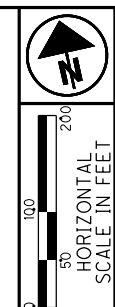
SETTING OF ALL MONUMENTS SHALL BE PERFORMED BY A SURVEYOR REGISTERED IN THE STATE OF OHIO. THE MONUMENT ASSEMBLIES AND REFERENCE MONUMENTS WILL BE INSTALLED BY THE CONTRACTOR AT THE TIME OF CONSTRUCTION. THE IRON PIN AND CAP (WHEN REQUIRED) ARE TO BE INSTALLED BY THE CONTRACTOR'S SURVEYOR.

CHANGES OR ALTERATIONS TO THE LOCATION OF ANY MONUMENTS SHOWN IN THIS TABLE, REQUIRE PRIOR APPROVAL FROM THE DISTRICT REAL ESTATE ADMINISTRATOR OF THE OHIO DEPARTMENT OF TRANSPORTATION. IN THE EVENT THAT CHANGES OR ALTERATIONS ARE APPROVED, A REVISED CENTERLINE PLAT WITH THE NEW LOCATIONS SHALL BE RECORDED IN THE APPLICABLE COUNTY RECORDS AND THE OHIO DEPARTMENT OF TRANSPORTATION. SPECIFICATIONS FOR MONUMENT ASSEMBLIES, REFERENCE MONUMENTS AND RIGHT OF WAY MONUMENTS ARE SHOWN ON STANDARD CONSTRUCTION DRAWING RM-1.1.



I:\ProjectData\MUS\93006\400-Engineering\RW\Sheets\93006-RP004.dgn Sheet 10/26/2020 3:10:02 PM cshoenak

MUSKINGUM COUNTY
CITY OF ZANESVILLE

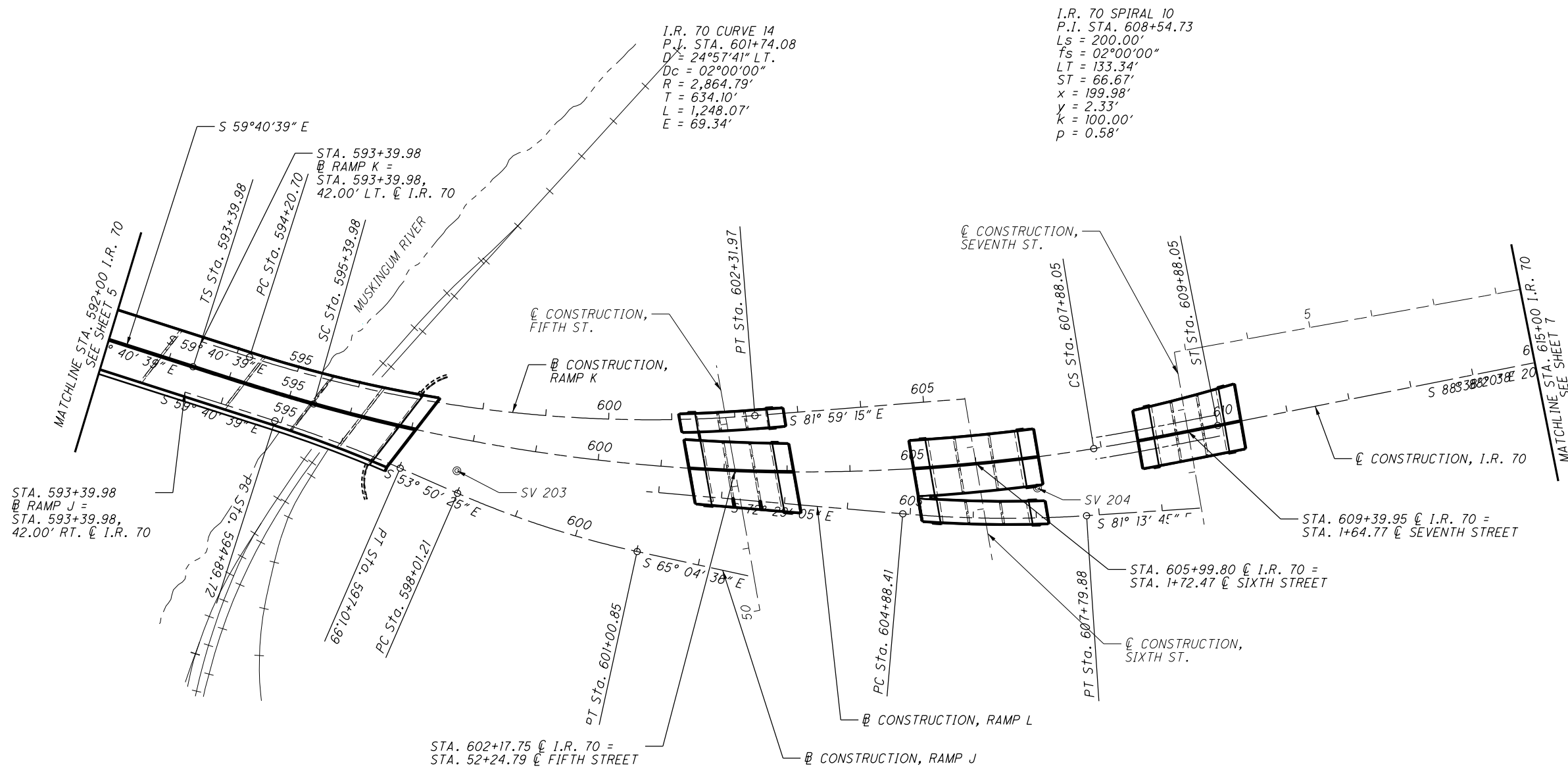
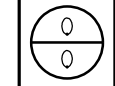


PID NO. **93006**
R/W DESIGNER CS
R/W REVIEWER LW

CENTERLINE PLAT
STA. 592+00 TO STA. 615+00 I.R. 70

MUS-70-10.49

6 / 17



I.R. 70 CURVE 14
P.I. STA. 601+74.08
D = 24°57'41" LT.
Dc = 02°00'00"
R = 2,864.79'
T = 634.10'
L = 1,248.07'
E = 69.34'

I.R. 70 SPIRAL 10
P.I. STA. 608+54.73
Ls = 200.00'
fs = 02°00'00"
LT = 133.34'
ST = 66.67'
x = 199.98'
y = 2.33'
k = 100.00'
p = 0.58'

MONUMENT LEGEND

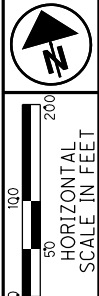
- ☐ EXISTING R/W MONUMENT BOX
- ▣ PROPOSED R/W MONUMENT BOX
- ⊙ EXISTING CONCRETE MONUMENT
- PROPOSED CONCRETE MONUMENT
- ⚡ RAILROAD SPIKE FOUND
- ⚡ RAILROAD SPIKE SET
- I.P.F. IRON PIN FOUND
- ⊙ I.P.F. IRON PIN FOUND W/ ID CAP
- I.P.S. IRON PIN SET W/ ID CAP
- ⊙ I.P.F. IRON PIPE FOUND
- ⊙ I.P.S. IRON PIPE SET
- ⊙ P.K.F. P.K. NAIL FOUND
- ⊙ P.K.S. P.K. NAIL SET

SETTING OF ALL MONUMENTS SHALL BE PERFORMED BY A SURVEYOR REGISTERED IN THE STATE OF OHIO. THE MONUMENT ASSEMBLIES AND REFERENCE MONUMENTS WILL BE INSTALLED BY THE CONTRACTOR AT THE TIME OF CONSTRUCTION. THE IRON PIN AND CAP (WHEN REQUIRED) ARE TO BE INSTALLED BY THE CONTRACTOR'S SURVEYOR.

CHANGES OR ALTERATIONS TO THE LOCATION OF ANY MONUMENTS SHOWN IN THIS TABLE, REQUIRE PRIOR APPROVAL FROM THE DISTRICT REAL ESTATE ADMINISTRATOR OF THE OHIO DEPARTMENT OF TRANSPORTATION. IN THE EVENT THAT CHANGES OR ALTERATIONS ARE APPROVED, A REVISED CENTERLINE PLAT WITH THE NEW LOCATIONS SHALL BE RECORDED IN THE APPLICABLE COUNTY RECORDS AND THE OHIO DEPARTMENT OF TRANSPORTATION. SPECIFICATIONS FOR MONUMENT ASSEMBLIES, REFERENCE MONUMENTS AND RIGHT OF WAY MONUMENTS ARE SHOWN ON STANDARD CONSTRUCTION DRAWING RM-1.1.

I:\ProjectData\MUS\93006\400-Engineering\RW\Sheets\93006-RP005.dgn Sheet 10/26/2020 3:14:44 PM cshoemak

MUSKINGUM COUNTY
CITY OF ZANESVILLE

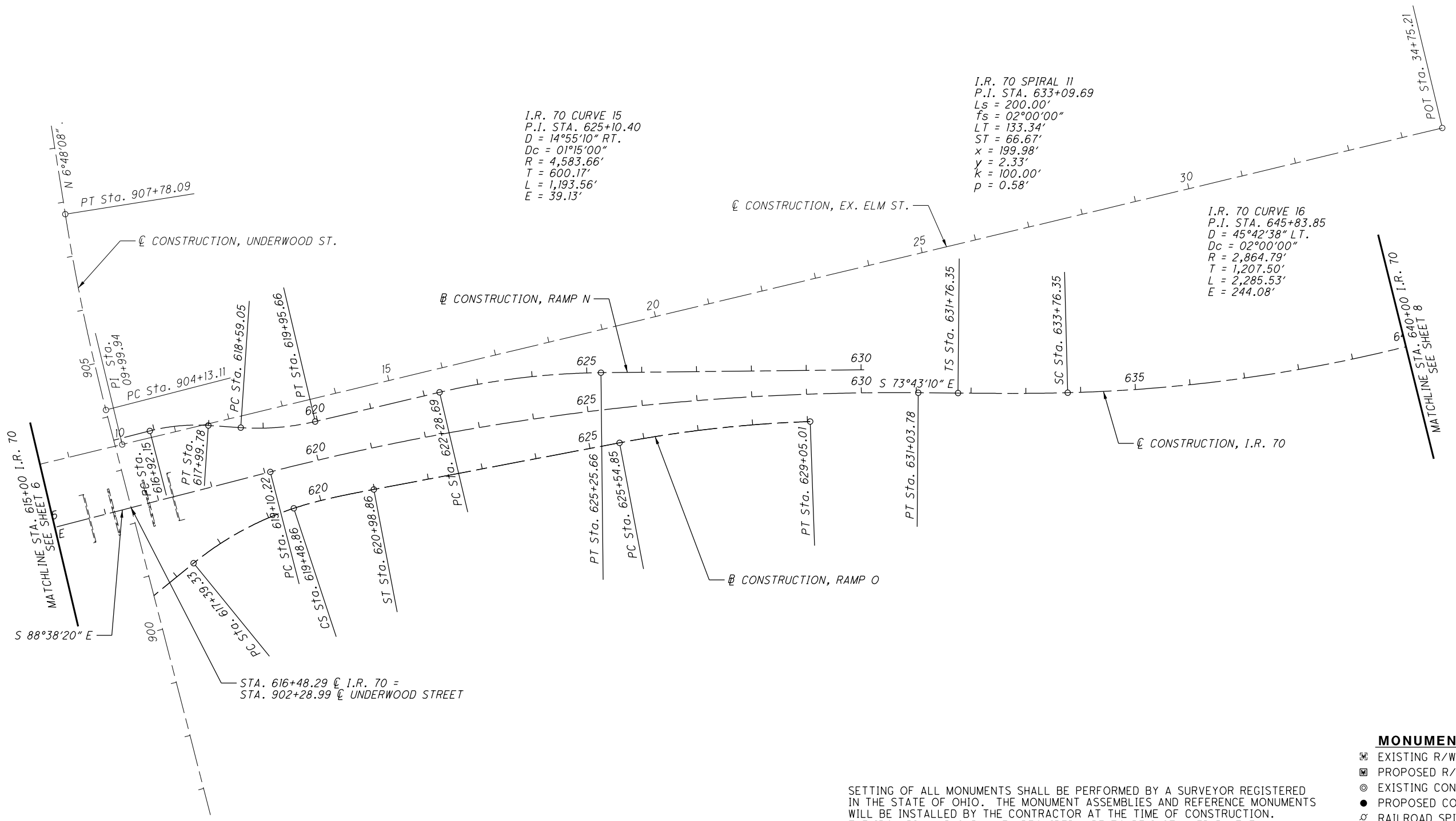


PID NO. **93006**
R/W DESIGNER CS
R/W REVIEWER LW

CENTERLINE PLAT
STA. 615+00 TO STA. 640+00 I.R. 70

MUS-70-10.49

7 / 17



I.R. 70 CURVE 15
P.I. STA. 625+10.40
D = 14°55'10" RT.
Dc = 01°15'00"
R = 4,583.66'
T = 600.17'
L = 1,193.56'
E = 39.13'

I.R. 70 SPIRAL II
P.I. STA. 633+09.69
Ls = 200.00'
Ts = 02°00'00"
LT = 133.34'
ST = 66.67'
x = 199.98'
y = 2.33'
k = 100.00'
p = 0.58'

I.R. 70 CURVE 16
P.I. STA. 645+83.85
D = 45°42'38" LT.
Dc = 02°00'00"
R = 2,864.79'
T = 1,207.50'
L = 2,285.53'
E = 244.08'

SETTING OF ALL MONUMENTS SHALL BE PERFORMED BY A SURVEYOR REGISTERED IN THE STATE OF OHIO. THE MONUMENT ASSEMBLIES AND REFERENCE MONUMENTS WILL BE INSTALLED BY THE CONTRACTOR AT THE TIME OF CONSTRUCTION. THE IRON PIN AND CAP (WHEN REQUIRED) ARE TO BE INSTALLED BY THE CONTRACTOR'S SURVEYOR.

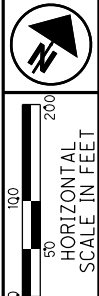
CHANGES OR ALTERATIONS TO THE LOCATION OF ANY MONUMENTS SHOWN IN THIS TABLE, REQUIRE PRIOR APPROVAL FROM THE DISTRICT REAL ESTATE ADMINISTRATOR OF THE OHIO DEPARTMENT OF TRANSPORTATION. IN THE EVENT THAT CHANGES OR ALTERATIONS ARE APPROVED, A REVISED CENTERLINE PLAT WITH THE NEW LOCATIONS SHALL BE RECORDED IN THE APPLICABLE COUNTY RECORDS AND THE OHIO DEPARTMENT OF TRANSPORTATION. SPECIFICATIONS FOR MONUMENT ASSEMBLIES, REFERENCE MONUMENTS AND RIGHT OF WAY MONUMENTS ARE SHOWN ON STANDARD CONSTRUCTION DRAWING RM-1.1.

MONUMENT LEGEND

- ◻ EXISTING R/W MONUMENT BOX
- ▣ PROPOSED R/W MONUMENT BOX
- ⊙ EXISTING CONCRETE MONUMENT
- PROPOSED CONCRETE MONUMENT
- ♣ RAILROAD SPIKE FOUND
- ♠ RAILROAD SPIKE SET
- I.R.F. IRON PIN FOUND
- ⊙ I.R.F. IRON PIN FOUND W/ ID CAP
- I.R.S. IRON PIN SET W/ ID CAP
- ⊙ R.F. IRON PIPE FOUND
- ⊙ R.S. IRON PIPE SET
- ⊙ R.K.F. P.K. NAIL FOUND
- ⊙ R.K.S. P.K. NAIL SET

I:\ProjectData\MUS\93006\400-Engineering\RW\Sheets\93006-RP006.dgn Sheet 10/26/2020 3:16:19 PM cshoemak

MUSKINGUM COUNTY
CITY OF ZANESVILLE



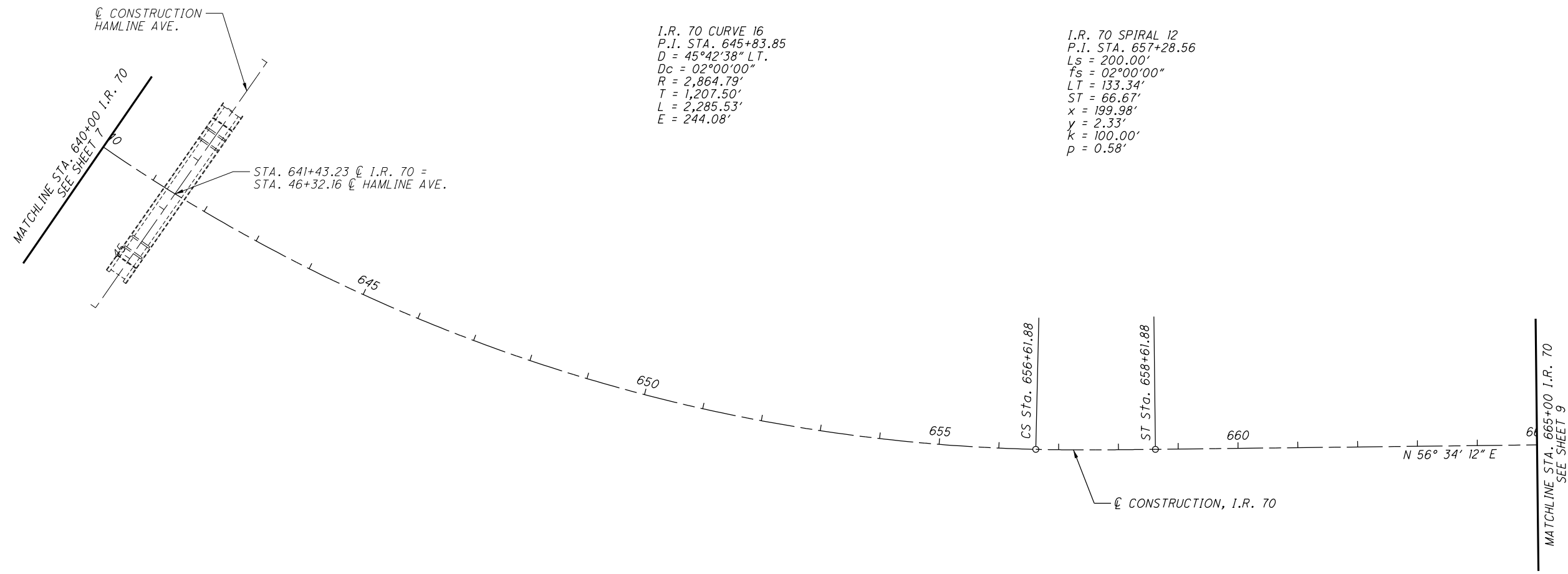
PID NO.
93006

R/W DESIGNER
CS
R/W REVIEWER
LW

CENTERLINE PLAT
STA. 640+00 TO STA. 665+00 I.R. 70

MUS-70-10.49

8 / 17



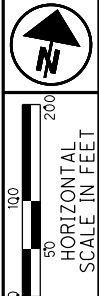
SETTING OF ALL MONUMENTS SHALL BE PERFORMED BY A SURVEYOR REGISTERED IN THE STATE OF OHIO. THE MONUMENT ASSEMBLIES AND REFERENCE MONUMENTS WILL BE INSTALLED BY THE CONTRACTOR AT THE TIME OF CONSTRUCTION. THE IRON PIN AND CAP (WHEN REQUIRED) ARE TO BE INSTALLED BY THE CONTRACTOR'S SURVEYOR.

CHANGES OR ALTERATIONS TO THE LOCATION OF ANY MONUMENTS SHOWN IN THIS TABLE, REQUIRE PRIOR APPROVAL FROM THE DISTRICT REAL ESTATE ADMINISTRATOR OF THE OHIO DEPARTMENT OF TRANSPORTATION. IN THE EVENT THAT CHANGES OR ALTERATIONS ARE APPROVED, A REVISED CENTERLINE PLAT WITH THE NEW LOCATIONS SHALL BE RECORDED IN THE APPLICABLE COUNTY RECORDS AND THE OHIO DEPARTMENT OF TRANSPORTATION. SPECIFICATIONS FOR MONUMENT ASSEMBLIES, REFERENCE MONUMENTS AND RIGHT OF WAY MONUMENTS ARE SHOWN ON STANDARD CONSTRUCTION DRAWING RM-1.1.

- MONUMENT LEGEND**
- ◻ EXISTING R/W MONUMENT BOX
 - ▣ PROPOSED R/W MONUMENT BOX
 - ⊙ EXISTING CONCRETE MONUMENT
 - PROPOSED CONCRETE MONUMENT
 - ♣ RAILROAD SPIKE FOUND
 - ♠ RAILROAD SPIKE SET
 - I.R.F. IRON PIN FOUND
 - ⊙ I.R.F. IRON PIN FOUND W/ ID CAP
 - I.R.S. IRON PIN SET W/ ID CAP
 - ⊙ R.F. IRON PIPE FOUND
 - ⊙ R.S. IRON PIPE SET
 - ⊙ R.K.F. P.K. NAIL FOUND
 - ⊙ R.K.S. P.K. NAIL SET

I:\ProjectData\MUS\93006\400-Engineering\RW\Sheets\93006-RP007.dgn Sheet 10/26/2020 3:17:24 PM cshoemak

MUSKINGUM COUNTY
 CITY OF ZANESVILLE
 WASHINGTON TOWNSHIP
 QTR. TWP. 3, T1N, R7W, U.S.M.L.



PID NO.
93006

R/W DESIGNER
 CS
 R/W REVIEWER
 LW

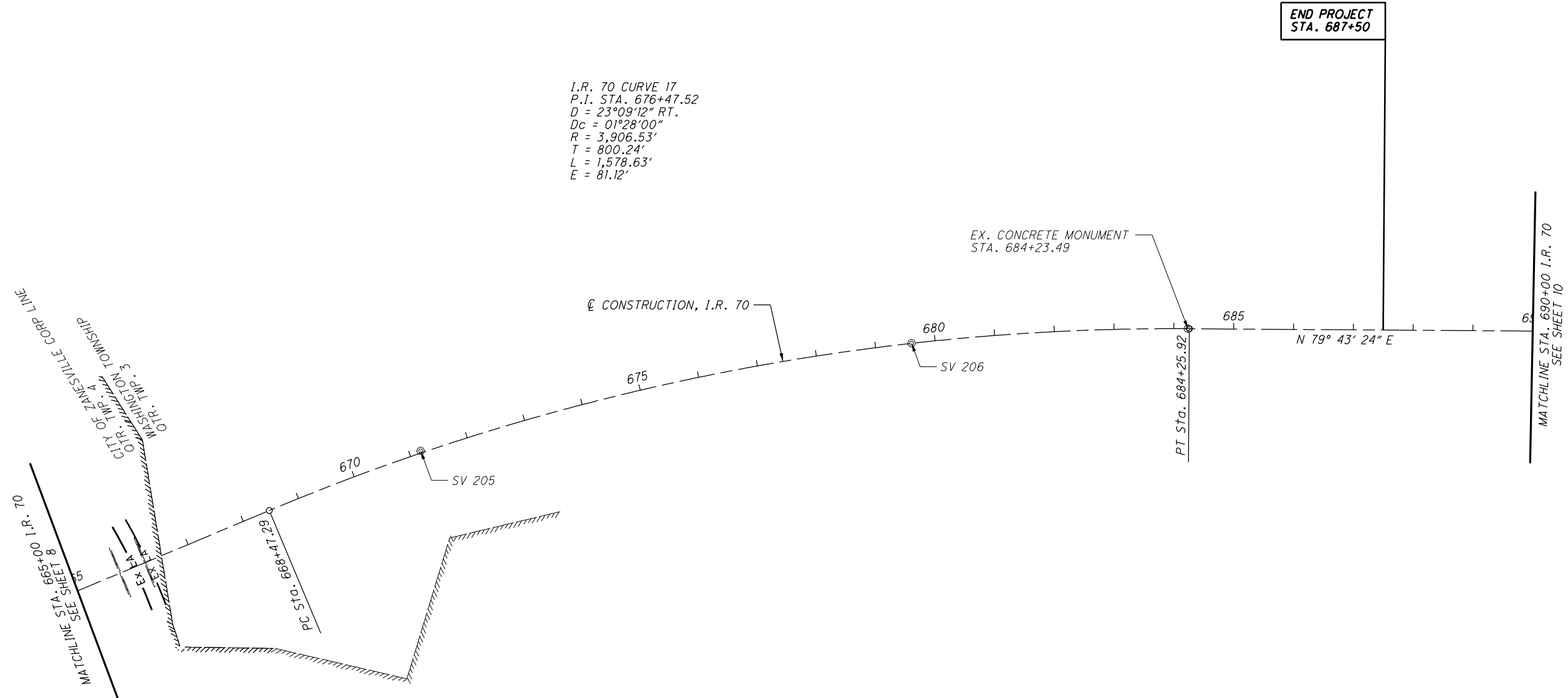
CENTERLINE PLAT
STA. 665+00 TO STA. 690+00 I.R. 70

MUS-70-10.49

9 / 17



I.R. 70 CURVE 17
 P.I. STA. 676+47.52
 D = 23°09'12" RT.
 Dc = 01°28'00"
 R = 3,906.53'
 T = 800.24'
 L = 1,578.63'
 E = 81.12'



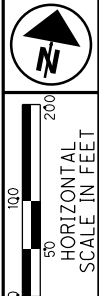
SETTING OF ALL MONUMENTS SHALL BE PERFORMED BY A SURVEYOR REGISTERED IN THE STATE OF OHIO. THE MONUMENT ASSEMBLIES AND REFERENCE MONUMENTS WILL BE INSTALLED BY THE CONTRACTOR AT THE TIME OF CONSTRUCTION. THE IRON PIN AND CAP (WHEN REQUIRED) ARE TO BE INSTALLED BY THE CONTRACTOR'S SURVEYOR.

CHANGES OR ALTERATIONS TO THE LOCATION OF ANY MONUMENTS SHOWN IN THIS TABLE, REQUIRE PRIOR APPROVAL FROM THE DISTRICT REAL ESTATE ADMINISTRATOR OF THE OHIO DEPARTMENT OF TRANSPORTATION. IN THE EVENT THAT CHANGES OR ALTERATIONS ARE APPROVED, A REVISED CENTERLINE PLAT WITH THE NEW LOCATIONS SHALL BE RECORDED IN THE APPLICABLE COUNTY RECORDS AND THE OHIO DEPARTMENT OF TRANSPORTATION. SPECIFICATIONS FOR MONUMENT ASSEMBLIES, REFERENCE MONUMENTS AND RIGHT OF WAY MONUMENTS ARE SHOWN ON STANDARD CONSTRUCTION DRAWING RM-1.1.

- MONUMENT LEGEND**
- ◻ EXISTING R/W MONUMENT BOX
 - ▣ PROPOSED R/W MONUMENT BOX
 - ⊙ EXISTING CONCRETE MONUMENT
 - PROPOSED CONCRETE MONUMENT
 - ♣ RAILROAD SPIKE FOUND
 - ♠ RAILROAD SPIKE SET
 - I.R.F. IRON PIN FOUND
 - ⊙ I.R.F. IRON PIN FOUND W/ ID CAP
 - I.R.S. IRON PIN SET W/ ID CAP
 - ⊙ R.F. IRON PIPE FOUND
 - ⊙ R.S. IRON PIPE SET
 - ⊙ R.K.F. P.K. NAIL FOUND
 - ⊙ R.K.S. P.K. NAIL SET

I:\ProjectData\MUS\93006\400-Engineering\RW\Sheets\93006-RP008.dgn Sheet 10/26/2020 3:21:34 PM cshoemak

MUSKINGUM COUNTY
WASHINGTON TOWNSHIP
QTR. TWP. 3, T1N, R7W, U.S.M.L.



PID NO.
93006

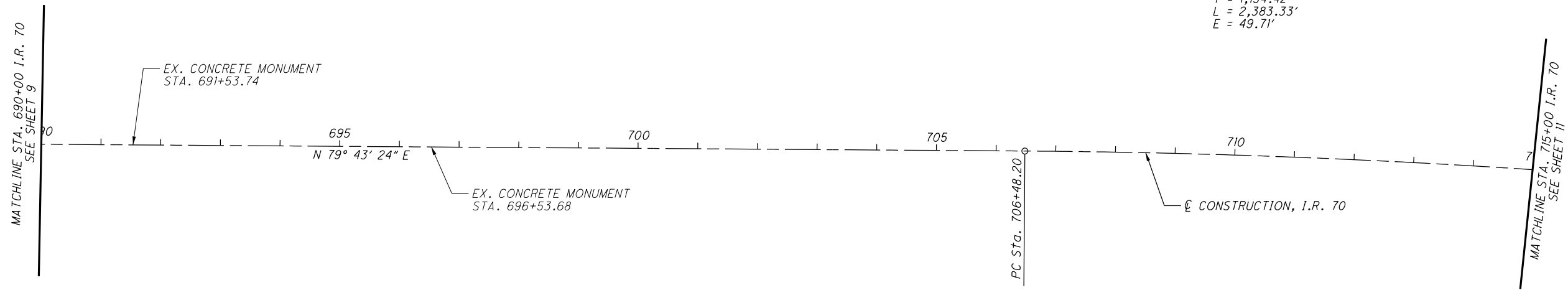
R/W DESIGNER
CS
R/W REVIEWER
LW

CENTERLINE PLAT
STA. 690+00 TO STA. 715+00 I.R. 70

MUS-70-10.49

10 / 17

I:\ProjectData\MUS\93006\400-Engineering\RW\Sheets\93006-RP009.dgn Sheet 10/26/2020 3:42:16 PM cshoemak



I.R. 70 CURVE 18
P.I. STA. 718+42.63
D = 09°32'00" RT.
Dc = 00°24'00"
R = 14,323.92'
T = 1,194.42'
L = 2,383.33'
E = 49.71'

SETTING OF ALL MONUMENTS SHALL BE PERFORMED BY A SURVEYOR REGISTERED IN THE STATE OF OHIO. THE MONUMENT ASSEMBLIES AND REFERENCE MONUMENTS WILL BE INSTALLED BY THE CONTRACTOR AT THE TIME OF CONSTRUCTION. THE IRON PIN AND CAP (WHEN REQUIRED) ARE TO BE INSTALLED BY THE CONTRACTOR'S SURVEYOR.

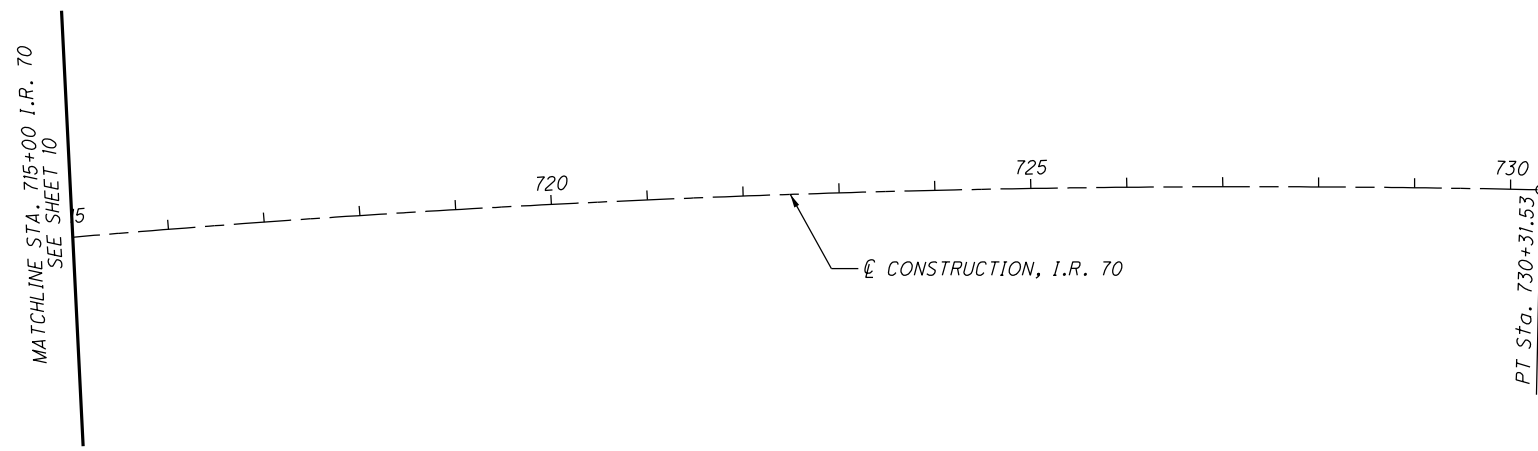
CHANGES OR ALTERATIONS TO THE LOCATION OF ANY MONUMENTS SHOWN IN THIS TABLE, REQUIRE PRIOR APPROVAL FROM THE DISTRICT REAL ESTATE ADMINISTRATOR OF THE OHIO DEPARTMENT OF TRANSPORTATION. IN THE EVENT THAT CHANGES OR ALTERATIONS ARE APPROVED, A REVISED CENTERLINE PLAT WITH THE NEW LOCATIONS SHALL BE RECORDED IN THE APPLICABLE COUNTY RECORDS AND THE OHIO DEPARTMENT OF TRANSPORTATION. SPECIFICATIONS FOR MONUMENT ASSEMBLIES, REFERENCE MONUMENTS AND RIGHT OF WAY MONUMENTS ARE SHOWN ON STANDARD CONSTRUCTION DRAWING RM-1.1.

MONUMENT LEGEND

- ▣ EXISTING R/W MONUMENT BOX
- ▣ PROPOSED R/W MONUMENT BOX
- ⊙ EXISTING CONCRETE MONUMENT
- PROPOSED CONCRETE MONUMENT
- ♣ RAILROAD SPIKE FOUND
- ♣ RAILROAD SPIKE SET
- I.R.F. IRON PIN FOUND
- ⊙ I.R.F. IRON PIN FOUND W/ ID CAP
- I.R.S. IRON PIN SET W/ ID CAP
- ⊙ R.F. IRON PIPE FOUND
- ⊙ R.S. IRON PIPE SET
- ⊙ R.K.F. P.K. NAIL FOUND
- R.K.S. P.K. NAIL SET

MUSKINGUM COUNTY
WASHINGTON TOWNSHIP
QTR. TWP. 3, T1N, R7W, U.S.M.L.

I.R. 70 CURVE 18
P.I. STA. 718+42.63
D = 09°32'00" RT.
Dc = 00°24'00"
R = 14,323.92'
T = 1,194.42'
L = 2,383.33'
E = 49.71'



SETTING OF ALL MONUMENTS SHALL BE PERFORMED BY A SURVEYOR REGISTERED IN THE STATE OF OHIO. THE MONUMENT ASSEMBLIES AND REFERENCE MONUMENTS WILL BE INSTALLED BY THE CONTRACTOR AT THE TIME OF CONSTRUCTION. THE IRON PIN AND CAP (WHEN REQUIRED) ARE TO BE INSTALLED BY THE CONTRACTOR'S SURVEYOR.

CHANGES OR ALTERATIONS TO THE LOCATION OF ANY MONUMENTS SHOWN IN THIS TABLE, REQUIRE PRIOR APPROVAL FROM THE DISTRICT REAL ESTATE ADMINISTRATOR OF THE OHIO DEPARTMENT OF TRANSPORTATION. IN THE EVENT THAT CHANGES OR ALTERATIONS ARE APPROVED, A REVISED CENTERLINE PLAT WITH THE NEW LOCATIONS SHALL BE RECORDED IN THE APPLICABLE COUNTY RECORDS AND THE OHIO DEPARTMENT OF TRANSPORTATION. SPECIFICATIONS FOR MONUMENT ASSEMBLIES, REFERENCE MONUMENTS AND RIGHT OF WAY MONUMENTS ARE SHOWN ON STANDARD CONSTRUCTION DRAWING RM-1.1.

MONUMENT LEGEND

- ☐ EXISTING R/W MONUMENT BOX
- ▣ PROPOSED R/W MONUMENT BOX
- ⊙ EXISTING CONCRETE MONUMENT
- PROPOSED CONCRETE MONUMENT
- ♣ RAILROAD SPIKE FOUND
- ♠ RAILROAD SPIKE SET
- I.R.F. IRON PIN FOUND
- ⊙ I.R.F. IRON PIN FOUND W/ ID CAP
- I.R.S. IRON PIN SET W/ ID CAP
- ⊙ R.F. IRON PIPE FOUND
- ⊙ R.S. IRON PIPE SET
- ⊙ R.K.F. P.K. NAIL FOUND
- ⊙ R.K.S. P.K. NAIL SET



PID NO.
93006

R/W DESIGNER	CS
R/W REVIEWER	LW

CENTERLINE PLAT
STA. 715+00 TO STA. 730+31.53 I.R. 70

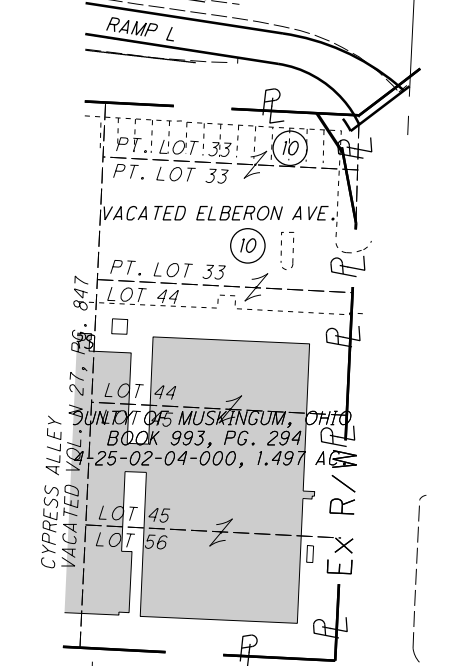
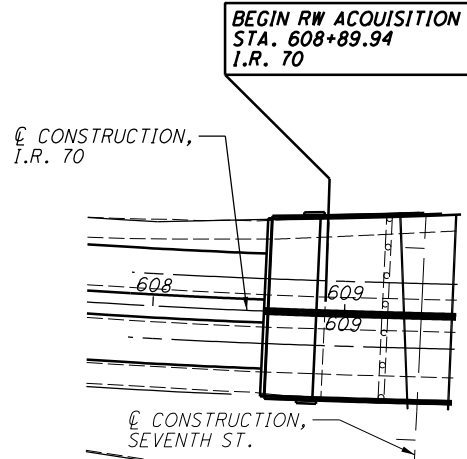
MUS-70-10.49

11 / 17



I:\ProjectData\MUS\93006\400-Engineering\RW\Sheets\93006-RP010.dgn Sheet 10/27/2020 4:14:45 PM cshoemdk

MUSKINGUM COUNTY
CITY OF ZANESVILLE

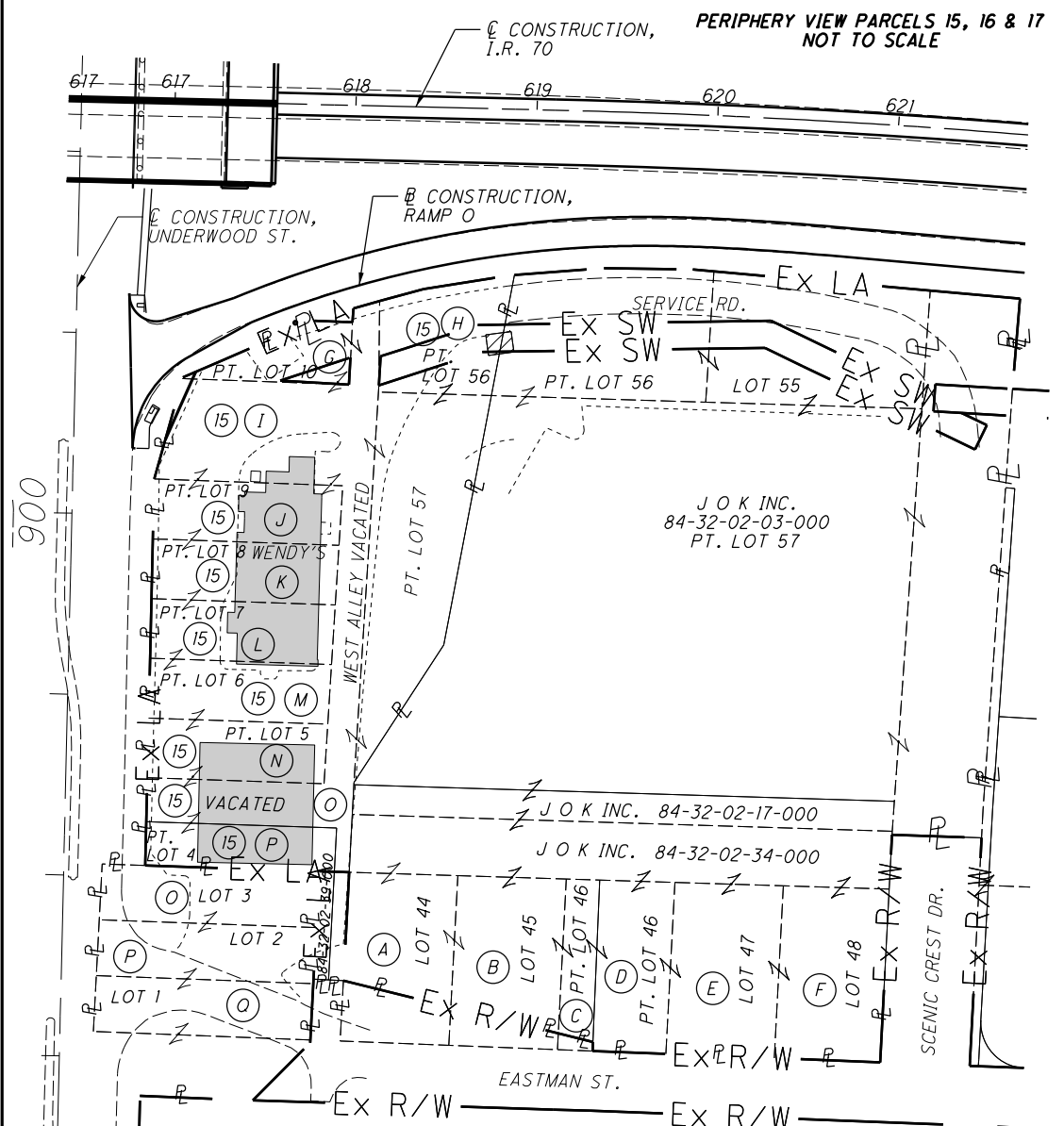


COUNTY OF MUSKINGUM AND
BOARD OF COUNTY COMMISSIONERS
OF MUSKINGUM COUNTY, OHIO
84-25-02-04-000

PLAT OF NORTHERN ADDITION
TO THE CITY OF ZANESVILLE
PB. 1 PG. 131

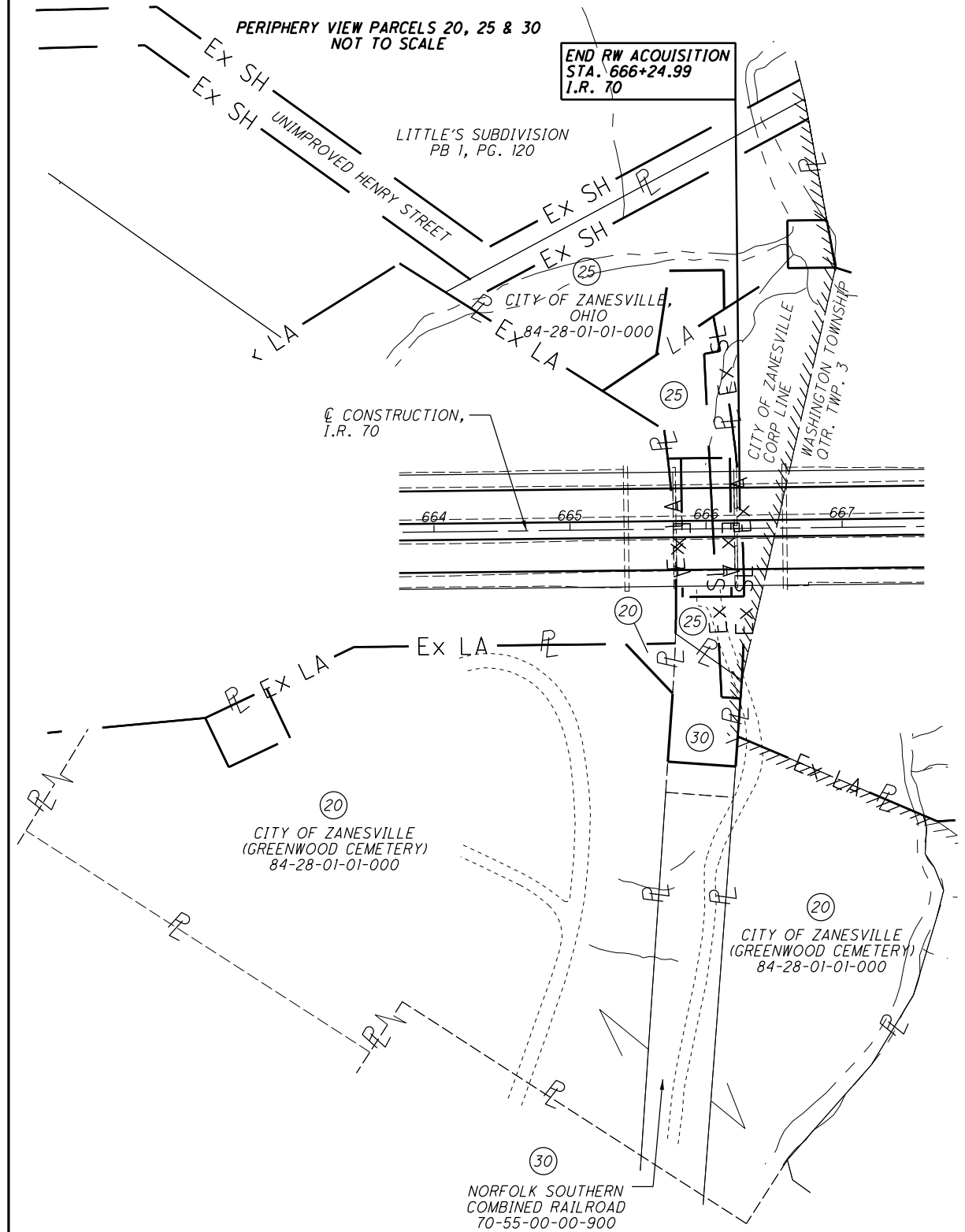
PERIPHERY VIEW PARCEL 10
NOT TO SCALE

MUSKINGUM COUNTY
CITY OF ZANESVILLE



- (G) UNDERWOOD LIMITED PARTNERSHIP
84-32-02-10-000
LOT 10 RATHBONE'S NE ADDITION
- (H) UNDERWOOD LIMITED PARTNERSHIP
84-32-02-10-000
PT. LOT 56 RATHBONE'S NE ADDITION
- (I) UNDERWOOD LIMITED PARTNERSHIP
84-32-02-10-000
CENTER ST. 56' WIDE
- (J) UNDERWOOD LIMITED PARTNERSHIP
84-32-02-10-000
LOT 9 RATHBONE'S NE ADDITION
- (K) UNDERWOOD LIMITED PARTNERSHIP
84-32-02-10-000
LOT 8 RATHBONE'S NE ADDITION
- (L) UNDERWOOD LIMITED PARTNERSHIP
84-32-02-10-000
LOT 7 RATHBONE'S NE ADDITION
- (M) UNDERWOOD LIMITED PARTNERSHIP
84-32-02-10-000
LOT 6 RATHBONE'S NE ADDITION
- (N) UNDERWOOD LIMITED PARTNERSHIP
84-32-02-10-000
LOT 5 RATHBONE'S NE ADDITION
- (O) UNDERWOOD LIMITED PARTNERSHIP
84-32-02-10-000
VACATED EATON ST.
- (P) UNDERWOOD LIMITED PARTNERSHIP
84-32-02-10-000
LOT 4 RATHBONE'S NE ADDITION
- (A) J O K INC.
84-32-02-11-000
LOT 44 DOWNER'S SUBDIVISION
- (B) J O K INC.
84-32-02-12-000
LOT 45 DOWNER'S SUBDIVISION
- (C) J O K INC.
84-32-02-13-000
PT. LOT 46 DOWNER'S SUBDIVISION
- (D) J O K INC.
84-32-02-14-000
PT. LOT 46 DOWNER'S SUBDIVISION
- (E) J O K INC.
84-32-02-15-000
LOT 47 DOWNER'S SUBDIVISION
- (F) J O K INC.
84-32-02-16-000
LOT 48 DOWNER'S SUBDIVISION

MUSKINGUM COUNTY
CITY OF ZANESVILLE
WASHINGTON TOWNSHIP, QTR. TWP. 3, T1N, R7W, U.S.M.L.



STRUCTURE KEY

[White Box]	RESIDENTIAL
[Grey Box]	COMMERCIAL
[Hatched Box]	OUT-BUILDING

REV. BY	DATE	DESCRIPTION
CS	10/27/20	REVISED PB1 TO RP1 FOR RATHBONE'S NE ADDITION DELETED PARCELS 15-SS, 16-SS, 17-1 & 17-2
FIELD REVIEW BY: LUKE & CANDY		
OWNERSHIP VERIFIED BY: LW		
DATE COMPLETED: 3/19/2020		

PROPERTY MAP

MUS-70-10.49

PID NO. 93006

R/W DESIGNER CS
R/W REVIEWER LW

12 / 17

I:\ProjectData\MUS\93006\400-Engineering\RW\Sheets\93006-RM001.dgn Sheet 10/27/2020 4:18:44 PM cshoemdk

TOTAL NUMBER OF :

4 OWNERSHIPS 0 TOTAL TAKES
 6 PARCELS 0 OWNERSHIPS W/ STRUCTURES INVOLVED

RECORD AREA - TOTAL PRO - NET TAKE = NET RESIDUE

ALL AREAS IN ACRES

GRANTEE:

ALL RIGHT OF WAY ACQUIRED IN THE NAME OF THE STATE OF OHIO UNLESS OTHERWISE SHOWN.

* DENOTES RIGHT OF WAY ENCROACHMENT
 ** SURVEYED AREA

PARCEL NO.	OWNER	OWNERS RECORD	AUDITOR'S PARCEL	RECORD AREA	TOTAL P.R.O.	GROSS TAKE	P.R.O. IN TAKE	NET TAKE	STRUC-TURE	NET RESIDUE		TYPE FUND	REMARKS	AS ACQUIRED	
										LEFT	RIGHT			BOOK	PAGE
1-9	NOT USED											STATE			
10-SHV	COUNTY OF MUSKINGUM AND BOARD OF COUNTY COMMISSIONERS OF MUSKINGUM COUNTY, OHIO	BOOK 993, PG. 294 & BOOK 1051, PG. 224	84-25-02-04-000	1.497	0.000	0.002	0.000	0.002	NO		1.495		PURCHASED IN THE NAME OF CITY OF ZANESVILLE; LOT 33; *ENCROACHING LANDSCAPING; ONE PARKING SPACE IN TAKE AREA		
11-14	NOT USED														
15-LA	UNDERWOOD LIMITED PARTNERSHIP	BOOK 1112, PG. 488	84-32-02-10-000	1.03	0.000	0.002	0.000	0.002	NO		0.984		*ENCROACHING PRIVATE SIGN & LANDSCAPING		
16-19	NOT USED														
20-LA	CITY OF ZANESVILLE (GREENWOOD CEMETERY)	BOOK 66, PG. 619	84-28-01-01-000	59	0.000	0.015	0.000	0.015	NO		58.803		BRIDGE REMOVAL		
21-24	NOT USED														
25-LA 25-T	CITY OF ZANESVILLE, OHIO	BOOK 66, PG. 619	84-28-01-01-000			0.297 0.045	0.115 0.000	0.182 0.045	NO NO				BRIDGE REMOVAL, ACCESS RETAINED BY UNIMPROVED HENRY STREET; PRO FROM MUS-40-11.78 PARCEL 403 TO CONSTRUCT SANITARY LINES		
26-29	NOT USED														
30-LA	NORFOLK SOUTHERN COMBINED RAILROAD	BOOK 98, PG. 193 AND VOL. 1013, PG. 5	70-55-00-00-900	0.93	0.000	0.091	0.000	0.091	NO		0.839	STATE			

FEDERAL PROJECT NO. **E180746**
 PID NO. **93006**
 STATE JOB NO. **0000**
 R/W DESIGNER CS
 R/W REVIEWER LW
SUMMARY OF ADDITIONAL RIGHT OF WAY
MUS-70-10.49

NOTE: UNDER NO CIRCUMSTANCES ARE TEMPORARY EASEMENTS TO BE USED FOR STAORAGE OF MATERIAL OR EQUIPMENT BY THE CONTRACTOR UNLESS NOTED OTHERWISE.

NOTE: ALL TEMPORARY PARCELS TO BE OF 66 MONTH DURATION.

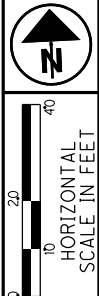
LEGEND:

- LA = LIMITED ACCESS EASEMENT
- SH = STANDARD HIGHWAY EASEMENT
- SL = SLOPE EASEMENT
- T = TEMPORARY EASEMENT
- CH = CHANNEL EASEMENT

CS	10/27/20	DELETED PARCELS 15-SS, 16-SS, 17-1 & 17-2	13 / 17
REV. BY	DATE	DESCRIPTION	
		FIELD REVIEW BY: LW / CS	
		OWNERSHIP VERIFIED BY: LW	
		DATE COMPLETED: 3/19/2020	

I:\ProjectData\MUS\93006\400-Engineering\RW\Sheets\93006-RS001.dgn Sheet 10/27/2020 4:07:04 PM cshoemak

MUSKINGUM COUNTY
CITY OF ZANESVILLE



PID NO. **93006**
R/W DESIGNER CS
R/W REVIEWER LW

RIGHT OF WAY DETAIL SHEET
PARCEL 10 AT SEVENTH ST.

MUS-70-10.49

14 / 17
0
0

BEGIN PROJECT
STA. 530+50
I.R. 70

BEGIN RW ACQUISITION
STA. 608+89.94
I.R. 70

STRUCTURE KEY

- RESIDENTIAL
- COMMERCIAL
- OUT-BUILDING

MONUMENT LEGEND

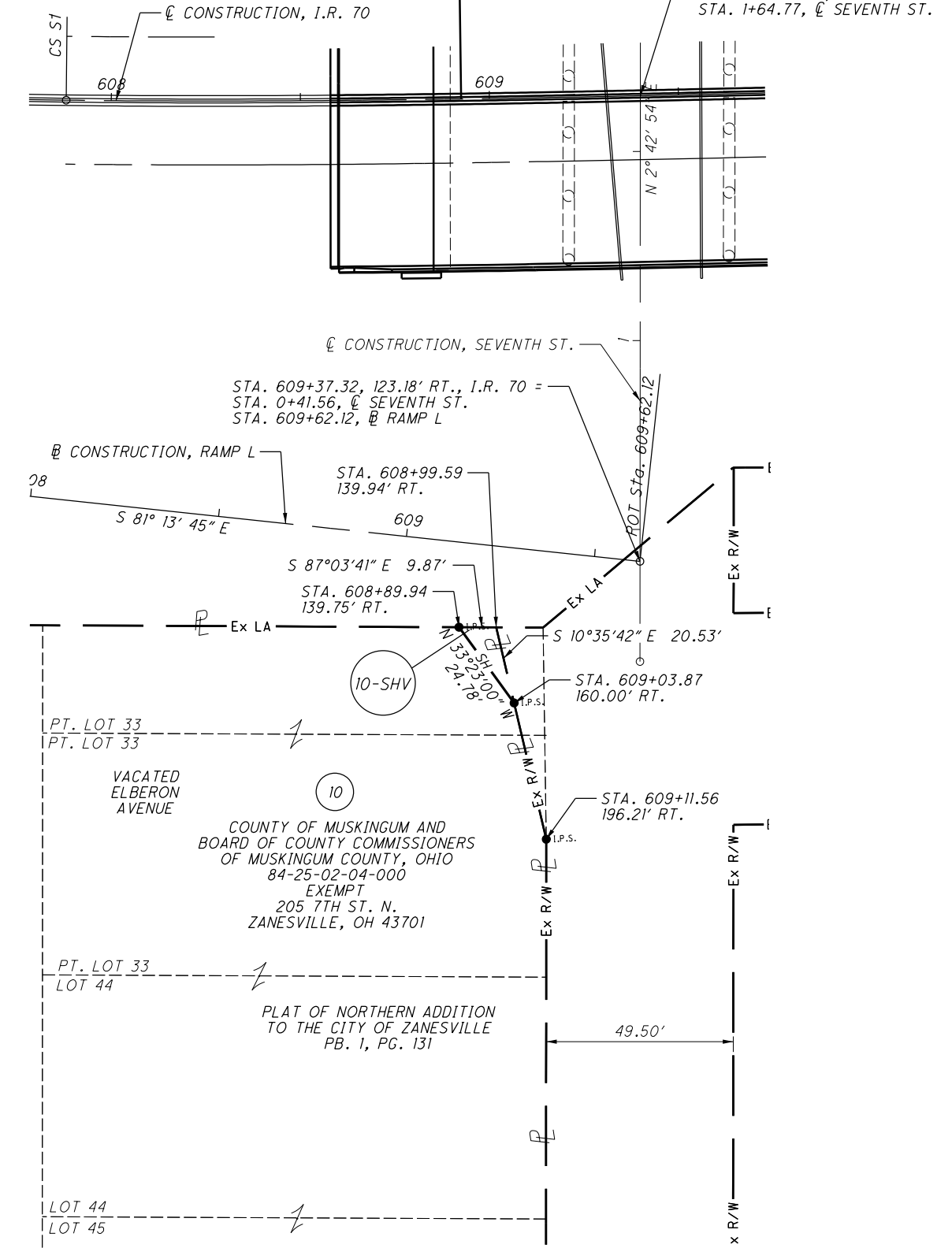
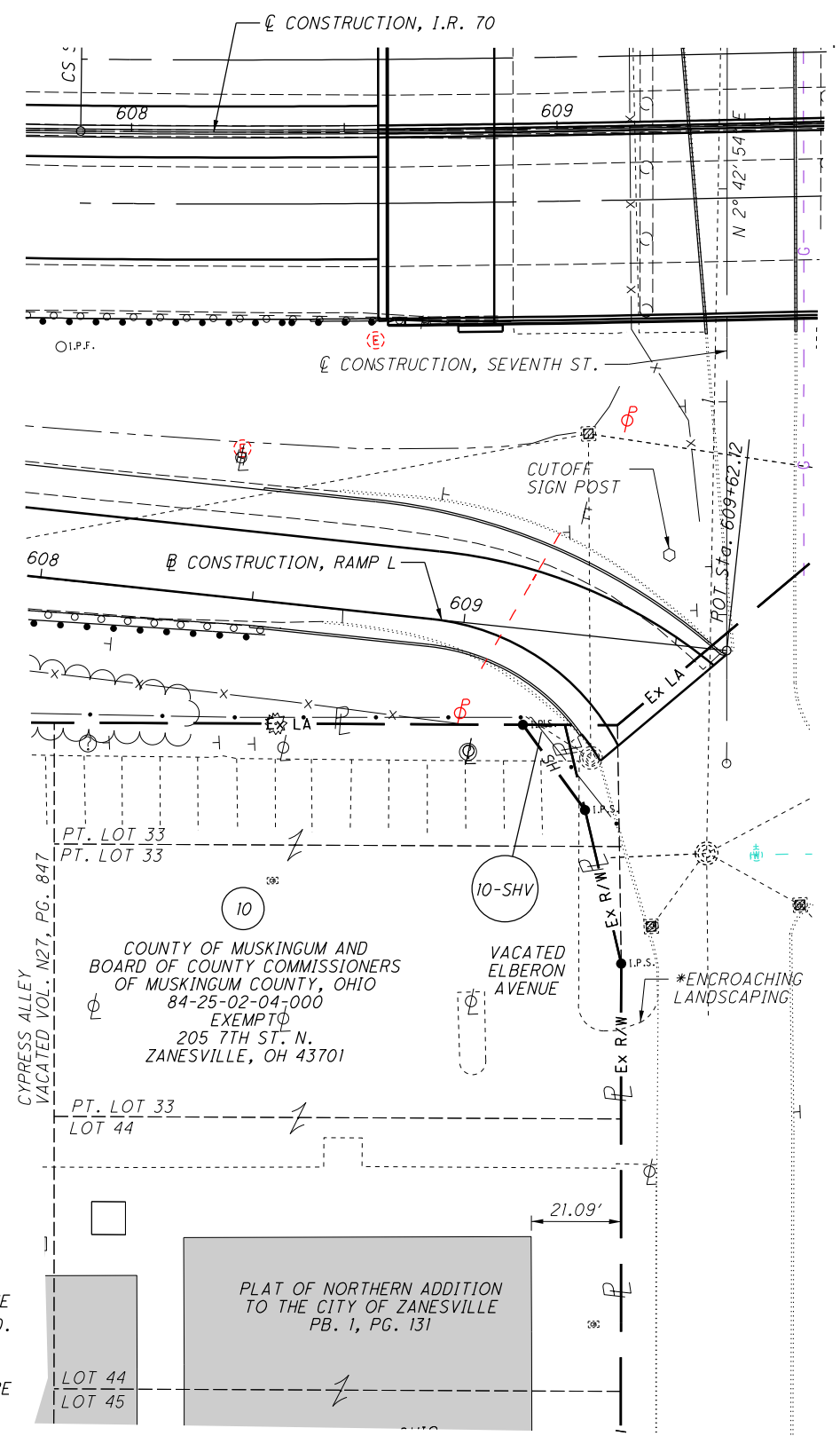
- EXISTING R/W MONUMENT BOX
- PROPOSED R/W MONUMENT BOX
- EXISTING CONCRETE MONUMENT
- PROPOSED CONCRETE MONUMENT
- RAILROAD SPIKE FOUND
- RAILROAD SPIKE SET
- I.P.F. IRON PIN FOUND
- I.P.F. IRON PIN FOUND W/ ID CAP
- I.P.S. IRON PIN SET W/ ID CAP
- I.P.S. IRON PIPE FOUND
- I.P.S. IRON PIPE SET
- P.K.F. P.K. NAIL FOUND
- P.K.S. P.K. NAIL SET

NOTES:
ALL EXISTING FENCE LOCATED INSIDE OF PROPOSED RIGHT OF WAY IS TO BE REMOVED. THE DISPOSITION OF EXISTING CONSTRUCTION ITEMS WITHIN WORK LIMITS ARE SHOWN ON THE CONSTRUCTION PLANS.

NOTE:
ALL STATIONS AND OFFSETS ARE FROM THE CENTERLINE OF CONSTRUCTION, I.R. 70 UNLESS OTHERWISE STATED.

NOTE:
THE EXISTING RIGHT OF WAY WIDTH AND LOCATION WERE DETERMINED USING DOCUMENTATION ON FILE FROM THE OHIO DEPARTMENT OF TRANSPORTATION, DISTRICT 5 OFFICE, JACKSONTOWN, OHIO.

DEDICATED CITY STREETS AND ALLY WIDTHS DETERMINED BY PLATS REFERENCED AND ARE ON FILE AT MUSKINGUM COUNTY RECORDER'S OFFICE.



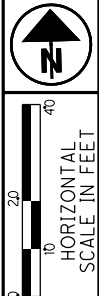
REV	DATE	DESCRIPTION
COMPLETION DATE: 3/19/2020		

I:\ProjectData\MUS\93006\400-Engineering\RW\Sheets\93006-RD000.DGN Sheet 10/21/2020 11:39:11 AM cshoemak

MUSKINGUM COUNTY CITY OF ZANESVILLE

STRUCTURE KEY

- RESIDENTIAL
- COMMERCIAL
- OUT-BUILDING



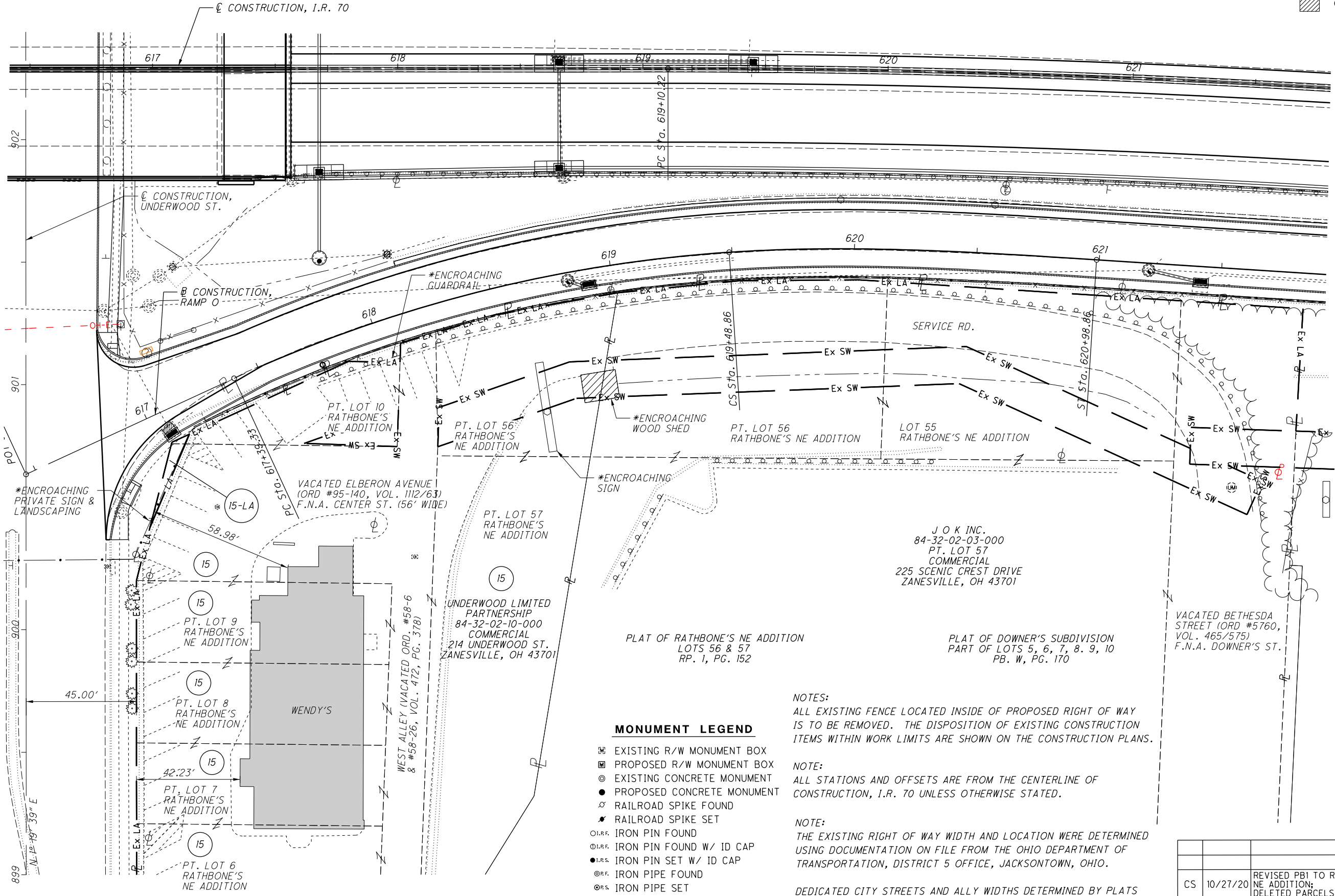
PID NO. **93006**

R/W DESIGNER CS
R/W REVIEWER LW

**RIGHT OF WAY TOPO SHEET
PARCELS 15&16 AT UNDERWOOD ST**

MUS-70-10.49

15 / 17



MONUMENT LEGEND

- EXISTING R/W MONUMENT BOX
- PROPOSED R/W MONUMENT BOX
- EXISTING CONCRETE MONUMENT
- PROPOSED CONCRETE MONUMENT
- RAILROAD SPIKE FOUND
- RAILROAD SPIKE SET
- I.R.P.F. IRON PIN FOUND
- I.R.P.F. IRON PIN FOUND W/ ID CAP
- I.R.P.S. IRON PIN SET W/ ID CAP
- I.R.P.F. IRON PIPE FOUND
- I.R.P.S. IRON PIPE SET
- P.K.F. P.K. NAIL FOUND
- P.K.S. P.K. NAIL SET

NOTES:
ALL EXISTING FENCE LOCATED INSIDE OF PROPOSED RIGHT OF WAY IS TO BE REMOVED. THE DISPOSITION OF EXISTING CONSTRUCTION ITEMS WITHIN WORK LIMITS ARE SHOWN ON THE CONSTRUCTION PLANS.

NOTE:
ALL STATIONS AND OFFSETS ARE FROM THE CENTERLINE OF CONSTRUCTION, I.R. 70 UNLESS OTHERWISE STATED.

NOTE:
THE EXISTING RIGHT OF WAY WIDTH AND LOCATION WERE DETERMINED USING DOCUMENTATION ON FILE FROM THE OHIO DEPARTMENT OF TRANSPORTATION, DISTRICT 5 OFFICE, JACKSONTOWN, OHIO.

DEDICATED CITY STREETS AND ALLY WIDTHS DETERMINED BY PLATS REFERENCED AND ARE ON FILE AT MUSKINGUM COUNTY RECORDER'S OFFICE.

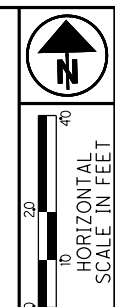
REV	DATE	DESCRIPTION
CS	10/27/20	REVISED PB1 TO RP1 FOR RATHBONE'S NE ADDITION; DELETED PARCELS 15-SS & 16-SS
COMPLETION DATE: 3/19/2020		

I:\ProjectData\MUS\93006\400-Engineering\RW\Sheets\93006-RD002.DGN Sheet 10/28/2020 4:09:45 PM cshoemck

MUSKINGUM COUNTY CITY OF ZANESVILLE

STRUCTURE KEY

- RESIDENTIAL
- COMMERCIAL
- OUT-BUILDING



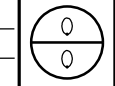
PID NO.
93006

R/W DESIGNER
CS
R/W REVIEWER
LW

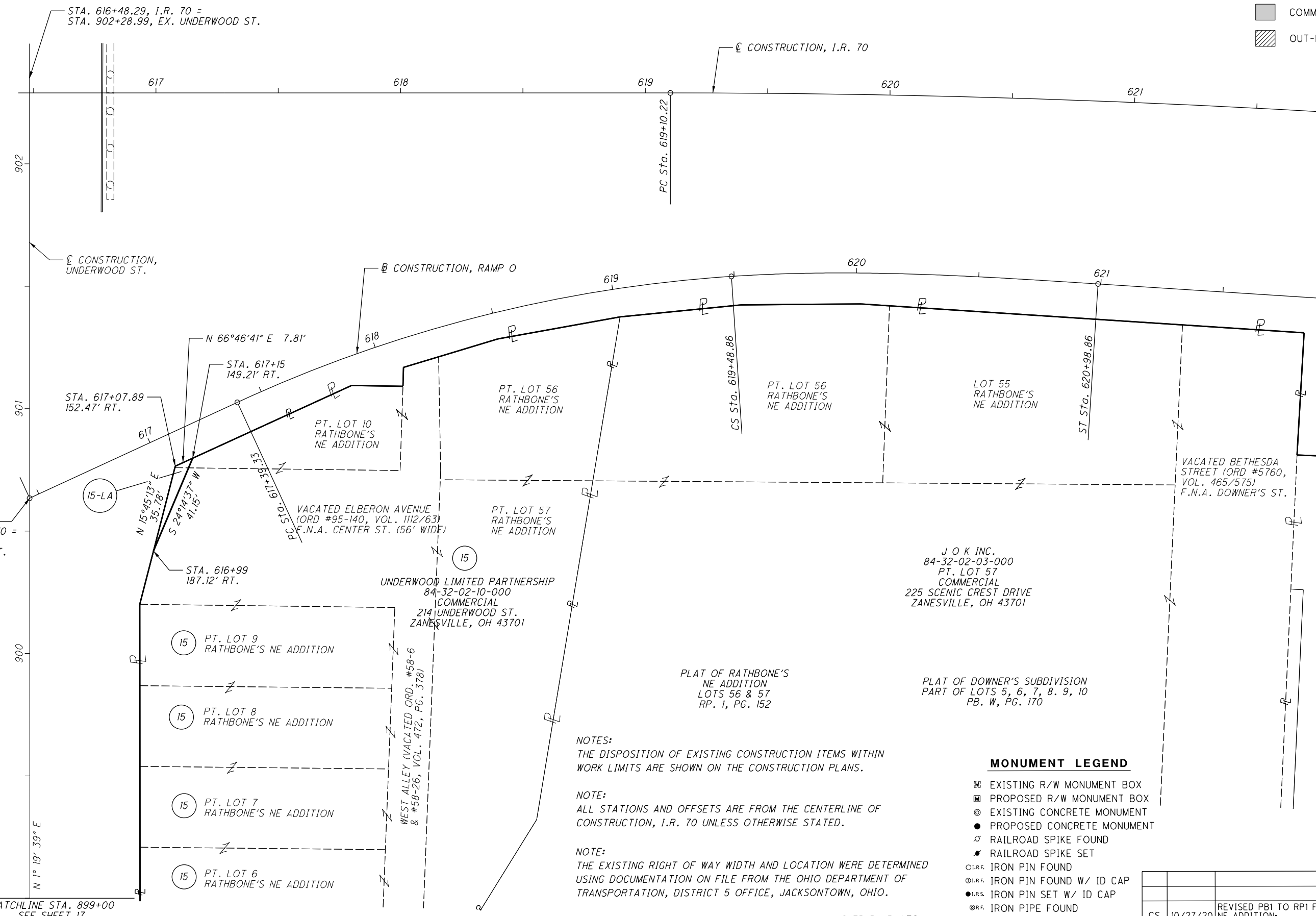
RIGHT OF WAY BOUNDARY SHEET
PARCELS 15&16 AT UNDERWOOD ST

MUS-70-10.49

16 / 17



I:\ProjectData\MUS\93006\400-Engineering\RW\Sheets\93006-RD003.DGN Sheet 10/30/2020 11:35:25 AM cshoenak



STA. 616+48.38
165.58' RT, I.R. 70 =
STA. 900+63.41,
☉ UNDERWOOD ST.
STA. 616+45.84
⊠ RAMP O

STA. 617+07.89
152.47' RT.

STA. 617+15
149.21' RT.

STA. 616+99
187.12' RT.

☉ CONSTRUCTION, I.R. 70

☉ CONSTRUCTION,
UNDERWOOD ST.

⊠ CONSTRUCTION, RAMP O

VACATED ELBERON AVENUE
(ORD #95-140, VOL. 1112/63)
F.N.A. CENTER ST. (56' WIDE)

UNDERWOOD LIMITED PARTNERSHIP
84-32-02-10-000
COMMERCIAL
214 UNDERWOOD ST.
ZANESVILLE, OH 43701

PLAT OF RATHBONE'S
NE ADDITION
LOTS 56 & 57
RP. 1, PG. 152

J O K INC.
84-32-02-03-000
PT. LOT 57
COMMERCIAL
225 SCENIC CREST DRIVE
ZANESVILLE, OH 43701

PLAT OF DOWNER'S SUBDIVISION
PART OF LOTS 5, 6, 7, 8, 9, 10
PB. W, PG. 170

NOTES:
THE DISPOSITION OF EXISTING CONSTRUCTION ITEMS WITHIN
WORK LIMITS ARE SHOWN ON THE CONSTRUCTION PLANS.

NOTE:
ALL STATIONS AND OFFSETS ARE FROM THE CENTERLINE OF
CONSTRUCTION, I.R. 70 UNLESS OTHERWISE STATED.

NOTE:
THE EXISTING RIGHT OF WAY WIDTH AND LOCATION WERE DETERMINED
USING DOCUMENTATION ON FILE FROM THE OHIO DEPARTMENT OF
TRANSPORTATION, DISTRICT 5 OFFICE, JACKSONTOWN, OHIO.

DEDICATED CITY STREETS AND ALLY WIDTHS DETERMINED BY PLATS
REFERENCED AND ARE ON FILE AT MUSKINGUM COUNTY RECORDER'S
OFFICE.

MONUMENT LEGEND

- EXISTING R/W MONUMENT BOX
- PROPOSED R/W MONUMENT BOX
- ⊙ EXISTING CONCRETE MONUMENT
- PROPOSED CONCRETE MONUMENT
- ⚡ RAILROAD SPIKE FOUND
- ⚡ RAILROAD SPIKE SET
- I.R.F. IRON PIN FOUND
- DI.R.F. IRON PIN FOUND W/ ID CAP
- I.R.S. IRON PIN SET W/ ID CAP
- R.F. IRON PIPE FOUND
- R.S. IRON PIPE SET
- P.K.F. P.K. NAIL FOUND
- P.K.S. P.K. NAIL SET

REV	DATE	DESCRIPTION
CS	10/27/20	REVISED PB1 TO RP1 FOR RATHBONE'S NE ADDITION; DELETED PARCELS 15-SS & 16-SS
COMPLETION DATE: 3/19/2020		

**MUSKINGUM COUNTY
CITY OF ZANESVILLE
WASHINGTON TOWNSHIP,
QTR. TWP. 3, T1N, R7W, U.S.M.L.**

NOTES:
ALL EXISTING FENCE LOCATED INSIDE OF PROPOSED RIGHT OF WAY IS TO BE REMOVED. THE DISPOSITION OF EXISTING CONSTRUCTION ITEMS WITHIN WORK LIMITS ARE SHOWN ON THE CONSTRUCTION PLANS.

NOTE:
ALL STATIONS AND OFFSETS ARE FROM THE CENTERLINE OF CONSTRUCTION, I.R. 70 UNLESS OTHERWISE STATED.

NOTE:
THE EXISTING RIGHT OF WAY WIDTH AND LOCATION WERE DETERMINED USING DOCUMENTATION ON FILE FROM THE OHIO DEPARTMENT OF TRANSPORTATION, DISTRICT 5 OFFICE, JACKSONTOWN, OHIO.

DEDICATED CITY STREETS AND ALL WIDTHS DETERMINED BY PLATS REFERENCED AND ARE ON FILE AT MUSKINGUM COUNTY RECORDER'S OFFICE.

RR VALUATION REFERENCED ON ORIGINAL CONSTRUCTION PLANS MUS-40-11.78.






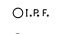
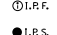
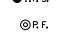
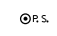

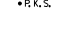


RR STATIONING NORTH TO SOUTH, TRACKS HAD BEEN REMOVED PRIOR TO I-70 ORIGINAL CONSTRUCTION IN 1960 RR BRIDGE NO. 1.68 USED FOR THAT PLANS STATIONING.

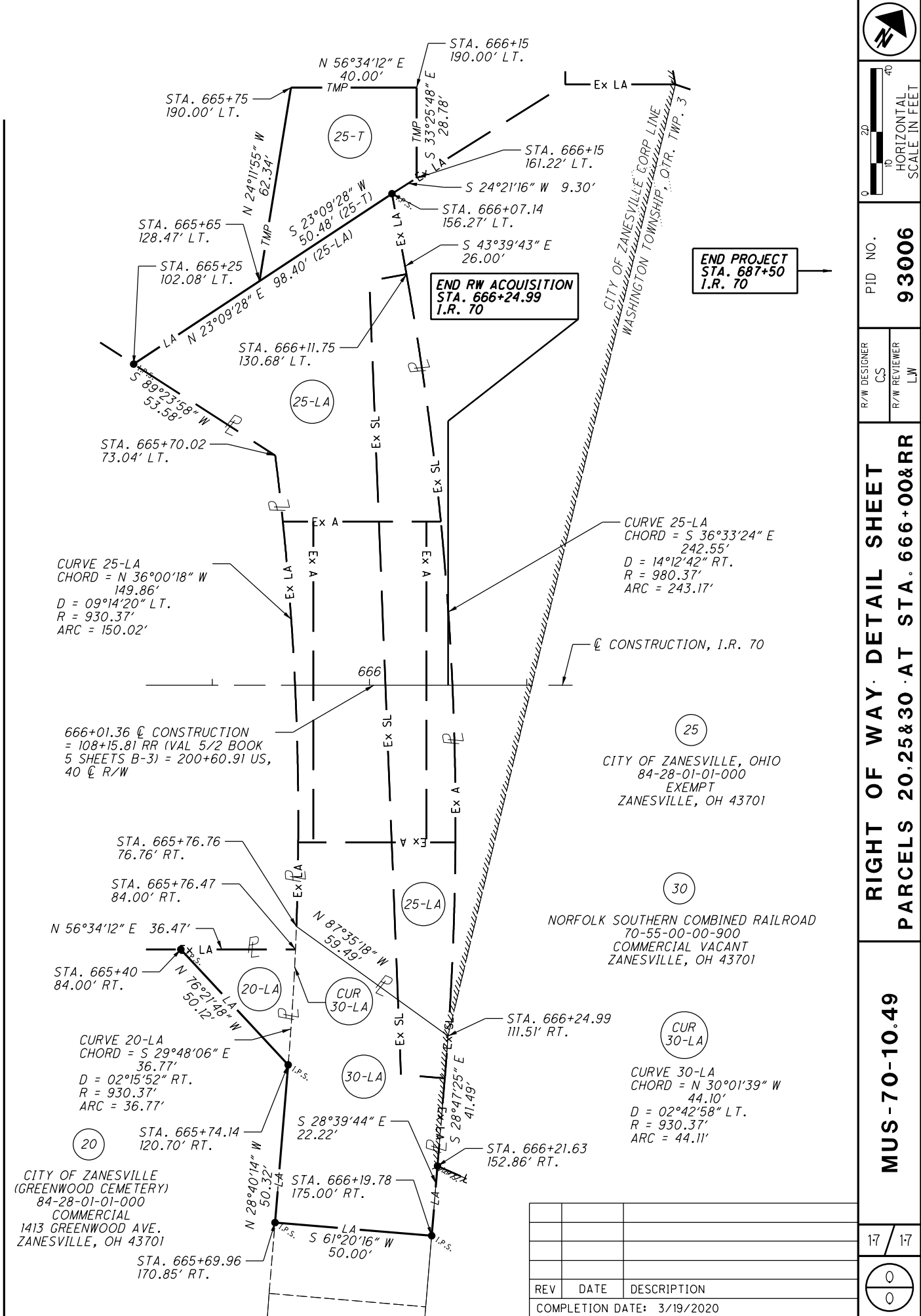
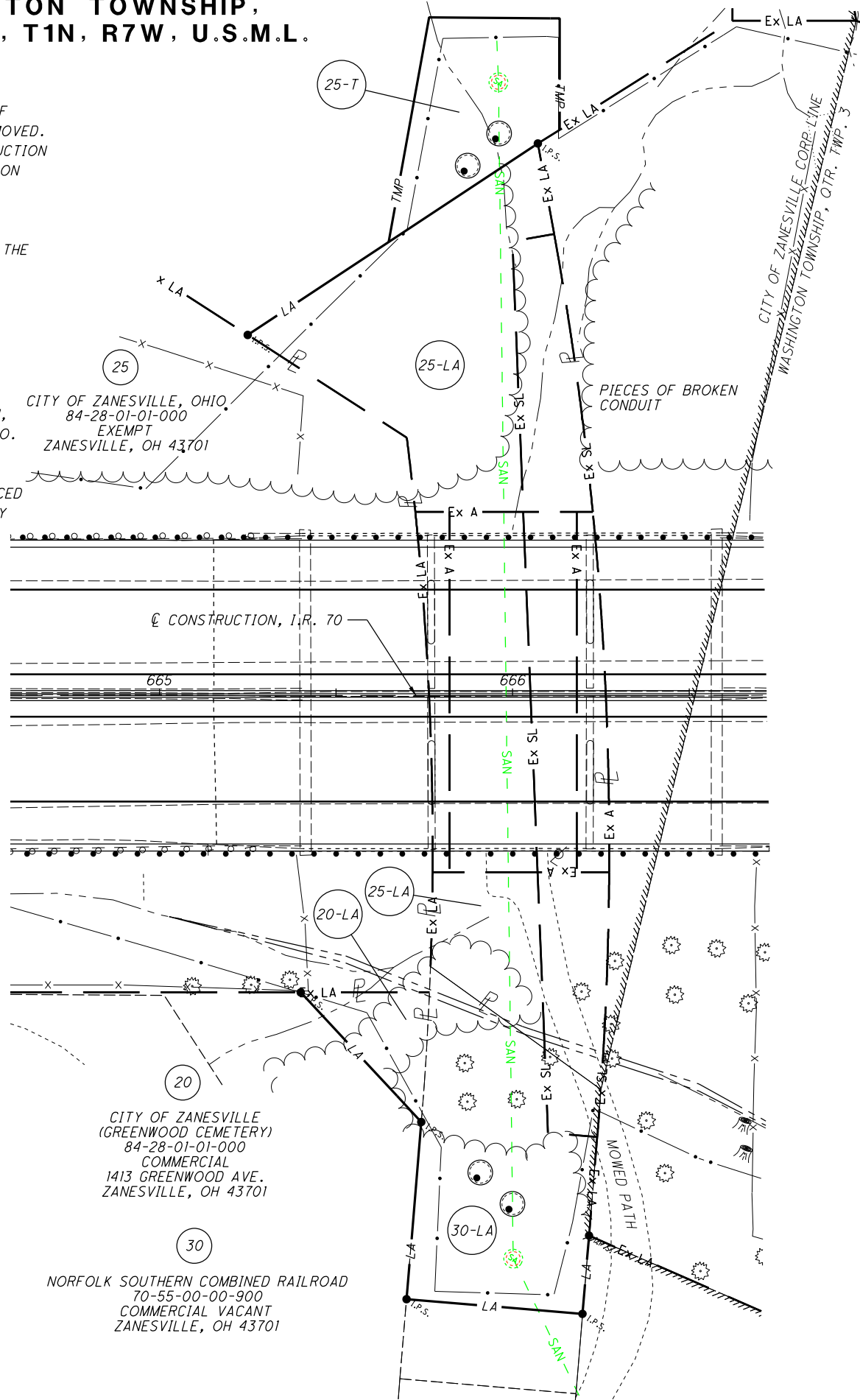
NO RR MILE POSTS FOUND WITH THIS SURVEY.

STRUCTURE KEY

-  RESIDENTIAL
-  COMMERCIAL
-  OUT-BUILDING

MONUMENT LEGEND

-  EXISTING R/W MONUMENT BOX
-  PROPOSED R/W MONUMENT BOX
-  EXISTING CONCRETE MONUMENT
-  PROPOSED CONCRETE MONUMENT
-  RAILROAD SPIKE FOUND
-  RAILROAD SPIKE SET
-  IRON PIN FOUND
-  IRON PIN FOUND W/ ID CAP
-  IRON PIN SET W/ ID CAP
-  IRON PIPE FOUND
-  IRON PIPE SET
-  P.K. NAIL FOUND
-  P.K. NAIL SET



I:\ProjectData\MUS\93006\400-Engineering\RW\Sheets\93006-RD004.DGN Sheet 10/27/2020 11:46:04 AM csnoemak





R/W DESIGNER	CS
R/W REVIEWER	LW

PID NO.	93006
---------	--------------

MUS-70-10.49

RIGHT OF WAY DETAIL SHEET
PARCELS 20, 25 & 30 AT STA. 666+00 & RR

17 / 17

REV	DATE	DESCRIPTION
0		
0		

COMPLETION DATE: 3/19/2020