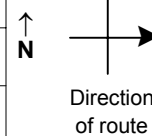


SPEED STUDY DATA SHEET

Date 10/03/06

County MUS

Municipality Muskingum County



Highway name & number 0004 (MUTTON RIDGE RD)

Street classification STANDARD RURAL

Log point	*	**	PHYSICAL CONDITION						*	**	TRAFFIC CONTROL DEVICES			SPEED		ACCIDENTS	Test Runs
														85%	PACE		
2.2																	
2.1																	
2.0											W1-2R	T					
1.9														W1-2L			
1.8																	
1.7																	
1.6											R1-2	T					

Edge of berm | 4 | 9 | Edge of pavement | 9 | 4 | Edge of berm

SPEED STUDY DATA SHEET

Date 10/03/06

County MUS

Municipality Muskingum County



Highway name & number 0004 (MUTTON RIDGE RD)

Street classification STANDARD RURAL

Log point	* **		PHYSICAL CONDITION										* **		TRAFFIC CONTROL DEVICES				SPEED		ACCIDENTS	Test Runs
																			85%	PACE		
2.9																						
2.8																						
2.7																						
2.6																						
2.5																						
2.4																						
2.3																						

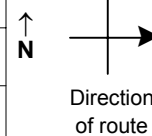
Edge of berm
4
9
Edge of pavement
9
4
Edge of berm

SPEED STUDY DATA SHEET

Date 10/03/06

County MUS

Municipality Muskingum County



Highway name & number 0004 (MUTTON RIDGE RD)

Street classification STANDARD RURAL

Log point	* **		PHYSICAL CONDITION										* **		TRAFFIC CONTROL DEVICES				SPEED		ACCIDENTS	Test Runs	
																				85%			PACE
3.6																							
3.5																							
3.4																							
3.3																							
3.2																							
3.1																							
3.0																							

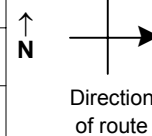
Edge of berm | 4 | 9 | Edge of pavement | 9 | 4 | Edge of berm

SPEED STUDY DATA SHEET

Date 10/03/06

County MUS

Municipality Muskingum County



Highway name & number 0004 (MUTTON RIDGE RD)

Street classification STANDARD RURAL

Log point	*	**	PHYSICAL CONDITION						*	**	TRAFFIC CONTROL DEVICES			SPEED		ACCIDENTS	Test Runs
														85%	PACE		
4.3																	
4.2																	
4.1																	
4.0																	
3.9																	
3.8																	
3.7																	

○
○
○
○₂
○

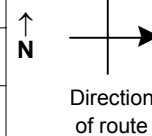
Edge of berm | 4 | 9 | Edge of pavement | 9 | 4 | Edge of berm

SPEED STUDY DATA SHEET

Date 10/03/06

County MUS

Municipality Muskingum County



Highway name & number 0004 (MUTTON RIDGE RD)

Street classification STANDARD RURAL

Log point	*	**	PHYSICAL CONDITION						*	**	TRAFFIC CONTROL DEVICES				SPEED		ACCIDENTS	Test Runs	
5.0																			
4.9																			
4.8																			
4.7																			
4.6																			
4.5														R1-1					
4.4																			

Edge of berm
4
|
9
Edge of pavement
9
|
4
Edge of berm

Sheet 5 of 5 sheets