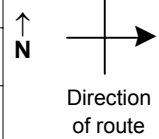


SPEED STUDY DATA SHEET

Date 10/02/06

County MUS

Municipality Muskingum County



Highway name & number 0005 (PLEASANT GROVE RD)

Street classification STANDARD RURAL

Log point	*	**	PHYSICAL CONDITION						*	**	TRAFFIC CONTROL DEVICES				SPEED		ACCIDENTS	Test Runs
															85%	PACE		
0.6					Y				●									
									○									
0.5									○									
									○									
0.4									○									
									○									
0.3									○									
									○									
0.2									○									
									○									
0.1									○									
									○									
0.0					Y			Y										

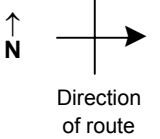
Edge of berm | 2 | 9 Edge of pavement | 9 | 2 Edge of berm

SPEED STUDY DATA SHEET

Date 10/02/06

County MUS

Municipality Muskingum County



Highway name & number 0005 (PLEASANT GROVE RD)

Street classification STANDARD RURAL

Log point	* **	PHYSICAL CONDITION						* **	TRAFFIC CONTROL DEVICES			SPEED		ACCIDENTS	Test Runs
												85%	PACE		
2.0		○								⋮					
		○								⋮					
		○								⋮					
		○								⋮					
		○								⋮					
1.9		○								⋮					
		○								⋮					
1.8		○								⋮					
										⋮					
										⋮					
1.7										⋮					
										⋮					
										⋮					
										⋮					
1.6										⋮					
										⋮					
										⋮					
										⋮					
										⋮					
1.5										⋮					
										⋮					
										⋮					
										⋮					
										⋮					
										⋮					
1.4										⋮					
										⋮					
										⋮					
										⋮					
										⋮					

TR 192 CLAY PK

S3-1
R2-1-40

R2-1

W3-1A

W13-1-20
W1-3R

S3-4

OM-3R

R2-1-40

W1-8

OM-3L

OM-3R

W1-8

W1-8

W1-8

W1-8

S3-4

Edge of berm | 2 | 9 | Edge of pavement | 9 | 2 | Edge of berm

Sheet 3 of 4 sheets

SPEED STUDY DATA SHEET

Date 10/02/06

County MUS

Municipality Muskingum County



Highway name & number 0005 (PLEASANT GROVE RD)

Street classification STANDARD RURAL

Direction of route

Log point	*	**	PHYSICAL CONDITION										*	**	TRAFFIC CONTROL DEVICES				SPEED		ACCIDENTS	Test Runs	
			85%		PACE																		
2.7																							
2.6																							
2.5																							
2.4																							
2.3																							
2.2																							
2.1																							

Edge of berm | 2 | 9 | Edge of pavement | 9 | 2 | Edge of berm