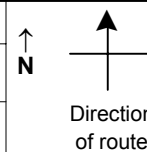


# SPEED STUDY DATA SHEET

Date 10/02/06

County MUS

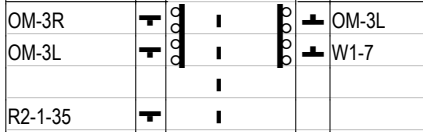
Municipality Muskingum County



Highway name & number 0005 (SPRY RD)

Street classification STANDARD RURAL

Log point	* **		PHYSICAL CONDITION						* **		TRAFFIC CONTROL DEVICES				SPEED		ACCIDENTS	Test Runs
															85%	PACE		
6.5																		
6.4																		
6.3																		
6.2																		
6.1																		
6.0																		
5.9																		



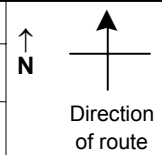
Edge of berm | 4 | 9 | Edge of pavement | 9 | 4 | Edge of berm

# SPEED STUDY DATA SHEET

Date 10/02/06

County MUS

Municipality Muskingum County



Highway name & number 0005 (SPRY RD)

Street classification STANDARD RURAL

Log point	* **		PHYSICAL CONDITION										* **		TRAFFIC CONTROL DEVICES				SPEED		ACCIDENTS	Test Runs											
																							85%	PACE									
7.2																	W13-1-25	T															
																	W1-5L	T															
7.1																																	
7.0																																	
6.9																																	
6.8																	S3-1	T															
6.7																																	
6.6																	W8-H17	T															

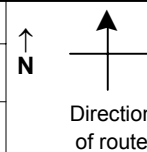
Edge of berm | 4 | 9 | Edge of pavement | 9 | 4 | Edge of berm

# SPEED STUDY DATA SHEET

Date 10/02/06

County MUS

Municipality Muskingum County



Highway name & number 0005 (SPRY RD)

Street classification STANDARD RURAL

Log point	*	**	PHYSICAL CONDITION							*	**	TRAFFIC CONTROL DEVICES			SPEED		ACCIDENTS	Test Runs
															85%	PACE		
7.9			○															
									○	○ <sup>2</sup>								
7.8																		
7.7																		
7.6																		
7.5																		
7.4																		
7.3																		

TR 442 (E WHEELING RD)  
TR 42 (PARK LN)

R2-1-35  
W11-7

R2-1-35

Edge of berm | 4 | 9 | Edge of pavement | 9 | 4 | Edge of berm

# SPEED STUDY DATA SHEET

Date 10/02/06

County MUS

Municipality Muskingum County

↑  
N



Direction  
of route

Highway name & number 0005 (SPRY RD)

Street classification STANDARD RURAL

Log point	* **		PHYSICAL CONDITION										* **		TRAFFIC CONTROL DEVICES				SPEED		ACCIDENTS	Test Runs		
			85%				PACE																	
8.6															R2-1-35	T								
8.5															W13-1-25	T								
8.4															S3-1	T								
8.3																		S3-1						
8.2																								
8.1																								
8.0																								

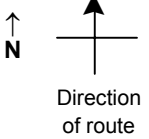
Edge of berm | 4 | 9 | Edge of pavement | 9 | 4 | Edge of berm

# SPEED STUDY DATA SHEET

Date 10/02/06

County MUS

Municipality Muskingum County



Highway name & number 0005 (SPRY RD)

Street classification STANDARD RURAL

Log point	*	**	PHYSICAL CONDITION						*	**	TRAFFIC CONTROL DEVICES				SPEED		ACCIDENTS	Test Runs
9.3																		
9.2																		
9.1																		
9.0																		
8.9																		
8.8																		
8.7																		

