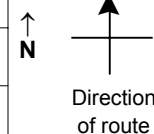


SPEED STUDY DATA SHEET

 Date 10/10/06

 County MUS

 Municipality Muskingum County

 Highway name & number 0008A (COUNTY LINE RD)

 Street classification STANDARD RURAL

Log point	* **	PHYSICAL CONDITION							* **	TRAFFIC CONTROL DEVICES			SPEED		ACCIDENTS	Test Runs
													85%	PACE		
		○							W15-97	T						
0.6		○					○									
		○														
		○														
0.5		○														
		○														
		○														
0.4		○					○									
		○														
		○														
0.3		○					○ ₂									
0.2																
0.1																
0.0		□							R1-1	T						

Edge of berm | 2 | 11 | Edge of pavement | 11 | 2 | Edge of berm

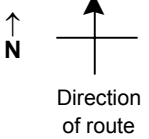
US 40

SPEED STUDY DATA SHEET

Date 10/10/06

County MUS

Municipality Muskingum County



Highway name & number 0008A (COUNTY LINE RD)

Street classification STANDARD RURAL

Log point	*	**	PHYSICAL CONDITION										*	**	TRAFFIC CONTROL DEVICES			SPEED		ACCIDENTS	Test Runs		
																		85%	PACE				
1.3			○																				
1.2			○									○											
1.1			○									○											
1.0			○									○				▬ W15-97							
0.9																							
0.8			○									○											
0.7			○																				

Edge of berm | 2 | 11 | Edge of pavement | 11 | 2 | Edge of berm

SPEED STUDY DATA SHEET

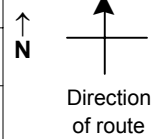
Date 10/10/06

County MUS

Municipality Muskingum County

Highway name & number 0008A (COUNTY LINE RD)

Street classification STANDARD RURAL



Log point	* **		PHYSICAL CONDITION								* **		TRAFFIC CONTROL DEVICES				SPEED		ACCIDENTS	Test Runs
															85%	PACE				
2.0																				
1.9																				
1.8																				
1.7																				
1.6																				
1.5																				
1.4			○		*	BEGIN CR 412	*													
			○																	

Edge of berm | 2 | 11
Edge of pavement | 11 | 2
Edge of berm