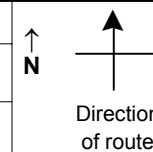


SPEED STUDY DATA SHEET

Date 10/11/06

County MUS

Municipality Muskingum County



Highway name & number 0008 (COTTAGE HILL RD)

Street classification STANDARD RURAL

Log point	* **	PHYSICAL CONDITION										* **	TRAFFIC CONTROL DEVICES			SPEED		ACCIDENTS	Test Runs
																85%	PACE		
0.6																			
0.5																			
0.4		⌠		∪		TR 666 (VARNER LANE)							W5-3	┐					
0.3				∪		══════════════════							OM-3R	┐		┐	OM-3L		
0.2														┐		┐	OM-3R		
0.1														┐					
0.0														┐		┐	W5-3		

Edge of berm | 3 | 9
Edge of pavement | 9 | 3
Edge of berm

SPEED STUDY DATA SHEET

Date 10/11/06

County MUS

Municipality Muskingum County

↑
N



Direction
of route

Highway name & number 0008 (COTTAGE HILL RD)

Street classification STANDARD RURAL

Log point	*	**	PHYSICAL CONDITION						*	**	TRAFFIC CONTROL DEVICES			SPEED		ACCIDENTS	Test Runs
1.3																	
1.2																	
1.1																	
1.0																	
0.9																	
0.8																	
0.7																	

CR 8 (SIDLE RD)



W11-7



S3-1

Edge of berm | 3 | 9 | Edge of pavement | 9 | 3 | Edge of berm

Sheet 2 of 4 sheets

SPEED STUDY DATA SHEET

Date 10/11/06

County MUS

Municipality Muskingum County

↑
N



Direction
of route

Highway name & number 0008 (COTTAGE HILL RD)

Street classification STANDARD RURAL

Log point	*	**	PHYSICAL CONDITION										*	**	TRAFFIC CONTROL DEVICES			SPEED		ACCIDENTS	Test Runs		
																		85%	PACE				
2.0																							
1.9																							
1.8																							
1.7																							
1.6																							
1.5																							
1.4																							

CR 8 (PERT HILL RD)
CR 121 (CROWN RD)

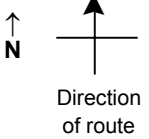
Edge of berm | 3 | 9 | Edge of pavement | 9 | 3 | Edge of berm

SPEED STUDY DATA SHEET

Date 10/11/06

County MUS

Municipality Muskingum County



Highway name & number 0008 (COTTAGE HILL RD)

Street classification STANDARD RURAL

Log point	* **		PHYSICAL CONDITION						* **		TRAFFIC CONTROL DEVICES				SPEED		ACCIDENTS	Test Runs
															85%	PACE		
2.7					∪	CR 408 (PLEASANT VALLEY RD)	∪						R1-1					
2.6																		
2.5																		
2.4																		
2.3																		
2.2					∪	=====	∪						OM-3R		OM-3L			
2.1												OM-3L		OM-3R				

Edge of berm | 3 | 9 | Edge of pavement | 9 | 3 | Edge of berm