

SPEED STUDY DATA SHEET

 Date 09/27/06

 County MUS

 Municipality Muskingum County

 Highway name & number 0013 (YEARY RD)

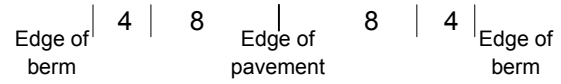
 Street classification STANDARD RURAL

↑ N



Direction of route

Log point	* **	PHYSICAL CONDITION											* **	TRAFFIC CONTROL DEVICES				SPEED		ACCIDENTS	Test Runs																			
																		85%	PACE																					
0.6																																								
0.5																																								
0.4																																								
0.3																																								
0.2																																								
0.1																																								
0.0																																								



SPEED STUDY DATA SHEET

Date 09/27/06

County MUS

Municipality Muskingum County



Highway name & number 0013 (YEARY RD)

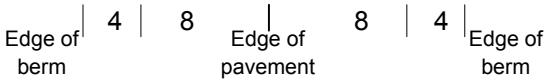
Street classification STANDARD RURAL

Direction of route

Log point	*	**	PHYSICAL CONDITION										*	**	TRAFFIC CONTROL DEVICES			SPEED		ACCIDENTS	Test Runs		
																		85%	PACE				
1.3																							
1.2																							
1.1																							
1.0																							
0.9																							
0.8																							
0.7																							

SPUR TO TR 166 (REIKER HILL RD)
TR 166 (REIKER HILL RD)

YY



SPEED STUDY DATA SHEET

Date 09/27/06

County MUS

Municipality Muskingum County

↑
N



Direction
of route

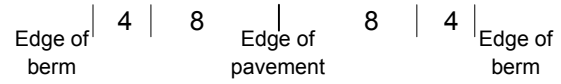
Highway name & number 0013 (YEARY RD)

Street classification STANDARD RURAL

Log point	* **	PHYSICAL CONDITION							* **	TRAFFIC CONTROL DEVICES			SPEED		ACCIDENTS	Test Runs
												85%	PACE			
2.0																
1.9																
1.8																
1.7																
1.6																
1.5																
1.4																

○

∩ TR 333 (HOGUE RD)

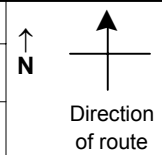


SPEED STUDY DATA SHEET

Date 09/27/06

County MUS

Municipality Muskingum County



Highway name & number 0013 (YEARY RD)

Street classification STANDARD RURAL

Log point	* **		PHYSICAL CONDITION										* **		TRAFFIC CONTROL DEVICES				SPEED		ACCIDENTS	Test Runs		
																	85%	PACE						
2.7																								
2.6																								
2.5																								
2.4																								
2.3																								
2.2																								
2.1																								

