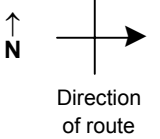


SPEED STUDY DATA SHEET

Date 09/27/06

County MUS

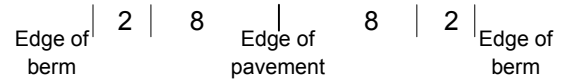
Municipality Muskingum County



Highway name & number 0017 (GRANNY'S KNOB RD)

Street classification STANDARD RURAL

Log point	* **		PHYSICAL CONDITION								* **		TRAFFIC CONTROL DEVICES				SPEED		ACCIDENTS	Test Runs	
																	85%	PACE			
0.6																					
0.5																					
0.4																					
0.3																					
0.2																					
0.1																					
0.0																					



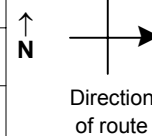
SR 83

SPEED STUDY DATA SHEET

Date 09/27/06

County MUS

Municipality Muskingum County

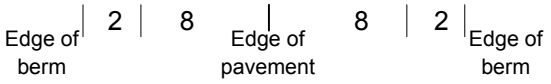


Highway name & number 0017 (GRANNY'S KNOB RD)

Street classification STANDARD RURAL

Log point	*	**	PHYSICAL CONDITION										*	**	TRAFFIC CONTROL DEVICES			SPEED		ACCIDENTS	Test Runs		
																		85%	PACE				
1.3																							
1.2																							
1.1																							
1.0																							
0.9																							
0.8																							
0.7																							

TR 176 (BARKER LN) Y

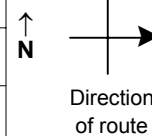


SPEED STUDY DATA SHEET

Date 09/27/06

County MUS

Municipality Muskingum County



Highway name & number 0017 (GRANNY'S KNOB RD)

Street classification STANDARD RURAL

Log point	* **		PHYSICAL CONDITION										* **		TRAFFIC CONTROL DEVICES				SPEED		ACCIDENTS	Test Runs		
																	85%	PACE						
2.0																								
1.9																								
1.8																								
1.7																								
1.6																								
1.5																								
1.4																								

TR 53 (DICKSON RD) Y

○

Edge of berm | 2 | 8 | Edge of pavement | 8 | 2 | Edge of berm

