

SPEED STUDY DATA SHEET

Date 09/27/06

County MUS

Municipality Muskingum County

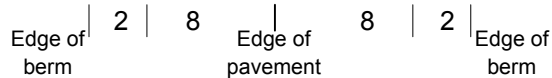


Highway name & number 0018 (SALEM CHURCH RD)

Street classification STANDARD RURAL

Direction of route

Log point	*	**	PHYSICAL CONDITION						*	**	TRAFFIC CONTROL DEVICES			SPEED		ACCIDENTS	Test Runs
			85%		PACE												
0.6											-						
0.5											-						
0.4											-						
0.3			<				>			T	T	T	T	T	T	T	T
0.2											-						
0.1											-						
0.0			⊕	<	CR 64 (NORFIELD RD)	>				T	T	T	T	T	T	T	T

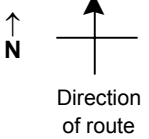


SPEED STUDY DATA SHEET

Date 09/27/06

County MUS

Municipality Muskingum County



Highway name & number 0018 (SALEM CHURCH RD)

Street classification STANDARD RURAL

Log point	* **		PHYSICAL CONDITION										* **		TRAFFIC CONTROL DEVICES				SPEED		ACCIDENTS	Test Runs					
																	85%	PACE									
1.3													O			W8-7	T	R2-1-35									
1.2													O2														
1.1																		W1-5L									
1.0																											
0.9																											
0.8																											
0.7													O														

Edge of berm | 2 | 8 | Edge of pavement | 8 | 2 | Edge of berm

SPEED STUDY DATA SHEET

Date 09/27/06

County MUS

Municipality Muskingum County

↑
N



Direction
of route

Highway name & number 0018 (SALEM CHURCH RD)

Street classification STANDARD RURAL

Log point	*	**	PHYSICAL CONDITION										*	**	TRAFFIC CONTROL DEVICES			SPEED		ACCIDENTS	Test Runs	
																		85%	PACE			
2.7																						
2.6																						
2.5																						
2.4																						
2.3																						
2.2																						
2.1																						

TR 356 (KNICELY RD)

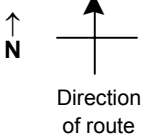
Edge of berm | 2 | 8 | Edge of pavement | 8 | 2 | Edge of berm

SPEED STUDY DATA SHEET

Date 09/27/06

County MUS

Municipality Muskingum County



Highway name & number 0018 (SALEM CHURCH RD)

Street classification STANDARD RURAL

Log point	*	**	PHYSICAL CONDITION						*	**	TRAFFIC CONTROL DEVICES			SPEED		ACCIDENTS	Test Runs	
3.4																		
3.3																		
3.2			∪	SR 93	∪						R2-1-35	T		R1-1				
3.1														W3-1A				
3.0																		
2.9																		
2.8																		

Edge of berm | 2 | 8
Edge of pavement | 8 | 2
Edge of berm