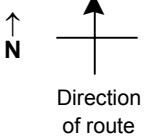


SPEED STUDY DATA SHEET

Date 09/27/06

County MUS

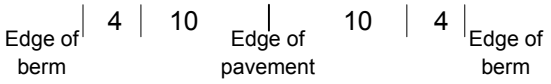
Municipality Muskingum County



Highway name & number 0018 (YOUNG AMERICA RD)

Street classification STANDARD RURAL

Log point	* **		PHYSICAL CONDITION										* **		TRAFFIC CONTROL DEVICES				SPEED		ACCIDENTS	Test Runs
															85%	PACE						
3.9																						
3.8																						
3.7																						
3.6																						
3.5																						
3.4																						
3.3																						



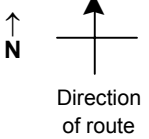
SR 93

SPEED STUDY DATA SHEET

Date 09/27/06

County MUS

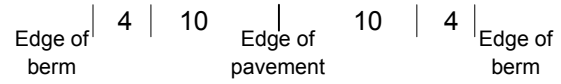
Municipality Muskingum County



Highway name & number 0018 (YOUNG AMERICA RD)

Street classification STANDARD RURAL

Log point	*	**	PHYSICAL CONDITION						*	**	TRAFFIC CONTROL DEVICES			SPEED		ACCIDENTS	Test Runs
														85%	PACE		
4.6																	
4.5																	
4.4																	
4.3																	
4.2																	
4.1																	
4.0																	



SPEED STUDY DATA SHEET

Date 09/27/06

County MUS

Municipality Muskingum County

↑
N



Direction
of route

Highway name & number 0018 (YOUNG AMERICA RD)

Street classification STANDARD RURAL

Log point	*	**	PHYSICAL CONDITION										*	**	TRAFFIC CONTROL DEVICES				SPEED		ACCIDENTS	Test Runs		
			85%		PACE																			
5.3																								
5.2																								
5.1																								
5.0																								
4.9																								
4.8																								
4.7																								

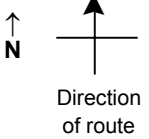
Edge of berm | 4 | 10 | Edge of pavement | 10 | 4 | Edge of berm

SPEED STUDY DATA SHEET

Date 09/27/06

County MUS

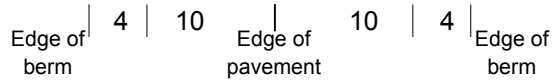
Municipality Muskingum County



Highway name & number 0018 (YOUNG AMERICA RD)

Street classification STANDARD RURAL

Log point	*	**	PHYSICAL CONDITION								*	**	TRAFFIC CONTROL DEVICES				SPEED		ACCIDENTS	Test Runs
			85%		PACE															
6.0			○																	
5.9			○																	
5.8			○																	
5.7												∧	TR 336 (FAIRVIEW CHURCH RD)							
5.6												∧	SPUR TO TR 336 (FAIRVIEW CHURC							
5.5																				
5.4																				



SPEED STUDY DATA SHEET

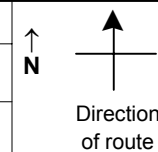
Date 09/27/06

County MUS

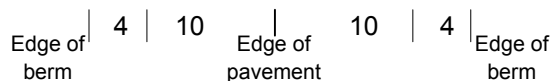
Municipality Muskingum County

Highway name & number 0018 (YOUNG AMERICA RD)

Street classification STANDARD RURAL



Log point	*	**	PHYSICAL CONDITION						*	**	TRAFFIC CONTROL DEVICES			SPEED		ACCIDENTS	Test Runs
														85%	PACE		
6.7			○														
6.6																	
6.5																	
6.4			○														
6.3																	
6.2																	
6.1																	

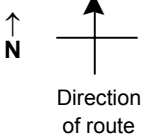


SPEED STUDY DATA SHEET

Date 09/27/06

County MUS

Municipality Muskingum County



Highway name & number 0018 (YOUNG AMERICA RD)

Street classification STANDARD RURAL

Log point	* **		PHYSICAL CONDITION								* **		TRAFFIC CONTROL DEVICES				SPEED		ACCIDENTS	Test Runs	
																	85%	PACE			
7.4																					
7.3																	R1-1				
7.2																					
7.1																					
7.0																					
6.9																					
6.8																					

CR 12 (EDGEMOOR RD)

R1-1

