

SPEED STUDY DATA SHEET

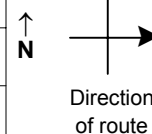
Date 10/02/06

County MUS

Municipality Muskingum County

Highway name & number 0022 (CLAY PIKE)

Street classification STANDARD RURAL



Log point	*	**	PHYSICAL CONDITION										* **	TRAFFIC CONTROL DEVICES			SPEED		ACCIDENTS	Test Runs	
			85%		PACE																
0.6																					
0.5																					
0.4																					
0.3																					
0.2																					
0.1																					
0.0																					

TR 106 (WOLF RUN RD)

S3-1
W8-H17
R1-1 R2-1-35

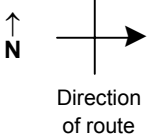
Edge of berm | 3 | 8 | Edge of pavement | 8 | 3 | Edge of berm

SPEED STUDY DATA SHEET

Date 10/02/06

County MUS

Municipality Muskingum County



Highway name & number 0022 (CLAY PIKE)

Street classification STANDARD RURAL

Log point	* **		PHYSICAL CONDITION										* **		TRAFFIC CONTROL DEVICES					SPEED		ACCIDENTS	Test Runs							
																				85%	PACE									
1.3			○																											
1.2			○														W5-2	R12-1/24 Ton	OM-3R	OM-3L	R2-1-35	R-94/24 Ton	OM-3L	OM-3R	W5-2					
1.1																														
1.0																														
0.9																	R2-1-35	T												
0.8			○																											
0.7			○																											

TR 209 (OKEY RD)

TR 209 (LONG RD)

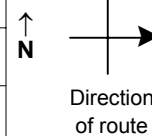
Edge of berm | 3 | 8 | Edge of pavement | 8 | 3 | Edge of berm

SPEED STUDY DATA SHEET

Date 10/02/06

County MUS

Municipality Muskingum County



Highway name & number 0022 (CLAY PIKE)

Street classification STANDARD RURAL

Log point	* **		PHYSICAL CONDITION										* **		TRAFFIC CONTROL DEVICES						SPEED		ACCIDENTS	Test Runs			
															85% PACE												
2.0																											
1.9																											
1.8																											
1.7																											
1.6																											
1.5																											
1.4																											

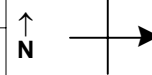
Edge of berm | 3 | 8 | Edge of pavement | 8 | 3 | Edge of berm

SPEED STUDY DATA SHEET

Date 10/02/06

County MUS

Municipality Muskingum County



Highway name & number 0022 (CLAY PIKE)

Street classification STANDARD RURAL

Direction of route

Log point	*	**	PHYSICAL CONDITION						*	**	TRAFFIC CONTROL DEVICES			SPEED		ACCIDENTS	Test Runs
														85%	PACE		
2.7																	
2.6																	
2.5																	
2.4																	
2.3																	
2.2																	
2.1																	

CR 199 (ZANE GREY RD)

R1-1

SPUR TO CR 105 (PINE LAKE RD)

CR 105 (PINE LAKE RD)

R2-1-35

Edge of berm | 3 | 8 | Edge of pavement | 8 | 3 | Edge of berm

Sheet 4 of 6 sheets

SPEED STUDY DATA SHEET

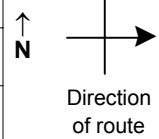
Date 10/02/06

County MUS

Municipality Muskingum County

Highway name & number 0022 (CLAY PIKE)

Street classification STANDARD RURAL



Log point	*	**	PHYSICAL CONDITION										*	**	TRAFFIC CONTROL DEVICES			SPEED		ACCIDENTS	Test Runs			
			85%	PACE	85%	PACE																		
3.4																								
3.3																								
3.2																								
3.1																								
3.0																								
2.9																								
2.8																								

Edge of berm | 3 | 8 | Edge of pavement | 8 | 3 | Edge of berm

SPEED STUDY DATA SHEET

Date 10/02/06

County MUS

Municipality Muskingum County



Direction of route

Highway name & number 0022 (CLAY PIKE)

Street classification STANDARD RURAL

Log point

	* **	PHYSICAL CONDITION										* **	TRAFFIC CONTROL DEVICES				SPEED		ACCIDENTS	Test Runs
																	85%	PACE		
4.1																				
4.0																				
3.9																				
3.8																				
3.7																				
3.6																				
3.5																				

CR 368 (CLAY PIKE)



Edge of berm | 3 | 8 | Edge of pavement | 8 | 3 | Edge of berm