

SPEED STUDY DATA SHEET

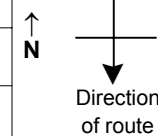
Date 10/02/06

County MUS

Municipality Muskingum County

Highway name & number 0022 (TOM RD)

Street classification STANDARD RURAL



Log point	* **		PHYSICAL CONDITION										* **		TRAFFIC CONTROL DEVICES				SPEED		ACCIDENTS	Test Runs	
			85%	PACE																			
4.4			○																				
4.3																							
4.2																							
4.1			○													T							
4.0																							
3.9																							
3.8																T							

Edge of berm | 3 | 8 | Edge of pavement | 8 | 3 | Edge of berm

SPEED STUDY DATA SHEET

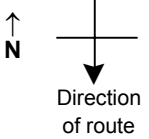
Date 10/02/06

County MUS

Municipality Muskingum County

Highway name & number 0022 (TOM RD)

Street classification STANDARD RURAL



Log point	* **		PHYSICAL CONDITION										* **		TRAFFIC CONTROL DEVICES				SPEED		ACCIDENTS	Test Runs
																			85%	PACE		
5.1																						
5.0																						
4.9																						
4.8			<div style="display: flex; justify-content: space-between; align-items: center;"> CR 83 (GREEN VALLEY RD) </div>																			
4.7			<div style="display: flex; justify-content: space-between; align-items: center;"> </div>																			
4.6																						
4.5																						

Edge of berm | 3 | 8 | Edge of pavement | 8 | 3 | Edge of berm