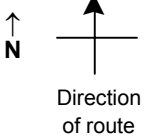


SPEED STUDY DATA SHEET

Date 10/05/06

County MUS

Municipality Muskingum County



Highway name & number 0028 (HOPEWELL RD)

Street classification STANDARD RURAL

Log point	* **		PHYSICAL CONDITION										* **		TRAFFIC CONTROL DEVICES				SPEED		ACCIDENTS	Test Runs							
																	85%	PACE											
							*	BRIDGE HWY UNDER HWY	*																				
2.0																													
1.9																													
1.8																													
1.7																													
1.6																													
1.5																													
1.4																													

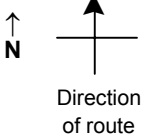
Edge of berm | 5 | 9 | Edge of pavement | 9 | 5 | Edge of berm

SPEED STUDY DATA SHEET

Date 10/05/06

County MUS

Municipality Muskingum County



Highway name & number 0028 (HOPEWELL RD)

Street classification STANDARD RURAL

Log point	* **		PHYSICAL CONDITION										* **		TRAFFIC CONTROL DEVICES				SPEED		ACCIDENTS	Test Runs	
																	85%	PACE					
2.7																							
2.6																							
2.5																							
2.4																							
2.3																							
2.2																							
2.1																							

Edge of berm | 5 | 9 | Edge of pavement | 9 | 5 | Edge of berm