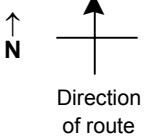


SPEED STUDY DATA SHEET

 Date 10/05/06

 County MUS

 Municipality Muskingum County

 Highway name & number 0030 (MT PERRY RD)

 Street classification STANDARD RURAL

Log point	* **		PHYSICAL CONDITION						* **		TRAFFIC CONTROL DEVICES				SPEED		ACCIDENTS	Test Runs
															85%	PACE		
			○								-							
0.8											-							
0.7			●			∩	TR 285 (PALMER RD)	∩										
			○															
			○															
0.6			○															
0.5			○									T	S3-1					
0.4												T	S3-1					
			○															
0.3																		
0.2																		
							∩	TR 30 (BAIRD RD)										

Edge of berm | 3 | 9 | Edge of pavement | 9 | 3 | Edge of berm

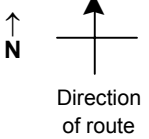
Sheet 1 of 4 sheets

SPEED STUDY DATA SHEET

Date 10/05/06

County MUS

Municipality Muskingum County



Highway name & number 0030 (MT PERRY RD)

Street classification STANDARD RURAL

Log point	* **		PHYSICAL CONDITION										* **		TRAFFIC CONTROL DEVICES				SPEED		ACCIDENTS	Test Runs			
																					85%	PACE			
1.5																									
1.4																									
1.3																									
1.2																									
1.1																									
1.0																									
0.9																									

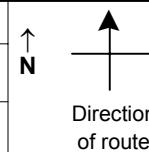
Edge of berm | 3 | 9 | Edge of pavement | 9 | 3 | Edge of berm

SPEED STUDY DATA SHEET

Date 10/05/06

County MUS

Municipality Muskingum County



Highway name & number 0030 (MT PERRY RD)

Street classification STANDARD RURAL

Log point	* **		PHYSICAL CONDITION										* **		TRAFFIC CONTROL DEVICES				SPEED		ACCIDENTS	Test Runs			
															85%	PACE									
2.2			TR 286 (IDEN RD) Y												a	b									
2.1															-	M2-1									
2.0			O																						
1.9			O																						
1.8			●																						
1.7																									
1.6																									

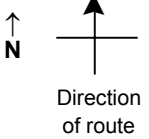
Edge of berm
3
9
Edge of pavement
9
3
Edge of berm

SPEED STUDY DATA SHEET

Date 10/05/06

County MUS

Municipality Muskingum County



Highway name & number 0030 (MT PERRY RD)

Street classification STANDARD RURAL

Log point	* **		PHYSICAL CONDITION										* **		TRAFFIC CONTROL DEVICES				SPEED		ACCIDENTS	Test Runs
																	85%	PACE				
2.9																						
2.8																						
2.7																						
2.6																						
2.5																						
2.4																						
2.3																						

MAIN ST



R1-1

US 40



R1-1



R1-1

EXIT RAMP FROM I 70 WEST



W11-1

OM-3R



W3-1
OM-3L

ENT RAMP TO I 70 EAST



OM-3L



OM-3R

Edge of berm | 3 | 9 | Edge of pavement | 9 | 3 | Edge of berm

Sheet 4 of 4 sheets