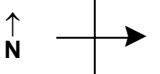


SPEED STUDY DATA SHEET

Date 09/26/06

County MUS

Municipality Muskingum County



Highway name & number 0031 (RURAL DALE RD)

Street classification STANDARD RURAL

Direction of route

Log point	* **		PHYSICAL CONDITION										* **		TRAFFIC CONTROL DEVICES			SPEED		ACCIDENTS	Test Runs
																	85%	PACE			
0.6																					
0.5																					
0.4																					
0.3																					
0.2																					
0.1																					
0.0																					

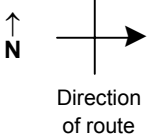
Edge of berm | 2 | 9 | Edge of pavement | 9 | 2 | Edge of berm

SPEED STUDY DATA SHEET

Date 09/26/06

County MUS

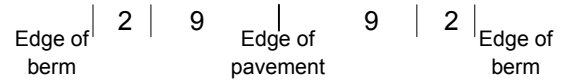
Municipality Muskingum County



Highway name & number 0031 (RURAL DALE RD)

Street classification STANDARD RURAL

Log point	* **		PHYSICAL CONDITION										* **		TRAFFIC CONTROL DEVICES				SPEED		ACCIDENTS	Test Runs
																			85%	PACE		
1.3																						
1.2																						
1.1																						
1.0																						
0.9																						
0.8																						
0.7																						

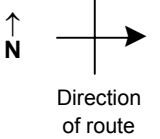


SPEED STUDY DATA SHEET

Date 09/26/06

County MUS

Municipality Muskingum County



Highway name & number 0031 (RURAL DALE RD)

Street classification STANDARD RURAL

Log point	* **		PHYSICAL CONDITION										* **		TRAFFIC CONTROL DEVICES				SPEED		ACCIDENTS	Test Runs
																			85%	PACE		
2.0																	R2-1-35					
1.9															S3-4	T						
1.8			○									○										
1.7																	S3-1					
1.6																						
1.5			○																			
1.4																						

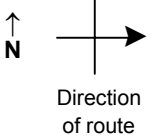
Edge of berm | 2 | 9 | Edge of pavement | 9 | 2 | Edge of berm

SPEED STUDY DATA SHEET

Date 09/26/06

County MUS

Municipality Muskingum County



Highway name & number 0031 (RURAL DALE RD)

Street classification STANDARD RURAL

Log point	* **		PHYSICAL CONDITION										* **		TRAFFIC CONTROL DEVICES					SPEED		ACCIDENTS	Test Runs		
			85%		PACE																				
2.7																									
2.6																									
2.5																									
2.4																									
2.3																									
2.2																									
2.1																									

HUNT CLUB LN

R2-1-35

R-94/15 Ton

OM-3R

OM-3L

OM-3L

OM-3R

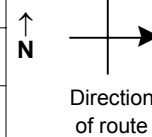
R-94/15 Ton

Edge of berm | 2 | 9 | Edge of pavement | 9 | 2 | Edge of berm

SPEED STUDY DATA SHEET

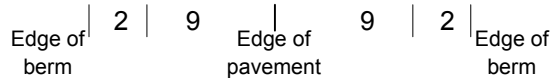
 Date 09/26/06

 County MUS

 Municipality Muskingum County

 Highway name & number 0031 (RURAL DALE RD)

 Street classification STANDARD RURAL

Log point	* **		PHYSICAL CONDITION								* **		TRAFFIC CONTROL DEVICES				SPEED		ACCIDENTS	Test Runs
																	85%	PACE		
3.4																				
3.3																				
3.2																				
3.1																				
3.0																				
2.9																				
2.8																				

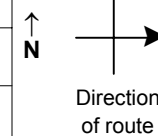


SPEED STUDY DATA SHEET

Date 09/26/06

County MUS

Municipality Muskingum County



Highway name & number 0031 (RURAL DALE RD)

Street classification STANDARD RURAL

Log point	* **		PHYSICAL CONDITION						* **		TRAFFIC CONTROL DEVICES			SPEED		ACCIDENTS	Test Runs	
														85%	PACE			
4.1			○															
4.0																		
3.9																		
3.8																		
3.7																		
3.6																		
3.5																		

TR 376 (OAKLAND RD)

TR 376 (OAKLAND RD)

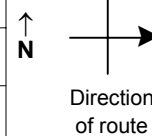
Edge of berm | 2 | 9 | Edge of pavement | 9 | 2 | Edge of berm

SPEED STUDY DATA SHEET

Date 09/26/06

County MUS

Municipality Muskingum County



Highway name & number 0031 (RURAL DALE RD)

Street classification STANDARD RURAL

Log point	* **	PHYSICAL CONDITION						* **	TRAFFIC CONTROL DEVICES				SPEED		ACCIDENTS	Test Runs
													85%	PACE		
4.8																
4.7				∪												
4.6																
4.5																
4.4																
4.3																
4.2																

CR 59 (HIGH HILL RD)

OM-3R
OM-3L

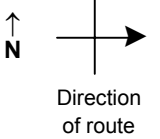
Edge of berm | 2 | 9 | Edge of pavement | 9 | 2 | Edge of berm

SPEED STUDY DATA SHEET

Date 09/26/06

County MUS

Municipality Muskingum County



Highway name & number 0031 (RURAL DALE RD)

Street classification STANDARD RURAL

Log point	* **		PHYSICAL CONDITION										* **		TRAFFIC CONTROL DEVICES				SPEED		ACCIDENTS	Test Runs				
			85%		PACE																					
5.5																										
5.4																	OM-3R	T			T	OM-3L				
																	OM-3L	T	g		β	OM-3R				
5.3																										
5.2																										
5.1																										
5.0																										
4.9																										

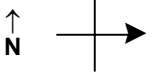
Edge of berm | 2 | 9 | Edge of pavement | 9 | 2 | Edge of berm

SPEED STUDY DATA SHEET

Date 09/26/06

County MUS

Municipality Muskingum County



Highway name & number 0031 (RURAL DALE RD)

Street classification STANDARD RURAL

Log point	*	**	PHYSICAL CONDITION						*	**	TRAFFIC CONTROL DEVICES			SPEED		ACCIDENTS	Test Runs
			85%	PACE	W1-2R	R12-1/30 Ton	R12-1/30 Ton										
6.2																	
6.1			○														
6.0																	
5.9																	
5.8			○	○										W1-2R	R12-1/30 Ton	R12-1/30 Ton	
5.7			○														
5.6																	

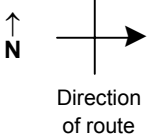
Edge of berm | 2 | 9
Edge of pavement | 9 | 2
Edge of berm

SPEED STUDY DATA SHEET

Date 09/26/06

County MUS

Municipality Muskingum County



Highway name & number 0031 (RURAL DALE RD)

Street classification STANDARD RURAL

Log point	*	**	PHYSICAL CONDITION						*	**	TRAFFIC CONTROL DEVICES			SPEED		ACCIDENTS	Test Runs
														85%	PACE		
6.9																	
6.8											W1-5L	T					
6.7																	
6.6																	
6.5																	
6.4																	
6.3																	

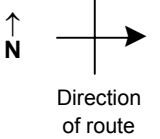
Edge of berm
| 2 | 9
Edge of pavement
| 9 | 2
Edge of berm

SPEED STUDY DATA SHEET

Date 09/26/06

County MUS

Municipality Muskingum County



Highway name & number 0031 (RURAL DALE RD)

Street classification STANDARD RURAL

Log point	* **		PHYSICAL CONDITION										* **		TRAFFIC CONTROL DEVICES				SPEED		ACCIDENTS	Test Runs		
																	85%	PACE						
7.6																								
7.5																								
7.4																								
7.3																								
7.2																								
7.1																								
7.0																								



R1-1 R1-1

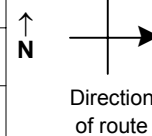
Edge of berm | 2 | 9 | Edge of pavement | 9 | 2 | Edge of berm

SPEED STUDY DATA SHEET

Date 09/26/06

County MUS

Municipality Muskingum County



Highway name & number 0031 (RURAL DALE RD)

Street classification STANDARD RURAL

Log point	*	**	PHYSICAL CONDITION								*	**	TRAFFIC CONTROL DEVICES				SPEED		ACCIDENTS	Test Runs
			85%		PACE															
8.3																				
8.2																				
8.1																				
8.0																				
7.9																				
7.8																				
7.7																				

TR 457 (COAL HILL RD)

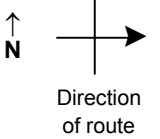
Edge of berm | 2 | 9 | Edge of pavement | 9 | 2 | Edge of berm

SPEED STUDY DATA SHEET

Date 09/26/06

County MUS

Municipality Muskingum County



Highway name & number 0031 (RURAL DALE RD)

Street classification STANDARD RURAL

Log point	*	**	PHYSICAL CONDITION						*	**	TRAFFIC CONTROL DEVICES			SPEED		ACCIDENTS	Test Runs
														85%	PACE		
9.0																	
8.9																	
8.8																	
8.7																	
8.6			∩														
8.5																	
8.4																	

TR 225 (PROUTY RD)

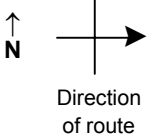
Edge of berm | 2 | 9 | Edge of pavement | 9 | 2 | Edge of berm

SPEED STUDY DATA SHEET

Date 09/26/06

County MUS

Municipality Muskingum County



Highway name & number 0031 (RURAL DALE RD)

Street classification STANDARD RURAL

Log point	* **		PHYSICAL CONDITION										* **		TRAFFIC CONTROL DEVICES				SPEED		ACCIDENTS	Test Runs		
																							85%	PACE
9.7																								
9.6																								
9.5																								
9.4																								
9.3						*																		
9.2																								
9.1																								

* GUE/MUS CO LINE EST *

|
|
|
|
|
|
|
|
|

Edge of berm | 2 | 9 | Edge of pavement | 9 | 2 | Edge of berm