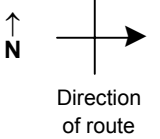


SPEED STUDY DATA SHEET

Date 09/26/06

County MUS

Municipality Muskingum County



Highway name & number 0032 (IRISH RIDGE RD)

Street classification STANDARD RURAL

Log point	*	**	PHYSICAL CONDITION						*	**	TRAFFIC CONTROL DEVICES				SPEED		ACCIDENTS	Test Runs
															85%	PACE		
6.9																		
6.8																		
6.7																		
6.6																		
6.5											W5-2	T						
6.4											W13-1-10	T						
											W1-3L	T						
6.3											R1-1	T						

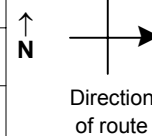
Edge of berm | 2 | 9 | Edge of pavement | 9 | 2 | Edge of berm

SPEED STUDY DATA SHEET

Date 09/26/06

County MUS

Municipality Muskingum County



Highway name & number 0032 (IRISH RIDGE RD)

Street classification STANDARD RURAL

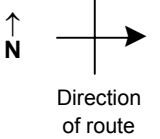
Log point	* **		PHYSICAL CONDITION										* **		TRAFFIC CONTROL DEVICES				SPEED		ACCIDENTS	Test Runs		
																			85%	PACE				
7.6			○																					
7.5											○	○												
7.4			○2								○													
7.3											●	○												
7.2			○																					
7.1																								
7.0																								

Edge of berm | 2 | 9 | Edge of pavement | 9 | 2 | Edge of berm

SPEED STUDY DATA SHEET

 Date 09/26/06

 County MUS

 Municipality Muskingum County

 Highway name & number 0032 (IRISH RIDGE RD)

 Street classification STANDARD RURAL

Log point	* **	PHYSICAL CONDITION								* **	TRAFFIC CONTROL DEVICES				SPEED		ACCIDENTS	Test Runs
															85%	PACE		
8.3																		
8.2																		
8.1																		
8.0																		
7.9																		
7.8																		
7.7																		

Edge of berm | 2 | 9 | Edge of pavement | 9 | 2 | Edge of berm

SPEED STUDY DATA SHEET

Date 09/26/06

County MUS

Municipality Muskingum County



Highway name & number 0032 (IRISH RIDGE RD)

Street classification STANDARD RURAL

Direction of route

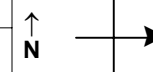
Log point	* **	PHYSICAL CONDITION										* **	TRAFFIC CONTROL DEVICES				SPEED		ACCIDENTS	Test Runs				
																		85%			PACE			
9.0		○										○		W1-1L	┐			└	W1-5L					
		○																						
8.9																								
		○																						
8.8																								
		○																						
8.7																								
8.6																								
		○																						
8.5																								
		○																						
8.4																								

Edge of berm | 2 | 9 | Edge of pavement | 9 | 2 | Edge of berm

SPEED STUDY DATA SHEET

 Date 09/26/06

 County MUS

 Municipality Muskingum County

 Highway name & number 0032 (IRISH RIDGE RD)

 Street classification STANDARD RURAL

Log point	* **		PHYSICAL CONDITION										* **		TRAFFIC CONTROL DEVICES				SPEED		ACCIDENTS	Test Runs
																			85%	PACE		
9.7																						
9.6																						
9.5																						
9.4																						
9.3																						
9.2																						
9.1																						

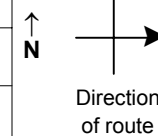
Edge of berm | 2 | 9 | Edge of pavement | 9 | 2 | Edge of berm

SPEED STUDY DATA SHEET

Date 09/26/06

County MUS

Municipality Muskingum County



Highway name & number 0032 (IRISH RIDGE RD)

Street classification STANDARD RURAL

Log point	* **		PHYSICAL CONDITION						* **		TRAFFIC CONTROL DEVICES				SPEED		ACCIDENTS	Test Runs			
															85%	PACE					
10.4			○									W5-3	┐								
												OM-3R	┐			┐	OM-3L				
												OM-3L	┐			┐	OM-3R				
																┐	W5-3				
10.3			○						○												
									○												
10.2									○												
									○												
10.1			○						○												
									○												
10.0									○												
									○												
9.9																┐	R2-1-35				
9.8			○																		

Edge of berm | 2 | 9 | Edge of pavement | 9 | 2 | Edge of berm

SPEED STUDY DATA SHEET

Date 09/26/06

County MUS

Municipality Muskingum County



Highway name & number 0032 (IRISH RIDGE RD)

Street classification STANDARD RURAL

Direction of route

Log point	* **		PHYSICAL CONDITION										* **		TRAFFIC CONTROL DEVICES				SPEED		ACCIDENTS	Test Runs	
			85%		PACE																		
11.1																							
11.0																							
10.9																							
10.8																							
10.7																							
10.6																							
10.5																							

TR 139 (DUNCON RD) Y

W13-1-25 T | R2-1-35

SPUR TO TR 139 (DUNCON RUN) Y

W1-5R T | R1-1

Edge of berm | 2 | 9 | Edge of pavement | 9 | 2 | Edge of berm

Sheet 7 of 7 sheets