

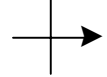
# SPEED STUDY DATA SHEET

Date 10/03/06

County MUS

Municipality Muskingum County

↑ N

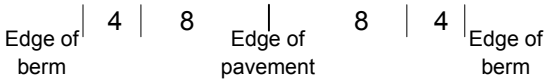


Direction of route

Highway name & number 0040 (MOLLIES ROCK RD)

Street classification STANDARD RURAL

Log point	* **	PHYSICAL CONDITION						* **	TRAFFIC CONTROL DEVICES			SPEED		ACCIDENTS	Test Runs	
												85%	PACE			
0.6																
0.5																
0.4																
0.3																
0.2																
0.1																
0.0																



# SPEED STUDY DATA SHEET

Date 10/03/06

County MUS

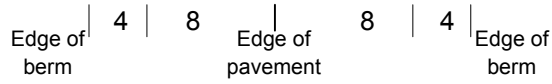
Municipality Muskingum County



Highway name & number 0040 (MOLLIES ROCK RD)

Street classification STANDARD RURAL

Log point	*	**	PHYSICAL CONDITION										*	**	TRAFFIC CONTROL DEVICES			SPEED		ACCIDENTS	Test Runs		
			85%	PACE																			
1.3																							
1.2																							
1.1																							
1.0																							
0.9																							
0.8																							
0.7																							

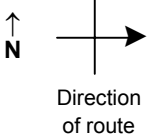


# SPEED STUDY DATA SHEET

Date 10/03/06

County MUS

Municipality Muskingum County



Highway name & number 0040 (MOLLIES ROCK RD)

Street classification STANDARD RURAL

Log point	* **		PHYSICAL CONDITION												* **		TRAFFIC CONTROL DEVICES			SPEED		ACCIDENTS	Test Runs																	
																				85% PACE																				
2.0																																								
1.9																																								
1.8																																								
1.7																																								
1.6																																								
1.5																																								
1.4																																								

TR 165 (BLACK SNAKE RD)

CR 155 (CHURCH HILL RD)

CR 164 (MADISON HALL RD)

SPUR TO CR 164 (MADISON HALL R)

R1-1

W8-6

S3-1

OM-3R

OM-3L

OM-3L

OM-3R

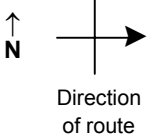
Edge of berm | 4 | 8 | Edge of pavement | 8 | 4 | Edge of berm

# SPEED STUDY DATA SHEET

Date 10/03/06

County MUS

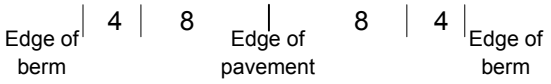
Municipality Muskingum County



Highway name & number 0040 (MOLLIES ROCK RD)

Street classification STANDARD RURAL

Log point	*	**	PHYSICAL CONDITION								*	**	TRAFFIC CONTROL DEVICES			SPEED		ACCIDENTS	Test Runs
																85%	PACE		
2.7																			
2.6																			
2.5																			
2.4																			
2.3																			
2.2																			
2.1																			

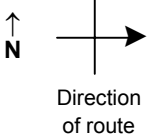


# SPEED STUDY DATA SHEET

Date 10/03/06

County MUS

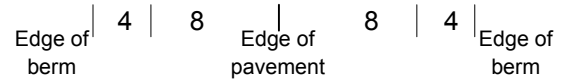
Municipality Muskingum County



Highway name & number 0040 (MOLLIES ROCK RD)

Street classification STANDARD RURAL

Log point	* **		PHYSICAL CONDITION										* **		TRAFFIC CONTROL DEVICES					SPEED		ACCIDENTS	Test Runs							
																		85%	PACE											
3.4																														
3.3																														
3.2																														
3.1															OM-3R															
3.0															R-94/20 Ton															
2.9															W5-3															
2.8															OM-3R															



# SPEED STUDY DATA SHEET

Date 10/03/06

County MUS

Municipality Muskingum County

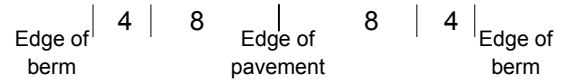


Highway name & number 0040 (MOLLIES ROCK RD)

Street classification STANDARD RURAL

Direction of route

Log point	*	**	PHYSICAL CONDITION								*	**	TRAFFIC CONTROL DEVICES				SPEED		ACCIDENTS	Test Runs
			85%		PACE															
4.1																				
4.0																				
3.9												W8-6	T							
3.8												W8-6	T							
3.7																				
3.6												W11-H13/truck	T							
												OM-3R	T							
												OM-3L	T	g						
3.5																				

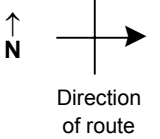


# SPEED STUDY DATA SHEET

Date 10/03/06

County MUS

Municipality Muskingum County



Highway name & number 0040 (MOLLIES ROCK RD)

Street classification STANDARD RURAL

Log point	* **		PHYSICAL CONDITION								* **		TRAFFIC CONTROL DEVICES				SPEED		ACCIDENTS	Test Runs
															85%	PACE				
4.8			○																	
4.7																				
4.6										○										
4.5																				
4.4																				
4.3																				
4.2																				

TR 114 (STEEL ROCK RD)

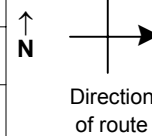
Edge of berm | 4 | 8 | Edge of pavement | 8 | 4 | Edge of berm

# SPEED STUDY DATA SHEET

Date 10/03/06

County MUS

Municipality Muskingum County



Highway name & number 0040 (MOLLIES ROCK RD)

Street classification STANDARD RURAL

Log point	* **			PHYSICAL CONDITION				* **			TRAFFIC CONTROL DEVICES			SPEED		ACCIDENTS	Test Runs
															85%		
5.5																	
5.4																	
5.3																	
5.2																	
5.1																	
5.0																	
4.9																	

TR 98 (RADCLIFF RD)

W13-1-20  
W2-2

Edge of berm | 4 | 8 | Edge of pavement | 8 | 4 | Edge of berm

Sheet 8 of 9 sheets

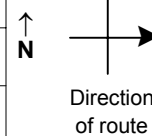


# SPEED STUDY DATA SHEET

Date 10/03/06

County MUS

Municipality Muskingum County



Highway name & number 0040 (MOLLIES ROCK RD)

Street classification STANDARD RURAL

Log point	* **		PHYSICAL CONDITION						* **		TRAFFIC CONTROL DEVICES			SPEED		ACCIDENTS	Test Runs
														85%	PACE		
6.2																	
6.1																	
6.0			○		Y	SR 208	Y	●					┌ R1-1				
5.9					Y	NO NAME RD	Y	○					┌ R5-H2B				
5.8						NO NAME RD	Y	○									
5.7			○					○									
5.6								○									

Edge of berm | 4 | 8 | Edge of pavement | 8 | 4 | Edge of berm