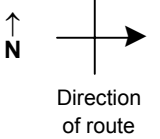


# SPEED STUDY DATA SHEET

Date 09/26/06

County MUS

Municipality Muskingum County



Highway name & number 0041 (LAMBERT RD)

Street classification STANDARD RURAL

Log point	* **		PHYSICAL CONDITION					* **		TRAFFIC CONTROL DEVICES			SPEED		ACCIDENTS	Test Runs
												85%	PACE			
0.6																
0.5																
0.4																
0.3																
0.2																
0.1																
0.0																

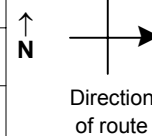
Edge of berm | 4 | 11 | Edge of pavement | 11 | 4 | Edge of berm

# SPEED STUDY DATA SHEET

Date 09/26/06

County MUS

Municipality Muskingum County



Highway name & number 0041 (LAMBERT RD)

Street classification STANDARD RURAL

Log point	* **		PHYSICAL CONDITION										* **		TRAFFIC CONTROL DEVICES					SPEED		ACCIDENTS	Test Runs
																				85%	PACE		
1.3																							
1.2															W13-1-25	T		W13-1-20					
1.2															OM-3R	T		W1-5R					
1.2															W1-5R	T		OM-3L					
1.2															OM-3L	T		R2-1-35					
1.2																		OM-3R					
1.1																		W8-H17					
1.0																							
0.9																							
0.8																							
0.7																							

