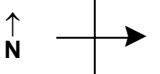


SPEED STUDY DATA SHEET

Date 09/26/06

County MUS

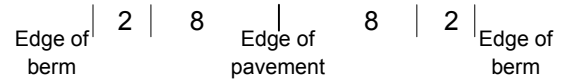
Municipality Muskingum County



Highway name & number 0043 (OAK GROVE RD)

Street classification STANDARD RURAL

Log point	*	**	PHYSICAL CONDITION						*	**	TRAFFIC CONTROL DEVICES			SPEED		ACCIDENTS	Test Runs
														85%	PACE		
0.6																	
0.5																	
0.4																	
0.3																	
0.2							○										
0.1																	
0.0			○		∩	SR 284	∩	○			R1-1	T					



SPEED STUDY DATA SHEET

Date 09/26/06

County MUS

Municipality Muskingum County



Highway name & number 0043 (OAK GROVE RD)

Street classification STANDARD RURAL

Direction of route

Log point	*	**	PHYSICAL CONDITION						*	**	TRAFFIC CONTROL DEVICES			SPEED		ACCIDENTS	Test Runs
														85%	PACE		
1.3																	
1.2												o o o o o					
1.1																	
1.0												o o o o o					
0.9																	
0.8																	
0.7																	

Edge of berm | 2 | 8 | Edge of pavement | 8 | 2 | Edge of berm

SPEED STUDY DATA SHEET

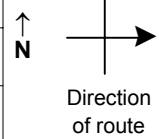
Date 09/26/06

County MUS

Municipality Muskingum County

Highway name & number 0043 (OAK GROVE RD)

Street classification STANDARD RURAL



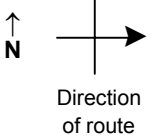
Log point	* **	PHYSICAL CONDITION										* **	TRAFFIC CONTROL DEVICES				SPEED		ACCIDENTS	Test Runs	
																	85%	PACE			
2.0												○									
1.9																					
1.8																					
1.7												○									
1.6												○									
1.5																					
1.4												○									

Edge of berm | 2 | 8 | Edge of pavement | 8 | 2 | Edge of berm

SPEED STUDY DATA SHEET

 Date 09/26/06

 County MUS

 Municipality Muskingum County

 Highway name & number 0043 (OAK GROVE RD)

 Street classification STANDARD RURAL

Log point	* **		PHYSICAL CONDITION								* **		TRAFFIC CONTROL DEVICES				SPEED		ACCIDENTS	Test Runs	
																	85%	PACE			
2.7																					
2.6					*		MOR/MUS CO LINE		*												
2.5							TR 221 (HORSE RUN RD)		Y												
2.4																					
2.3																					
2.2																					
2.1																					

Edge of berm | 2 | 8 Edge of pavement | 8 | 2 Edge of berm