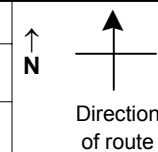


SPEED STUDY DATA SHEET

Date 09/27/06County MUSMunicipality Muskingum CountyHighway name & number 0045 (CUTLER LAKE RD)Street classification STANDARD RURAL

Log point	*	**	PHYSICAL CONDITION						*	**	TRAFFIC CONTROL DEVICES			SPEED		ACCIDENTS	Test Runs
														85%	PACE		
0.6																	
0.5																	
0.4																	
0.3																	
0.2																	
0.1																	
0.0																	

TR 681 (DINGEY RD)

TR 24 (RAYNER RD)

Edge of berm

3

7

Edge of pavement

7

3

Edge of berm

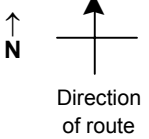
MOR/MUS CO LINE

SPEED STUDY DATA SHEET

Date 09/27/06

County MUS

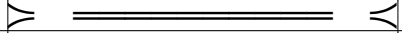
Municipality Muskingum County



Highway name & number 0045 (CUTLER LAKE RD)

Street classification STANDARD RURAL

Log point	* **		PHYSICAL CONDITION										* **		TRAFFIC CONTROL DEVICES				SPEED		ACCIDENTS	Test Runs
																			85%	PACE		
1.3																						
1.2																						
1.1																						
1.0																						
0.9																						
0.8																						
0.7																						



TR 682 (F B EYE RD)
SPUR TO TR 682 (F B EYE RD)

OM-3R
OM-3L

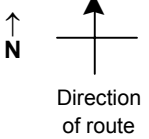
Edge of berm | 3 | 7 | Edge of pavement | 7 | 3 | Edge of berm

SPEED STUDY DATA SHEET

Date 09/27/06

County MUS

Municipality Muskingum County



Highway name & number 0045 (CUTLER LAKE RD)

Street classification STANDARD RURAL

Log point	* **		PHYSICAL CONDITION						* **		TRAFFIC CONTROL DEVICES			SPEED		ACCIDENTS	Test Runs	
														85%	PACE			
2.0			○															
					Y			○		R2-1-15				R1-1				
					Y					R1-1								
1.9					Y					OM-3R				OM-3L				
					Y					OM-3L				OM-3R				
					Y					TR 219 (DRAKE RD)				R2-1-15				
1.8																		
1.6			○															
1.5																		
1.4																		

Edge of berm | 3 | 7 | Edge of pavement | 7 | 3 | Edge of berm

SPEED STUDY DATA SHEET

 Date 09/27/06

 County MUS

 Municipality Muskingum County

 ↑
N

 Direction
of route

 Highway name & number 0045 (CUTLER LAKE RD)

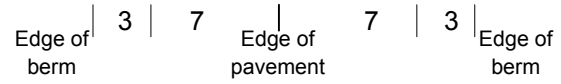
 Street classification STANDARD RURAL

Log point	* **	PHYSICAL CONDITION										* **	TRAFFIC CONTROL DEVICES					SPEED		ACCIDENTS	Test Runs
																		85%	PACE		
2.7																					
2.6													OM-3R	T		T	OM-3L				
2.6													OM-3L	T		b	OM-3R				
2.5																					
2.4													OM-3R	T			OM-3L				
2.4													OM-3L	T		b	OM-3R				
2.3																					
2.3													OM-3R	T		b	OM-3L				
2.3													OM-3L	T			OM-3R				
2.2																					
2.1																					
2.1																					

TR 79 (FLATS LN)

 TR 233 (FENTON RD)
SPUR TO TR 233 (FENTON RD)

TR 626 (STARRETT LN)



SPEED STUDY DATA SHEET

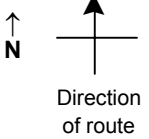
Date 09/27/06

County MUS

Municipality Muskingum County

Highway name & number 0045 (CUTLER LAKE RD)

Street classification STANDARD RURAL



Log point	* **		PHYSICAL CONDITION										* **		TRAFFIC CONTROL DEVICES				SPEED		ACCIDENTS	Test Runs		
																	85%	PACE						
3.4																								
3.3																								
3.2																								
3.1																								
3.0																								
2.9																								
2.8																								

W-203

TR 69 (WILSON RD)

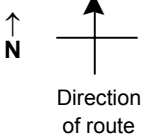
Edge of berm | 3 | 7 | Edge of pavement | 7 | 3 | Edge of berm

SPEED STUDY DATA SHEET

Date 09/27/06

County MUS

Municipality Muskingum County



Highway name & number 0045 (CUTLER LAKE RD)

Street classification STANDARD RURAL

Log point	* **		PHYSICAL CONDITION						* **		TRAFFIC CONTROL DEVICES			SPEED		ACCIDENTS	Test Runs
														85%	PACE		
4.1																	
4.0																	
3.9																	
3.8																	
3.7																	
3.6																	
3.5																	

TR 236 (IMLAY RD)

W13-1-20
W-203

W13-1-20
W-203

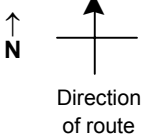
Edge of berm | 3 | 7 | Edge of pavement | 7 | 3 | Edge of berm

SPEED STUDY DATA SHEET

Date 09/27/06

County MUS

Municipality Muskingum County



Highway name & number 0045 (CUTLER LAKE RD)

Street classification STANDARD RURAL

Log point	* **		PHYSICAL CONDITION										* **		TRAFFIC CONTROL DEVICES				SPEED		ACCIDENTS	Test Runs						
															OM-3L				OM-3R	85%			PACE					
4.8																		OM-3L					OM-3R					
																								W5-3				
4.7																												
4.6																												
4.5																												
4.4																												
4.3																												
4.2																												

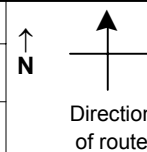
Edge of berm
3 | 7
Edge of pavement
7 | 3
Edge of berm

SPEED STUDY DATA SHEET

Date 09/27/06

County MUS

Municipality Muskingum County



Highway name & number 0045 (CUTLER LAKE RD)

Street classification STANDARD RURAL

Log point	*	**	PHYSICAL CONDITION						*	**	TRAFFIC CONTROL DEVICES				SPEED		ACCIDENTS	Test Runs
5.5										-	-	-	-					
5.4										-	-	-	-					
5.3			Y	CR 226 (BLUE ROCK CHURCH RD)		Y				T	-	T	R2-1-20					
										T	-	b	OM-3L					
										T	-	-	OM-3R					
										T	-	-	W1-2R					
5.2			Y	CR 226 (BUTTERMILK RD)						-	-	-	-					
5.1										-	-	-	-					
5.0			Y			Y				T	T	b	OM-3L					
							O			T	T	b	OM-3R					
										T	T	-	OM-3R					
4.9										T	-	-	OM-3L					

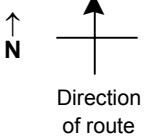
Edge of berm
3
7
Edge of pavement
7
3
Edge of berm

SPEED STUDY DATA SHEET

Date 09/27/06

County MUS

Municipality Muskingum County



Highway name & number 0045 (CUTLER LAKE RD)

Street classification STANDARD RURAL

Log point	* **		PHYSICAL CONDITION				* **		TRAFFIC CONTROL DEVICES				SPEED		ACCIDENTS	Test Runs	
													85%	PACE			
6.2																	
6.1																	
6.0																	
5.9																	
5.8																	
5.7																	
5.6																	

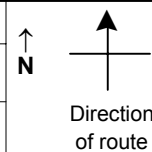
Edge of berm | 3 | 7 | Edge of pavement | 7 | 3 | Edge of berm

SPEED STUDY DATA SHEET

Date 09/27/06

County MUS

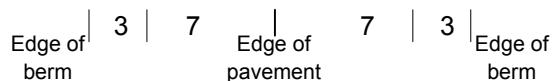
Municipality Muskingum County



Highway name & number 0045 (CUTLER LAKE RD)

Street classification STANDARD RURAL

Log point	* **	PHYSICAL CONDITION						* **	TRAFFIC CONTROL DEVICES				SPEED		ACCIDENTS	Test Runs	
													85%	PACE			
6.9										⋮							
6.8				⌞	═══════	⌞	○					T			T		
6.7										⋮							
6.6										⋮							
6.5										⋮							
6.4										⋮							
6.3				⌞	═══════	⌞						T			T		

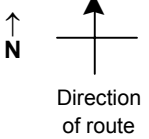


SPEED STUDY DATA SHEET

Date 09/27/06

County MUS

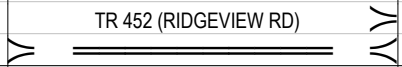
Municipality Muskingum County



Highway name & number 0045 (CUTLER LAKE RD)

Street classification STANDARD RURAL

Log point	* **		PHYSICAL CONDITION								* **		TRAFFIC CONTROL DEVICES				SPEED		ACCIDENTS	Test Runs
																	85%	PACE		
7.6																				
7.5												W13-1-20	T		T	W13-1-20				
												W1-5L	T		T	W1-5R				
7.4												W11-7	T		T					
												W11-7	T		T					
7.3												W5-3	T		T	R2-1-35				
												OM-3R	T		T	OM-3L				
												OM-3L	T		T	OM-3R				
												R2-1-35	T		T	W5-3				
7.2																				
7.1																				
7.0																				



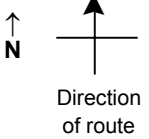
Edge of berm | 3 | 7 | Edge of pavement | 7 | 3 | Edge of berm

SPEED STUDY DATA SHEET

Date 09/27/06

County MUS

Municipality Muskingum County



Highway name & number 0045 (CUTLER LAKE RD)

Street classification STANDARD RURAL

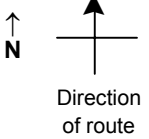
Log point	* **		PHYSICAL CONDITION										* **		TRAFFIC CONTROL DEVICES				SPEED		ACCIDENTS	Test Runs				
																	85%	PACE								
8.3																										
8.2															W5-2											
8.1																										
8.0																										
7.9															OM-3R OM-3L											
7.8																										
7.7																										

Edge of berm | 3 | 7 | Edge of pavement | 7 | 3 | Edge of berm

SPEED STUDY DATA SHEET

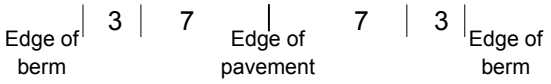
 Date 09/27/06

 County MUS

 Municipality Muskingum County

 Highway name & number 0045 (CUTLER LAKE RD)

 Street classification STANDARD RURAL

Log point	* **		PHYSICAL CONDITION										* **		TRAFFIC CONTROL DEVICES				SPEED		ACCIDENTS	Test Runs															
																							85%	PACE													
													○																								
9.0														R2-1-35	T					▲	W11-7																
																				▲	W13-1-15																
																				▲	S3-1																
																				▲	W1-1L																
8.9																																					
8.8																																					
8.7			○										○	OM-3R	T					▲	W1-3L																
														OM-3L	T				b		b		▲	OM-3L													
																					▲	OM-3R															
8.6																																					
8.5			○										○																								
8.4																																					

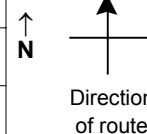


SPEED STUDY DATA SHEET

Date 09/27/06

County MUS

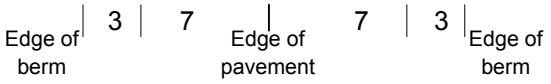
Municipality Muskingum County



Highway name & number 0045 (CUTLER LAKE RD)

Street classification STANDARD RURAL

Log point	* **	PHYSICAL CONDITION										* **	TRAFFIC CONTROL DEVICES				SPEED		ACCIDENTS	Test Runs
																	85%	PACE		
9.7																				
9.6																				
9.5																				
9.4																				
9.3																				
9.2																				
9.1																				



TR 383 (MOCK RD)

SPEED STUDY DATA SHEET

Date 09/27/06

County MUS

Municipality Muskingum County

↑
N



Direction
of route

Highway name & number 0045 (CUTLER LAKE RD)

Street classification STANDARD RURAL

Log point	*	**	PHYSICAL CONDITION					*	**	TRAFFIC CONTROL DEVICES			SPEED		ACCIDENTS	Test Runs
														85%		
10.4																
10.3																
10.2																
10.1																
10.0																
9.9																
9.8																

CR 97 (SUGAR GROVE RD) Y

TR 234 (POVERTY RIDGE RD)
SPUR TO TR 234 (POVERTY RIDGE)

R2-1-35 T
W13-1-25 T W13-1-15
W1-5L T W1-1L

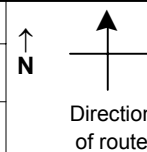
Edge of berm | 3 | 7 | Edge of pavement | 7 | 3 | Edge of berm

SPEED STUDY DATA SHEET

Date 09/27/06

County MUS

Municipality Muskingum County



Highway name & number 0045 (CUTLER LAKE RD)

Street classification STANDARD RURAL

Log point	* **		PHYSICAL CONDITION						* **		TRAFFIC CONTROL DEVICES			SPEED		ACCIDENTS	Test Runs
														85%	PACE		
11.1																	
11.0																	
10.9																	
10.8																	
10.7																	
10.6																	
10.5																	

Edge of berm | 3 | 7 | Edge of pavement | 7 | 3 | Edge of berm