

SPEED STUDY DATA SHEET

Date 09/26/06

County MUS

Municipality Muskingum County

↑
N



Direction
of route

Highway name & number 0046 (DARLINGTON DR)

Street classification STANDARD RURAL

Log point	* **		PHYSICAL CONDITION						* **		TRAFFIC CONTROL DEVICES			SPEED		ACCIDENTS	Test Runs	
														85%	PACE			
0.6																		
0.5																		
0.4																		
0.3																		
0.2																		
0.1																		
0.0																		

CR 74 (RESTLESS RD)



CR 32 (BAUGHMAN RUN RD)



R1-1



Edge of berm | 1 | 8 | Edge of pavement | 8 | 1 | Edge of berm

SPEED STUDY DATA SHEET

 Date 09/26/06

 County MUS

 Municipality Muskingum County

↑ N



Direction of route

 Highway name & number 0046 (DARLINGTON DR)

 Street classification STANDARD RURAL

Log point	* **		PHYSICAL CONDITION										* **		TRAFFIC CONTROL DEVICES			SPEED		ACCIDENTS	Test Runs
																		85%	PACE		
1.3																					
1.2																					
1.1																					
1.0																					
0.9																					
0.8																					
0.7																					

Edge of berm | 1 | 8 | Edge of pavement | 8 | 1 | Edge of berm

SPEED STUDY DATA SHEET

Date 09/26/06

County MUS

Municipality Muskingum County

↑
N

↑
Direction
of route

Highway name & number 0046 (DARLINGTON DR)

Street classification STANDARD RURAL

Log point	*	**	PHYSICAL CONDITION						*	**	TRAFFIC CONTROL DEVICES			SPEED		ACCIDENTS	Test Runs
													85%	PACE			
2.0																	
1.9										S3-1	T						
1.8			O														
1.7				Y													
				TR 264 (MAHON RD) TR 264 (YOST RD)				Y									
1.6																	
1.5																	
1.4																	

Edge of berm | 1 | 8 | Edge of pavement | 8 | 1 | Edge of berm

Sheet 3 of 7 sheets

SPEED STUDY DATA SHEET

Date 09/26/06

County MUS

Municipality Muskingum County

↑
N



Direction
of route

Highway name & number 0046 (DARLINGTON DR)

Street classification STANDARD RURAL

Log point	* **	PHYSICAL CONDITION										* **	TRAFFIC CONTROL DEVICES			SPEED		ACCIDENTS	Test Runs
																	85%		
2.7																			
2.6																			
2.5		○																	
		●																	
		○																	
2.4																			
2.3																			
2.2																			
2.1		○																	

OLD GLORY DR Y

W10-1

○₂

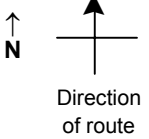
Edge of berm | 1 | 8 Edge of pavement | 8 | 1 Edge of berm

SPEED STUDY DATA SHEET

Date 09/26/06

County MUS

Municipality Muskingum County



Highway name & number 0046 (DARLINGTON DR)

Street classification STANDARD RURAL

Log point	* **		PHYSICAL CONDITION										* **		TRAFFIC CONTROL DEVICES			SPEED		ACCIDENTS	Test Runs	
															85%	PACE						
3.4																						
3.3																						
3.2																						
3.1																						
3.0																						
2.9																						
2.8																						

Edge of berm | 1 | 8 | Edge of pavement | 8 | 1 | Edge of berm

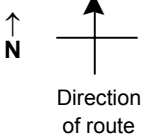
Sheet 5 of 7 sheets

SPEED STUDY DATA SHEET

Date 09/26/06

County MUS

Municipality Muskingum County



Highway name & number 0046 (DARLINGTON DR)

Street classification STANDARD RURAL

Log point	* **		PHYSICAL CONDITION										* **		TRAFFIC CONTROL DEVICES				SPEED		ACCIDENTS	Test Runs
																W13-1-25	W1-3L	85%	PACE			
4.1																						
4.0																						
3.9																						
3.8																						
3.7																						
3.6																						
3.5																						

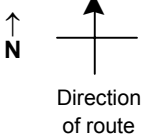
Edge of berm | 1 | 8 | Edge of pavement | 8 | 1 | Edge of berm

SPEED STUDY DATA SHEET

Date 09/26/06

County MUS

Municipality Muskingum County



Highway name & number 0046 (DARLINGTON DR)

Street classification STANDARD RURAL

Log point	* **		PHYSICAL CONDITION										* **		TRAFFIC CONTROL DEVICES					SPEED		ACCIDENTS	Test Runs				
																		85%	PACE								
4.8																											
4.7																											
4.6																											
4.5																											
4.4																											
4.3																											
4.2																											

Edge of berm | 1 | 8 | Edge of pavement | 8 | 1 | Edge of berm