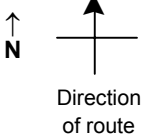


# SPEED STUDY DATA SHEET

Date 09/28/06

County MUS

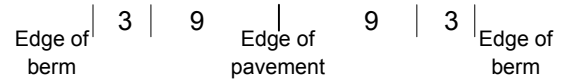
Municipality Muskingum County



Highway name & number 0047 (PLEASANT VALLEY RD)

Street classification STANDARD RURAL

Log point	* **		PHYSICAL CONDITION										* **		TRAFFIC CONTROL DEVICES				SPEED		ACCIDENTS	Test Runs
																			85%	PACE		
0.6																						
0.5																						
0.4																						
0.3																						
0.2																						
0.1																						
0.0																						



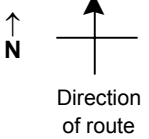
CR 8 (FLINT RIDGE RD)

# SPEED STUDY DATA SHEET

Date 09/28/06

County MUS

Municipality Muskingum County



Highway name & number 0047 (PLEASANT VALLEY RD)

Street classification STANDARD RURAL

Log point	* **		PHYSICAL CONDITION										* **		TRAFFIC CONTROL DEVICES				SPEED		ACCIDENTS	Test Runs
																	85%	PACE				
1.3																						
1.2																						
1.1																						
1.0																						
0.9																						
0.8																						
0.7																						

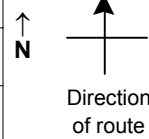
Edge of berm | 3 | 9 | Edge of pavement | 9 | 3 | Edge of berm

# SPEED STUDY DATA SHEET

Date 09/28/06

County MUS

Municipality Muskingum County



Highway name & number 0047 (PLEASANT VALLEY RD)

Street classification STANDARD RURAL

Log point	* **	PHYSICAL CONDITION												* **	TRAFFIC CONTROL DEVICES						SPEED		ACCIDENTS	Test Runs
																					85%	PACE		
2.0																								
1.9		●																						
1.8																								
1.7		○																						
1.6																								
1.5		○																						
1.4																								

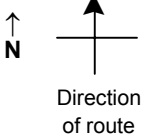
Edge of berm | 3 | 9 | Edge of pavement | 9 | 3 | Edge of berm

# SPEED STUDY DATA SHEET

Date 09/28/06

County MUS

Municipality Muskingum County



Highway name & number 0047 (PLEASANT VALLEY RD)

Street classification STANDARD RURAL

Log point	* **		PHYSICAL CONDITION										* **		TRAFFIC CONTROL DEVICES				SPEED		ACCIDENTS	Test Runs
																			85%	PACE		
2.7			⊕	∩	TR 291 (MACEDONIA RD)																	
2.6																						
2.5					CR 35 (PINECREST RD)						∩					▬	R2-1-35					
2.4													R2-1-35									
2.3																						
2.2													W11-H13/truck									
2.1																						

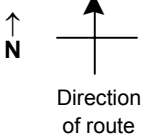
Edge of berm
3
9
Edge of pavement
9
3
Edge of berm

# SPEED STUDY DATA SHEET

Date 09/28/06

County MUS

Municipality Muskingum County



Highway name & number 0047 (PLEASANT VALLEY RD)

Street classification STANDARD RURAL

Log point	* **	PHYSICAL CONDITION						* **	TRAFFIC CONTROL DEVICES				SPEED		ACCIDENTS	Test Runs
													85%	PACE		
3.4																
3.3								W13-1-15	T			W13-1-15				
								W1-5L	T			W1-5L				
3.2																
3.1								W13-1-20	T							
								OM-3R	T			W1-8				
								W5-2	T							
								OM-3L	T			W1-8				
3.0								W1-8	T		o o o o	OM-3L				
								W1-8	T		o o o o	OM-3R				
												W13-1-20				
												W5-2				
2.9																
												W13-1-15				
												W1-5L				
2.8																

Edge of berm | 3 | 9 | Edge of pavement | 9 | 3 | Edge of berm

# SPEED STUDY DATA SHEET

Date 09/28/06

County MUS

Municipality Muskingum County

↑  
**N**



Direction  
of route

Highway name & number 0047 (PLEASANT VALLEY RD)

Street classification STANDARD RURAL

Log point	* **	PHYSICAL CONDITION						* **	TRAFFIC CONTROL DEVICES				SPEED		ACCIDENTS	Test Runs
													85%	PACE		
4.1																
4.0																
3.9																
3.8																
3.7																
3.6																
3.5																

TR 47 (PLEASANT VALLEY CH)

||  
||  
||  
||  
||  
||  
||  
||  
||  
||  
||  
||  
||  
||  
||  
||

Edge of berm | 3 | 9 | Edge of pavement | 9 | 3 | Edge of berm

Sheet 6 of 6 sheets