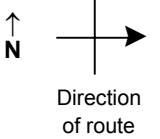


SPEED STUDY DATA SHEET

Date 10/04/06

County MUS

Municipality Muskingum County



Highway name & number 0049 (ELLIS DAM RD)

Street classification STANDARD RURAL

Log point	*	**	PHYSICAL CONDITION						*	**	TRAFFIC CONTROL DEVICES			SPEED		ACCIDENTS	Test Runs
														85%	PACE		
2.4																	
2.3																	
2.2																	
2.1																	
2.0																	
1.9																	
1.8			∩								T						

Edge of berm | 2 | 9 | Edge of pavement | 9 | 2 | Edge of berm

SPEED STUDY DATA SHEET

Date 10/04/06

County MUS

Municipality Muskingum County

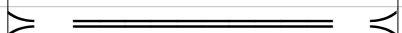


Highway name & number 0049 (ELLIS DAM RD)

Street classification STANDARD RURAL

Direction of route

Log point	* **		PHYSICAL CONDITION										* **		TRAFFIC CONTROL DEVICES				SPEED		ACCIDENTS	Test Runs		
																	85%	PACE						
3.1																								
3.0																								
2.9																								
2.8																								
2.7																								
2.6																								
2.5																								



TR 419 (BEECH RUN RD)

R1-1

R1-1

Edge of berm | 2 | 9 | Edge of pavement | 9 | 2 | Edge of berm

Sheet 2 of 3 sheets

SPEED STUDY DATA SHEET

Date 10/04/06

County MUS

Municipality Muskingum County



Highway name & number 0049 (ELLIS DAM RD)

Street classification STANDARD RURAL

Direction of route

Log point	*	**	PHYSICAL CONDITION						*	**	TRAFFIC CONTROL DEVICES			SPEED		ACCIDENTS	Test Runs	
			85%	PACE	R1-2	85%	PACE											
3.8																		
3.7																		
3.6																		
3.5																		
3.4													R1-2					
3.3																		
3.2																		

∩ TR 49 (ELLIS DAM RD)

|
|
|
|
|
|
|
|
|
|
|

Edge of berm | 2 | 9 | Edge of pavement | 9 | 2 | Edge of berm