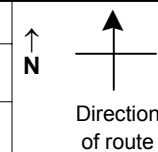


# SPEED STUDY DATA SHEET

Date 10/03/06

County MUS

Municipality Muskingum County



Highway name & number 0052 (SONORA RD)

Street classification STANDARD RURAL

Log point	* **	PHYSICAL CONDITION						* **	TRAFFIC CONTROL DEVICES				SPEED		ACCIDENTS	Test Runs
													85%	PACE		
							○			-						
0.6							○			-						
		○					○			-						
0.5		○					○			-						
		○					○			-						
0.4				Y	CR 108 (BOGGS RD)	Y				-						
								W1-8	+	-						
								M1-1 (70)	+	-						
								W1-8	+	-						
								M2-1	+	-						
									+	-						
0.3									+	-						
		●			ALL AMERICAN WAY	Y			+	-						
0.2				Y	RAMPS TO I 70	Y		M2-1	+	-						
								M1-4 (40)	+	-						
								M1-4 (22)	+	-						
0.1								OM-3R	+	-						
									+	-						
				Y	RAMP TO I 70	Y		OM-3L	+	-						
0.0									+	-						
								OM-3L	+	-						

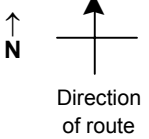
Edge of berm | 2 | 9 | Edge of pavement | 9 | 2 | Edge of berm

Sheet 1 of 3 sheets

# SPEED STUDY DATA SHEET

 Date 10/03/06

 County MUS

 Municipality Muskingum County

 Highway name & number 0052 (SONORA RD)

 Street classification STANDARD RURAL

Log point	* **	PHYSICAL CONDITION				* **	TRAFFIC CONTROL DEVICES			SPEED		ACCIDENTS	Test Runs
										85%	PACE		
				Y	THE OLD COUNTRY LN								
1.3													
1.2				X	+++++	X							
1.1													
1.0													
0.9													
0.8				Y	=====	Y							
0.7				Y	LECTRIC LN	Y							

Edge of berm | 2 | 9 | Edge of pavement | 9 | 2 | Edge of berm

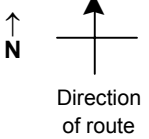
Sheet  2  of  3  sheets

# SPEED STUDY DATA SHEET

Date 10/03/06

County MUS

Municipality Muskingum County



Highway name & number 0052 (SONORA RD)

Street classification STANDARD RURAL

Log point	*	**	PHYSICAL CONDITION						*	**	TRAFFIC CONTROL DEVICES			SPEED		ACCIDENTS	Test Runs
														85%	PACE		
2.0																	
1.9																	
1.8																	
1.7																	
1.6																	
1.5																	
1.4																	

CR 64 (NORFIELD RD)

R2-1-35

R1-1

WEBSTER ST

CENTER ST

MAIN ST

Edge of berm | 2 | 9 | Edge of pavement | 9 | 2 | Edge of berm