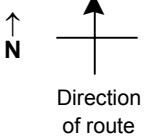


# SPEED STUDY DATA SHEET

Date 10/04/06

County MUS

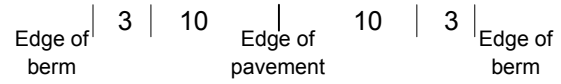
Municipality Muskingum County



Highway name & number 0056 (SHANNON VALLEY RD)

Street classification STANDARD RURAL

Log point	* **		PHYSICAL CONDITION										* **		TRAFFIC CONTROL DEVICES				SPEED		ACCIDENTS	Test Runs
															85%	PACE						
0.6			○																			
0.5			TR 120 (GAUSE RD)																			
0.4																						
0.3																						
0.2																						
0.1																						
0.0			SR 146																			



# SPEED STUDY DATA SHEET

Date 10/04/06

County MUS

Municipality Muskingum County

↑  
**N**



Direction  
of route

Highway name & number 0056 (SHANNON VALLEY RD)

Street classification STANDARD RURAL

Log  
point

Log point	*	**	PHYSICAL CONDITION							* **	TRAFFIC CONTROL DEVICES				SPEED		ACCIDENTS	Test Runs
														85%	PACE			
1.3																		
1.2																		
1.1																		
1.0																		
0.9																		
0.8																		
0.7																		

Edge of berm | 3 | 10 | Edge of pavement | 10 | 3 | Edge of berm

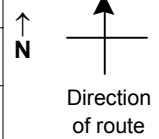
Sheet 2 of 5 sheets

# SPEED STUDY DATA SHEET

Date 10/04/06

County MUS

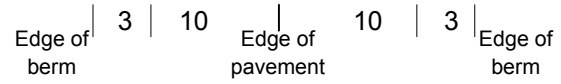
Municipality Muskingum County



Highway name & number 0056 (SHANNON VALLEY RD)

Street classification STANDARD RURAL

Log point	*	**	PHYSICAL CONDITION						*	**	TRAFFIC CONTROL DEVICES			SPEED		ACCIDENTS	Test Runs
											85%	PACE					
2.0			○														
1.9																	
1.8			○														
1.7			○	○													
1.6			○														
1.5			○														
1.4										T	W1-2R	T	W1-8				
												T	W1-8				
												T	W1-8				
												T	W1-8				
												T	W1-8				

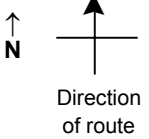


# SPEED STUDY DATA SHEET

Date 10/04/06

County MUS

Municipality Muskingum County



Highway name & number 0056 (SHANNON VALLEY RD)

Street classification STANDARD RURAL

Log point	* **		PHYSICAL CONDITION										* **		TRAFFIC CONTROL DEVICES				SPEED		ACCIDENTS	Test Runs	
			85%	PACE																			
2.7			○																				
2.6			○								○											▬ R2-1-40	
2.5			○		CRANBERRY LN	Y					○											▬ R2-1-40	
2.2			○																				
2.1			○																				

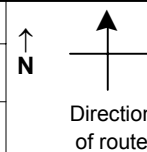
Edge of berm | 3 | 10 | Edge of pavement | 10 | 3 | Edge of berm

# SPEED STUDY DATA SHEET

Date 10/04/06

County MUS

Municipality Muskingum County



Highway name & number 0056 (SHANNON VALLEY RD)

Street classification STANDARD RURAL

Log point	*	**	PHYSICAL CONDITION						*	**	TRAFFIC CONTROL DEVICES			SPEED		ACCIDENTS	Test Runs
														85%	PACE		
3.4																	
3.3																	
3.2																	
3.1																	
3.0																	
2.9																	
2.8																	

