

SPEED STUDY DATA SHEET

Date 09/26/06

County MUS

Municipality Muskingum County

↑
N



Direction
of route

Highway name & number 0059 (HIGH HILL RD)

Street classification STANDARD RURAL

Log point	*	**	PHYSICAL CONDITION										*	**	TRAFFIC CONTROL DEVICES			SPEED		ACCIDENTS	Test Runs		
																		85%	PACE				
0.6																							
0.5																							
0.4																							
0.3																							
0.2																							
0.1																							
0.0																							

Edge of berm | 2 | 8 | Edge of pavement | 8 | 2 | Edge of berm
2' 8" 8' 2'

SPEED STUDY DATA SHEET

Date 09/26/06

County MUS

Municipality Muskingum County

↑
N



Direction
of route

Highway name & number 0059 (HIGH HILL RD)

Street classification STANDARD RURAL

Log point	*	**	PHYSICAL CONDITION						*	**	TRAFFIC CONTROL DEVICES			SPEED		ACCIDENTS	Test Runs
1.3																	
1.2																	
1.1																	
1.0																	
0.9																	
0.8																	
0.7																	

TR 226 (BLUE ROCK CHURCH RD)

TR 224 (OAKLAND RD)

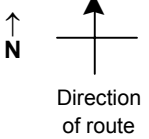
Edge of berm | 2 | 8 | Edge of pavement | 8 | 2 | Edge of berm

SPEED STUDY DATA SHEET

Date 09/26/06

County MUS

Municipality Muskingum County



Highway name & number 0059 (HIGH HILL RD)

Street classification STANDARD RURAL

Log point	*	**	PHYSICAL CONDITION								*	**	TRAFFIC CONTROL DEVICES				SPEED		ACCIDENTS	Test Runs
																	85%	PACE		
2.0																				
1.9																				
1.8																				
1.7																				
1.6																				
1.5																				
1.4																				

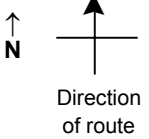
Edge of berm | 2 | 8 | Edge of pavement | 8 | 2 | Edge of berm

SPEED STUDY DATA SHEET

Date 09/26/06

County MUS

Municipality Muskingum County



Highway name & number 0059 (HIGH HILL RD)

Street classification STANDARD RURAL

Log point	*	**	PHYSICAL CONDITION								*	**	TRAFFIC CONTROL DEVICES				SPEED		ACCIDENTS	Test Runs
			85%	PACE																
2.7																				
2.6			↑																	
2.5																				
2.4																				
2.3																				
2.2																				
2.1																				

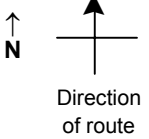
Edge of berm | 2 | 8 | Edge of pavement | 8 | 2 | Edge of berm

SPEED STUDY DATA SHEET

Date 09/26/06

County MUS

Municipality Muskingum County



Highway name & number 0059 (HIGH HILL RD)

Street classification STANDARD RURAL

Log point	*	**	PHYSICAL CONDITION						*	**	TRAFFIC CONTROL DEVICES			SPEED		ACCIDENTS	Test Runs
			8	8	2	8	8	2			85%	PACE					
3.4																	
3.3																	
3.2																	
3.1																	
3.0																	
2.9																	
2.8											 	R1-1					

