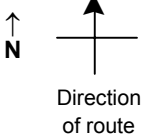


SPEED STUDY DATA SHEET

Date 09/27/06

County MUS

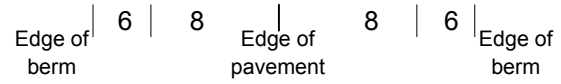
Municipality Muskingum County



Highway name & number 0061 (ZION RIDGE RD)

Street classification STANDARD RURAL

Log point	*	**	PHYSICAL CONDITION						*	**	TRAFFIC CONTROL DEVICES			SPEED		ACCIDENTS	Test Runs
														85%	PACE		
0.6																	
0.5																	
0.4																	
0.3																	
0.2																	
0.1																	
0.0																	



R2-1-45

R1-1

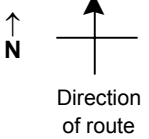
SR 284

SPEED STUDY DATA SHEET

Date 09/27/06

County MUS

Municipality Muskingum County



Highway name & number 0061 (ZION RIDGE RD)

Street classification STANDARD RURAL

Log point	*	**	PHYSICAL CONDITION								*	**	TRAFFIC CONTROL DEVICES				SPEED		ACCIDENTS	Test Runs
																	85%	PACE		
1.3																				
1.2																				
1.1																				
1.0																				
0.9																				
0.8																				
0.7																				

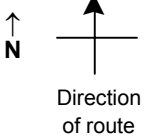
Edge of berm | 6 | 8 | Edge of pavement | 8 | 6 | Edge of berm

SPEED STUDY DATA SHEET

Date 09/27/06

County MUS

Municipality Muskingum County



Highway name & number 0061 (ZION RIDGE RD)

Street classification STANDARD RURAL

Log point	*	**	PHYSICAL CONDITION										*	**	TRAFFIC CONTROL DEVICES				SPEED		ACCIDENTS	Test Runs	
			85%		PACE																		
2.0																							
1.9																							
1.8																							
1.7																							
1.6																							
1.5																							
1.4																							

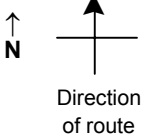
Edge of berm | 6 | 8 | Edge of pavement | 8 | 6 | Edge of berm

SPEED STUDY DATA SHEET

Date 09/27/06

County MUS

Municipality Muskingum County



Highway name & number 0061 (ZION RIDGE RD)

Street classification STANDARD RURAL

Log point	* **		PHYSICAL CONDITION						* **		TRAFFIC CONTROL DEVICES				SPEED		ACCIDENTS	Test Runs
															85%	PACE		
2.7											W13-1-20	T						
											W1-5R	T						
2.6																		
														R2-1-45				
2.5																		
2.4																		
2.3																		
2.2																		
											R2-1-45	T						
2.1																		
														W13-1-20				
														W1-5L				

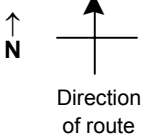
Edge of berm | 6 | 8 | Edge of pavement | 8 | 6 | Edge of berm

SPEED STUDY DATA SHEET

Date 09/27/06

County MUS

Municipality Muskingum County



Highway name & number 0061 (ZION RIDGE RD)

Street classification STANDARD RURAL

Log point	*	**	PHYSICAL CONDITION								*	**	TRAFFIC CONTROL DEVICES				SPEED		ACCIDENTS	Test Runs
			85%		PACE															
3.4																				
3.3																				
3.2																				
3.1																				
3.0																				
2.9																				
2.8																				

Edge of berm | 6 | 8
Edge of pavement | 8 | 6
Edge of berm

