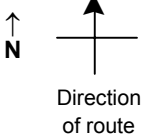


SPEED STUDY DATA SHEET

Date 09/27/06

County MUS

Municipality Muskingum County



Highway name & number 0063 (HIGH FREELAND RD)

Street classification STANDARD RURAL

Log point	* **		PHYSICAL CONDITION										* **		TRAFFIC CONTROL DEVICES				SPEED		ACCIDENTS	Test Runs
																			85%	PACE		
0.6																						
0.5																						
0.4																						
0.3																						
0.2																						
0.1																						
0.0																						

Edge of berm | 2 | 7 | Edge of pavement | 7 | 2 | Edge of berm

SR 284

SPEED STUDY DATA SHEET

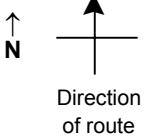
Date 09/27/06

County MUS

Municipality Muskingum County

Highway name & number 0063 (HIGH FREELAND RD)

Street classification STANDARD RURAL



Log point	*	**	PHYSICAL CONDITION							*	**	TRAFFIC CONTROL DEVICES			SPEED		ACCIDENTS	Test Runs
															85%	PACE		
1.3																		
1.2																		
1.1																		
1.0																		
0.9																		
0.8																		
0.7																		

Edge of berm | 2 | 7 | Edge of pavement | 7 | 2 | Edge of berm

SPEED STUDY DATA SHEET

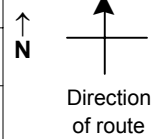
Date 09/27/06

County MUS

Municipality Muskingum County

Highway name & number 0063 (HIGH FREELAND RD)

Street classification STANDARD RURAL



Log point	*	**	PHYSICAL CONDITION							*	**	TRAFFIC CONTROL DEVICES			SPEED		ACCIDENTS	Test Runs
2.0																		
1.9																		
1.8			○															
1.7																		
1.6			○															
1.5																		
1.4																		

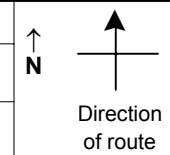
Edge of berm
2 | 7
Edge of pavement
7 | 2
Edge of berm

SPEED STUDY DATA SHEET

Date 09/27/06

County MUS

Municipality Muskingum County



Highway name & number 0063 (HIGH FREELAND RD)

Street classification STANDARD RURAL

Log point	***		PHYSICAL CONDITION										***		TRAFFIC CONTROL DEVICES			SPEED		ACCIDENTS	Test Runs				
	* **		1	2	3	4	5	6	7	8	9	10	11	12	13	14	15	16	85%			PACE			
2.7														○											
2.6														○											
2.5														○				=							
2.4														○											
2.3														○											
2.2														○											
2.1														○											

TR 453 (FOUND RD)

TR 371 (NELLIE LN)

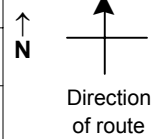
Edge of berm | 2 | 7 | Edge of pavement | 7 | 2 | Edge of berm

SPEED STUDY DATA SHEET

Date 09/27/06

County MUS

Municipality Muskingum County



Highway name & number 0063 (HIGH FREELAND RD)

Street classification STANDARD RURAL

Log point	* **		PHYSICAL CONDITION										* **		TRAFFIC CONTROL DEVICES			SPEED		ACCIDENTS	Test Runs
																			85%		
3.4																					
3.3																					
3.2																					
3.1																					
3.0																					
2.9																					
2.8																					

Edge of berm | 2 | 7 | Edge of pavement | 7 | 2 | Edge of berm