

SPEED STUDY DATA SHEET

Date 09/27/06

County MUS

Municipality Muskingum County

↑
N



Direction
of route

Highway name & number 0065 (SUNFLOWER RD)

Street classification STANDARD RURAL

Log point	*	**	PHYSICAL CONDITION						*	**	TRAFFIC CONTROL DEVICES			SPEED		ACCIDENTS	Test Runs
0.6																	
0.5																	
0.4																	
0.3																	
0.2																	
0.1																	
0.0																	

ad

W11-5

R1-1

CR 55 (RIX MILLS RD)

Edge of berm | 2 | 7 | Edge of pavement | 7 | 2 | Edge of berm

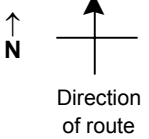
Sheet 1 of 6 sheets

SPEED STUDY DATA SHEET

Date 09/27/06

County MUS

Municipality Muskingum County



Highway name & number 0065 (SUNFLOWER RD)

Street classification STANDARD RURAL

Log point	* **		PHYSICAL CONDITION										* **		TRAFFIC CONTROL DEVICES				SPEED		ACCIDENTS	Test Runs		
			85%		PACE																			
1.3																								
1.2																								
1.1																								
1.0																								
0.9																								
0.8																								
0.7																								

TR 630 (SIMS LN)

OM-3R
OM-3L
OM-3L
OM-3R
W5-3

Edge of berm | 2 | 7 | Edge of pavement | 7 | 2 | Edge of berm

Sheet 2 of 6 sheets

SPEED STUDY DATA SHEET

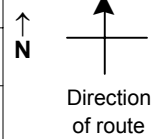
Date 09/27/06

County MUS

Municipality Muskingum County

Highway name & number 0065 (SUNFLOWER RD)

Street classification STANDARD RURAL



Log point	*	**	PHYSICAL CONDITION							*	**	TRAFFIC CONTROL DEVICES			SPEED		ACCIDENTS	Test Runs
2.0																		
1.9																		
1.8																		
1.7																		
1.6																		
1.5																		
1.4																		

∩ TR 631 (FAYE LN) ○

Edge of berm | 2 | 7 | Edge of pavement | 7 | 2 | Edge of berm

SPEED STUDY DATA SHEET

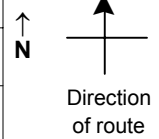
Date 09/27/06

County MUS

Municipality Muskingum County

Highway name & number 0065 (SUNFLOWER RD)

Street classification STANDARD RURAL



Log point	* **		PHYSICAL CONDITION										* **		TRAFFIC CONTROL DEVICES				SPEED		ACCIDENTS	Test Runs
																			85%	PACE		
3.4																						
3.3																						
3.2																						
3.1																						
3.0																						
2.9																						
2.8																						

Edge of berm
2 | 7
Edge of pavement
7 | 2
Edge of berm

