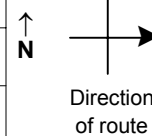


SPEED STUDY DATA SHEET

Date 09/26/06

County MUS

Municipality Muskingum County



Highway name & number 0066 (VIRGINIA RIDGE RD)

Street classification STANDARD RURAL

Log point	* **		PHYSICAL CONDITION										* **		TRAFFIC CONTROL DEVICES				SPEED		ACCIDENTS	Test Runs
																			85%	PACE		
0.6			○																			
0.5			○								○											
0.4			○																			
0.3			○																			
0.2			○																			
0.1			○																			
0.0			○																			

Edge of berm | 2 | 9
Edge of pavement | 9 | 2
Edge of berm

Sheet 1 of 6 sheets

SPEED STUDY DATA SHEET

Date 09/26/06

County MUS

Municipality Muskingum County



Highway name & number 0066 (VIRGINIA RIDGE RD)

Street classification STANDARD RURAL

Log point	* **		PHYSICAL CONDITION										* **		TRAFFIC CONTROL DEVICES				SPEED		ACCIDENTS	Test Runs				
			85%		PACE																					
1.3															S3-1	T										
1.2																		S3-1								
1.1																										
1.0																										
0.9																										
0.8																		S3-1								
0.7																										

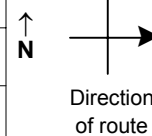
Edge of berm | 2 | 9 | Edge of pavement | 9 | 2 | Edge of berm

SPEED STUDY DATA SHEET

Date 09/26/06

County MUS

Municipality Muskingum County



Highway name & number 0066 (VIRGINIA RIDGE RD)

Street classification STANDARD RURAL

Log point	* **		PHYSICAL CONDITION										* **		TRAFFIC CONTROL DEVICES				SPEED		ACCIDENTS	Test Runs		
																	85%	PACE						
2.0																								
1.9																								
1.8																								
1.7																								
1.6																								
1.5																								
1.4																								

Edge of berm | 2 | 9 | Edge of pavement | 9 | 2 | Edge of berm

SPEED STUDY DATA SHEET

Date 09/26/06

County MUS

Municipality Muskingum County



Highway name & number 0066 (VIRGINIA RIDGE RD)

Street classification STANDARD RURAL

Direction of route

Log point	* **		PHYSICAL CONDITION						* **		TRAFFIC CONTROL DEVICES			SPEED		ACCIDENTS	Test Runs
														85%	PACE		
2.7																	
2.6																	
2.5																	
2.4																	
2.3																	
2.2																	
2.1																	

Edge of berm | 2 | 9 | Edge of pavement | 9 | 2 | Edge of berm

SPEED STUDY DATA SHEET

Date 09/26/06

County MUS

Municipality Muskingum County



Highway name & number 0066 (VIRGINIA RIDGE RD)

Street classification STANDARD RURAL

Log point	* **		PHYSICAL CONDITION										* **		TRAFFIC CONTROL DEVICES				SPEED		ACCIDENTS	Test Runs	
			85%		PACE																		
3.4																							
3.3																							
3.2																							
3.1																							
3.0																							
2.9																							
2.8																							

Edge of berm | 2 | 9 | Edge of pavement | 9 | 2 | Edge of berm

SPEED STUDY DATA SHEET

Date 09/26/06

County MUS

Municipality Muskingum County



Highway name & number 0066 (VIRGINIA RIDGE RD)

Street classification STANDARD RURAL

Log point	* **		PHYSICAL CONDITION										* **		TRAFFIC CONTROL DEVICES				SPEED		ACCIDENTS	Test Runs		
																	85%	PACE						
4.1																								
4.0																								
3.9																								
3.8																								
3.7																								
3.6																								
3.5																								

* END COUNTY ROAD *

|
|
|
|
|
|
|
|
|

Edge of berm | 2 | 9 Edge of pavement | 9 | 2 Edge of berm