

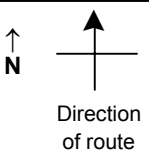


# SPEED STUDY DATA SHEET

Date 10/03/06

County MUS

Municipality Muskingum County



Highway name & number 0067 (BALD HILL RD)

Street classification STANDARD RURAL

Log point

* **	PHYSICAL CONDITION							* **	TRAFFIC CONTROL DEVICES				SPEED		ACCIDENTS	Test Runs
	85%	PACE														
1.3									W13-1-20	↑	R2-1-35					
1.2									W1-5R	↑						
1.1				∩												
1.0	○						○									
0.9	○						○				↑	W13-1-20				
0.8	○						○				↑	W1-5L				
0.7	○						○									

Edge of berm | 2 | 9 | Edge of pavement | 9 | 2 | Edge of berm

Sheet 2 of 4 sheets

# SPEED STUDY DATA SHEET

 Date 10/03/06

 County MUS

 Municipality Muskingum County

 Highway name & number 0067 (BALD HILL RD)

 Street classification STANDARD RURAL

 ↑  
N


Direction of route

Log point	* **		PHYSICAL CONDITION										* **		TRAFFIC CONTROL DEVICES					SPEED		ACCIDENTS	Test Runs
2.0																							
1.9																							
1.8																							
1.7																							
1.6																							
1.5																							
1.4																							

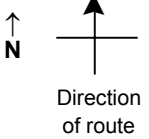
Edge of berm | 2 | 9      Edge of pavement | 9 | 2      Edge of berm

# SPEED STUDY DATA SHEET

Date 10/03/06

County MUS

Municipality Muskingum County



Highway name & number 0067 (BALD HILL RD)

Street classification STANDARD RURAL

Log point	*	**	PHYSICAL CONDITION						*	**	TRAFFIC CONTROL DEVICES			SPEED		ACCIDENTS	Test Runs
														85%	PACE		
2.7																	
2.6																	
2.5																	
2.4																	
2.3																	
2.2																	
2.1			○	X	+++++	X							R1-1				

