

SPEED STUDY DATA SHEET

Date 10/03/06

County MUS

Municipality Muskingum County



Direction of route

Highway name & number 0067 (PIPER RD)

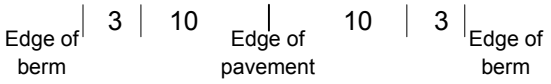
Street classification STANDARD RURAL

Log point	* **		PHYSICAL CONDITION					* **		TRAFFIC CONTROL DEVICES			SPEED		ACCIDENTS	Test Runs
												85%	PACE			
0.6																
0.5																
0.4																
0.3																
0.2																
0.1																
0.0																

O2

W-203

T



CR 64 (NORFIELD RD)

R1-1

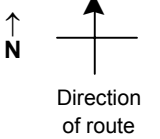
T

R-94/15 Ton

SPEED STUDY DATA SHEET

 Date 10/03/06

 County MUS

 Municipality Muskingum County

 Highway name & number 0067 (PIPER RD)

 Street classification STANDARD RURAL

Log point	* **	PHYSICAL CONDITION							* **	TRAFFIC CONTROL DEVICES			SPEED		ACCIDENTS	Test Runs
													85%	PACE		
1.3					λ	CR 269 (DOSCH RD)					-					
1.2		○									-					
1.1		○						○			-					
1.0		○						○			-					
0.9		○	○					○			-					
0.8		○					λ	○			-					
0.7		○								S3-1	T					

Edge of berm | 3 | 10 | Edge of pavement | 10 | 3 | Edge of berm

Sheet 2 of 6 sheets

SPEED STUDY DATA SHEET

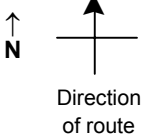
Date 10/03/06

County MUS

Municipality Muskingum County

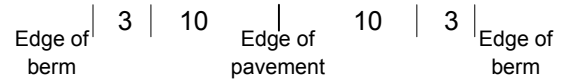
Highway name & number 0067 (PIPER RD)

Street classification STANDARD RURAL



Log point	*	**	PHYSICAL CONDITION						*	**	TRAFFIC CONTROL DEVICES			SPEED		ACCIDENTS	Test Runs
														85%	PACE		
2.0																	
1.9																	
1.8																	
1.7																	
1.6																	
1.5																	
1.4								○									

TR 183 (LEEDOM HOLLOW RD) Y

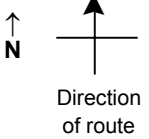


SPEED STUDY DATA SHEET

Date 10/03/06

County MUS

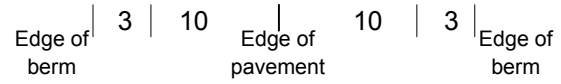
Municipality Muskingum County



Highway name & number 0067 (PIPER RD)

Street classification STANDARD RURAL

Log point	* **		PHYSICAL CONDITION										* **		TRAFFIC CONTROL DEVICES					SPEED		ACCIDENTS	Test Runs				
																				85%	PACE						
2.7																											
2.6			<div style="display: flex; justify-content: space-between; align-items: center;"> CR 258 (WEST RD) </div>												R-94/15 Ton	T		T	R1-1								
															OM-3R	T		T	OM-3L								
															OM-3L	T		T	OM-3R								
																	R-94/15 Ton	T		T	R-94/15 Ton						
2.5																											
2.4			<div style="display: flex; justify-content: space-between; align-items: center;"> TR 111 (TUCKER RD) </div>														S3-1	T		T	W8-H17						
2.3																											
2.2																											
2.1																											

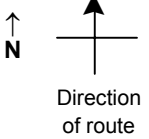


SPEED STUDY DATA SHEET

Date 10/03/06

County MUS

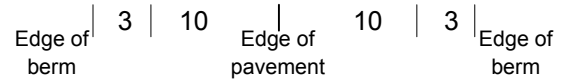
Municipality Muskingum County



Highway name & number 0067 (PIPER RD)

Street classification STANDARD RURAL

Log point	* **		PHYSICAL CONDITION										* **		TRAFFIC CONTROL DEVICES				SPEED		ACCIDENTS	Test Runs		
																	85%	PACE						
3.4																								
3.3																								
3.2																								
3.1																								
3.0																								
2.9																								
2.8																								



SPEED STUDY DATA SHEET

Date 10/03/06

County MUS

Municipality Muskingum County

↑ N



Direction of route

Highway name & number 0067 (PIPER RD)

Street classification STANDARD RURAL

Log point	* **	PHYSICAL CONDITION						* **	TRAFFIC CONTROL DEVICES			SPEED		ACCIDENTS	Test Runs
												85%	PACE		
4.1															
4.0															
3.9															
3.8															
3.7															
3.6															
3.5															

SR 93

R-94A/15 Ton R1-1



Edge of berm 3 10 Edge of pavement 10 3 Edge of berm

Sheet 6 of 6 sheets