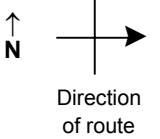


# SPEED STUDY DATA SHEET

Date 10/03/06

County MUS

Municipality Muskingum County



Highway name & number 0070 (STONE CHURCH RD)

Street classification STANDARD RURAL

Log point	*	**	PHYSICAL CONDITION						*	**	TRAFFIC CONTROL DEVICES			SPEED		ACCIDENTS	Test Runs
														85%	PACE		
0.6																	
0.5																	
0.4																	
0.3																	
0.2																	
0.1																	
0.0																	

CR 50 (STILLWELL RD)  
 SPUR TO CR 50 (STILLWELL RD)

Edge of berm | 5 | 13 | Edge of pavement | 13 | 5 | Edge of berm

# SPEED STUDY DATA SHEET

Date 10/03/06

County MUS

Municipality Muskingum County



Highway name & number 0070 (STONE CHURCH RD)

Street classification STANDARD RURAL

Direction of route

Log point	*	**	PHYSICAL CONDITION										*	**	TRAFFIC CONTROL DEVICES				SPEED		ACCIDENTS	Test Runs		
			85%	PACE																				
1.3																								
1.2																								
1.1																								
1.0																								
0.9																								
0.8																								
0.7																								

TR 160 (BETHESDA CHURCH RD) Y

CR 114 (KEYES RD) Y

SPUR TO CR 114 (KEYES RD) Y

R1-1

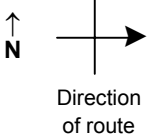
Edge of berm | 5 | 13 | Edge of pavement | 13 | 5 | Edge of berm

# SPEED STUDY DATA SHEET

Date 10/03/06

County MUS

Municipality Muskingum County



Highway name & number 0070 (STONE CHURCH RD)

Street classification STANDARD RURAL

Log point	*	**	PHYSICAL CONDITION						*	**	TRAFFIC CONTROL DEVICES			SPEED		ACCIDENTS	Test Runs
														85%	PACE		
2.0																	
1.9																	
1.8																	
1.7																	
1.6																	
1.5																	
1.4																	

∩ TR 163 (TITUS RD)

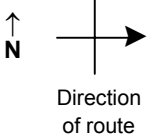
Edge of berm | 5 | 13 | Edge of pavement | 13 | 5 | Edge of berm

# SPEED STUDY DATA SHEET

Date 10/03/06

County MUS

Municipality Muskingum County



Highway name & number 0070 (STONE CHURCH RD)

Street classification STANDARD RURAL

Log point	* **		PHYSICAL CONDITION										* **		TRAFFIC CONTROL DEVICES				SPEED		ACCIDENTS	Test Runs			
																	85%	PACE							
2.7																									
2.6			○																						
2.5																	CR 13 (YEARLY RD)1	Y							
2.4																									
2.3																									
2.2																									
2.1																									

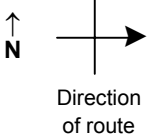
Edge of berm | 5 | 13 | Edge of pavement | 13 | 5 | Edge of berm

# SPEED STUDY DATA SHEET

Date 10/03/06

County MUS

Municipality Muskingum County



Highway name & number 0070 (STONE CHURCH RD)

Street classification STANDARD RURAL

Log point	*	**	PHYSICAL CONDITION						*	**	TRAFFIC CONTROL DEVICES			SPEED		ACCIDENTS	Test Runs
3.4					∩	PRIVATE HAUL RD											
3.3																	
3.2																	
3.1																	
3.0																	
2.9					∩	TR 163 ( PEAR ORCHARD RD )											
2.8																	

Edge of berm
5
13
Edge of pavement
13
5
Edge of berm

# SPEED STUDY DATA SHEET

Date 10/03/06

County MUS

Municipality Muskingum County



Highway name & number 0070 (STONE CHURCH RD)

Street classification STANDARD RURAL

Direction of route

Log point	* **		PHYSICAL CONDITION								* **		TRAFFIC CONTROL DEVICES				SPEED		ACCIDENTS	Test Runs
																	85%	PACE		
4.1																				
4.0			*		BEG CR 430		*													
3.9																				
3.8																				
3.7																				
3.6																				
3.5																				

Edge of berm | 5 | 13 | Edge of pavement | 13 | 5 | Edge of berm