

SPEED STUDY DATA SHEET

Date 10/04/06

County MUS

Municipality Muskingum County

↑ N



Direction of route

Highway name & number 0076 (NARROWS RD)

Street classification STANDARD RURAL

Log point

Log point	* **	PHYSICAL CONDITION						* **	TRAFFIC CONTROL DEVICES				SPEED		ACCIDENTS	Test Runs
													85%	PACE		
0.6							○				W1-5L					
0.5		○					○			T	W1-5L					
0.4		○														
0.3		○					○			T	S3-1					
0.2							○									
0.1		○														
0.0		○					○			T	R1-1					
											W1-5R					
											R2-1-35					

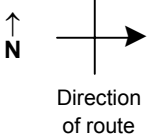
Edge of berm | 3 | 9 | Edge of pavement | 9 | 3 | Edge of berm

SPEED STUDY DATA SHEET

Date 10/04/06

County MUS

Municipality Muskingum County



Highway name & number 0076 (NARROWS RD)

Street classification STANDARD RURAL

Log point	* **		PHYSICAL CONDITION												* **		TRAFFIC CONTROL DEVICES				SPEED		ACCIDENTS		Test Runs
																	85%	PACE							
1.3																									
1.2																									
1.1																									
1.0																									
0.9																									
0.8																									
0.7																									

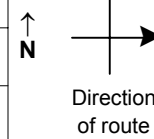
Edge of berm | 3 | 9 | Edge of pavement | 9 | 3 | Edge of berm

SPEED STUDY DATA SHEET

Date 10/04/06

County MUS

Municipality Muskingum County



Highway name & number 0076 (NARROWS RD)

Street classification STANDARD RURAL

Log point	* **			PHYSICAL CONDITION	* **			TRAFFIC CONTROL DEVICES		SPEED		ACCIDENTS	Test Runs
										85%	PACE		
2.0				<p>CR 301 (MOORE RD)</p>					<p>R2-1-35</p>				
1.9								<p>R2-1-35</p>	<p>W1-5R</p>				
1.8									<p>W1-5L</p>				
1.7									<p>OM-3R</p>	<p>OM-3L</p>			
1.6								<p>OM-3L</p>	<p>OM-3R</p>				
1.5								<p>Equip Xing</p>					
1.4													

Edge of berm | 3 | 9 | Edge of pavement | 9 | 3 | Edge of berm

Sheet 3 of 8 sheets

SPEED STUDY DATA SHEET

Date 10/04/06

County MUS

Municipality Muskingum County



Highway name & number 0076 (NARROWS RD)

Street classification STANDARD RURAL

Direction of route

Log point	* **		PHYSICAL CONDITION									* **		TRAFFIC CONTROL DEVICES			SPEED		ACCIDENTS	Test Runs		
																	85%	PACE				
2.7												○										
2.6												○ ₂			W1-5R	T				W1-3R		
2.5												○										
2.4																						
2.3												○										
2.2												○										
2.1																				S3-1		
												○										
																				S3-1		

Edge of berm | 3 | 9 | Edge of pavement | 9 | 3 | Edge of berm

Sheet 4 of 8 sheets

SPEED STUDY DATA SHEET

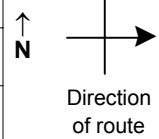
Date 10/04/06

County MUS

Municipality Muskingum County

Highway name & number 0076 (NARROWS RD)

Street classification STANDARD RURAL



Log point	* **		PHYSICAL CONDITION						* **		TRAFFIC CONTROL DEVICES				SPEED		ACCIDENTS	Test Runs
															85%	PACE		
3.4											R2-1-35	T						
3.3																		
3.2																		
3.1								○			W1-3R	T						
3.0			●					○										
2.9								○										
2.8								○			W1-5L	T						

Edge of berm | 3 | 9 | Edge of pavement | 9 | 3 | Edge of berm

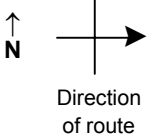
Sheet 5 of 8 sheets

SPEED STUDY DATA SHEET

Date 10/04/06

County MUS

Municipality Muskingum County



Highway name & number 0076 (NARROWS RD)

Street classification STANDARD RURAL

Log point	*	**	PHYSICAL CONDITION										*	**	TRAFFIC CONTROL DEVICES			SPEED		ACCIDENTS	Test Runs		
			85%	PACE																			
4.1																							
4.0																							
3.9																							
3.8																							
3.7																							
3.6																							
3.5																							

TR 91 (THOMAS RD)

TR 118 (SCHOOL HOUSE RD)

R2-1-35

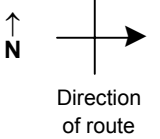
Edge of berm | 3 | 9 | Edge of pavement | 9 | 3 | Edge of berm

SPEED STUDY DATA SHEET

Date 10/04/06

County MUS

Municipality Muskingum County



Highway name & number 0076 (NARROWS RD)

Street classification STANDARD RURAL

Log point	* **		PHYSICAL CONDITION										* **		TRAFFIC CONTROL DEVICES				SPEED		ACCIDENTS	Test Runs		
																	85%	PACE						
4.8																								
4.7																								
4.6																								
4.5																								
4.4																								
4.3																								
4.2																								

▲ R2-1-35



Edge of berm | 3 | 9 | Edge of pavement | 9 | 3 | Edge of berm

SPEED STUDY DATA SHEET

Date 10/04/06

County MUS

Municipality Muskingum County



Highway name & number 0076 (NARROWS RD)

Street classification STANDARD RURAL

Direction of route

Log point	* **		PHYSICAL CONDITION										* **		TRAFFIC CONTROL DEVICES					SPEED		ACCIDENTS	Test Runs
																				85%	PACE		
5.5																							
5.4																							
5.3																							
5.2																							
5.1																							
5.0																							
4.9																							

Edge of berm | 3 | 9 | Edge of pavement | 9 | 3 | Edge of berm