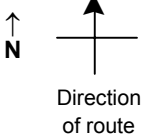


# SPEED STUDY DATA SHEET

Date 09/26/06

County MUS

Municipality Muskingum County



Highway name & number 0079 (WION RIDGE RD)

Street classification STANDARD RURAL

Log point	*	**	PHYSICAL CONDITION						*	**	TRAFFIC CONTROL DEVICES			SPEED		ACCIDENTS	Test Runs
														85%	PACE		
0.6																	
0.5							○										
0.4																	
0.3																	
0.2																	
0.1							○										
0.0			⊕										S3-1				
			⌵	CR 226 (BLUE ROCK CHURCH RD)	⌶							R1-1	T				

Edge of berm | 3 | 7 | Edge of pavement | 7 | 3 | Edge of berm





# SPEED STUDY DATA SHEET

Date 09/26/06

County MUS

Municipality Muskingum County

↑  
N



Direction  
of route

Highway name & number 0079 (WION RIDGE RD)

Street classification STANDARD RURAL

Log point	* **		PHYSICAL CONDITION										* **		TRAFFIC CONTROL DEVICES				SPEED		ACCIDENTS	Test Runs		
																	85%	PACE						
2.7																								
2.6																								
2.5																								
2.4																								
2.3																								
2.2																								
2.1																								

Edge of berm | 3 | 7 | Edge of pavement | 7 | 3 | Edge of berm

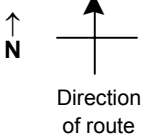
Sheet 4 of 5 sheets

# SPEED STUDY DATA SHEET

Date 09/26/06

County MUS

Municipality Muskingum County



Highway name & number 0079 (WION RIDGE RD)

Street classification STANDARD RURAL

Log point	*	**	PHYSICAL CONDITION										*	**	TRAFFIC CONTROL DEVICES				SPEED		ACCIDENTS	Test Runs	
																			85%	PACE			
3.4																							
3.3																							
3.2																							
3.1																							
3.0																							
2.9																							
2.8																							

Edge of berm | 3 | 7 | Edge of pavement | 7 | 3 | Edge of berm