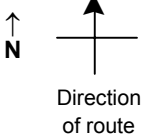


# SPEED STUDY DATA SHEET

Date 10/03/06

County MUS

Municipality Muskingum County



Highway name & number 0082 (DOVERSPIKE DR)

Street classification STANDARD RURAL

Log point	*	**	PHYSICAL CONDITION								*	**	TRAFFIC CONTROL DEVICES				SPEED		ACCIDENTS	Test Runs
			85%		PACE															
0.6																				
0.5																				
0.4																				
0.3																				
0.2																				
0.1																				
0.0																				

TR 82 (KNIPE RD)



Edge of berm | 3 | 8 | Edge of pavement | 8 | 3 | Edge of berm

