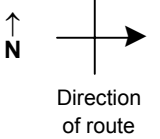


# SPEED STUDY DATA SHEET

Date 09/27/06

County MUS

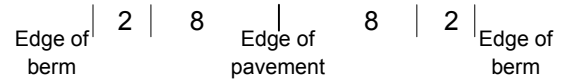
Municipality Muskingum County



Highway name & number 0083 (GREEN VALLEY RD)

Street classification STANDARD RURAL

Log point	* **		PHYSICAL CONDITION										* **		TRAFFIC CONTROL DEVICES				SPEED		ACCIDENTS	Test Runs						
																	85%	PACE										
0.6																												
0.5			OO																									
0.4																												
0.3			<div style="display: flex; justify-content: space-between; align-items: center;"> <div style="text-align: center;"> <p>CR 105 (PINE LAKE RD)</p> </div> <div style="text-align: center;"> <p>SR 313</p> </div> </div>												W1-1L		W1-5R											
0.2															R-94/18 Ton		R-94/18 Ton											
0.1															OM-3R		OM-3L											
0.0															OM-3L		OM-3R											
															R2-1-35		W1-1R											
															R1-1		R2-1-35											



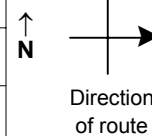


# SPEED STUDY DATA SHEET

Date 09/27/06

County MUS

Municipality Muskingum County



Highway name & number 0083 (GREEN VALLEY RD)

Street classification STANDARD RURAL

Log point	* **		PHYSICAL CONDITION										* **		TRAFFIC CONTROL DEVICES				SPEED		ACCIDENTS	Test Runs			
															85%	PACE									
2.0			<p style="text-align: center;">CR 22 (TOM RD)</p>												OM-3R	T		T	OM-3L						
1.9																									
1.8															R2-1-35	T									
1.7																									
1.6																									
1.5																									
1.4			<p style="text-align: center;">GOLF COURSE ENT</p>												OM-3R	T		T	OM-3L						
															OM-3L	T		T	OM-3R						

Edge of berm | 2 | 8 | Edge of pavement | 8 | 2 | Edge of berm

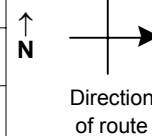


# SPEED STUDY DATA SHEET

Date 09/27/06

County MUS

Municipality Muskingum County



Highway name & number 0083 (GREEN VALLEY RD)

Street classification STANDARD RURAL

Log point	* **		PHYSICAL CONDITION								* **		TRAFFIC CONTROL DEVICES				SPEED		ACCIDENTS	Test Runs	
																	85%	PACE			
3.4																					
3.3														OM-3R	T						
														R-94/15 Ton	T	o					
														OM-3L	T	o					
3.2																					
3.1																					
3.0																					
2.9																					
2.8																					

Edge of berm | 2 | 8 | Edge of pavement | 8 | 2 | Edge of berm

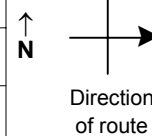


# SPEED STUDY DATA SHEET

Date 09/27/06

County MUS

Municipality Muskingum County



Highway name & number 0083 (GREEN VALLEY RD)

Street classification STANDARD RURAL

Log point	* **		PHYSICAL CONDITION										* **		TRAFFIC CONTROL DEVICES				SPEED		ACCIDENTS	Test Runs
																			85%	PACE		
4.8																						
4.7																						
4.6																						
4.5																						
4.4																						
4.3																						
4.2																						

Edge of berm | 2 | 8 | Edge of pavement | 8 | 2 | Edge of berm

