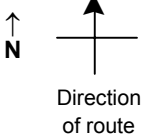


SPEED STUDY DATA SHEET

Date 09/26/06

County MUS

Municipality Muskingum County



Highway name & number 0086 (SWACKHAMMER RD)

Street classification STANDARD RURAL

Log point	* **		PHYSICAL CONDITION										* **		TRAFFIC CONTROL DEVICES				SPEED		ACCIDENTS	Test Runs
															85%	PACE						
0.6			TR 262 (PAYNE RD)																			
0.5																						
0.4																						
0.3																						
0.2																						
0.1																						
0.0			CR 7 (CANNELVILLE RD)												R1-1							

Edge of berm
2 | 9
Edge of pavement
9 | 2
Edge of berm

SPEED STUDY DATA SHEET

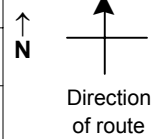
Date 09/26/06

County MUS

Municipality Muskingum County

Highway name & number 0086 (SWACKHAMMER RD)

Street classification STANDARD RURAL



Log point	* **		PHYSICAL CONDITION										* **		TRAFFIC CONTROL DEVICES				SPEED		ACCIDENTS	Test Runs		
															85%	PACE								
2.0																								
1.9																								
1.8																								
1.7																								
1.6																								
1.5																								
1.4																								

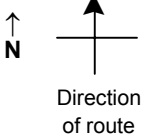
Edge of berm | 2 | 9 | Edge of pavement | 9 | 2 | Edge of berm

SPEED STUDY DATA SHEET

Date 09/26/06

County MUS

Municipality Muskingum County



Highway name & number 0086 (SWACKHAMMER RD)

Street classification STANDARD RURAL

Log point	* **		PHYSICAL CONDITION										* **		TRAFFIC CONTROL DEVICES				SPEED		ACCIDENTS	Test Runs
			85%	PACE																		
2.7			○				∩	CR 32 (BAUGHMAN RD)	∩								R1-1					
2.6																						
2.5											○											
2.4																						
2.3																						
2.2																						
2.1											○					T	W1-8					
																T	W1-8					
																T	W1-8					

Edge of berm | 2 | 9
Edge of pavement | 9 | 2
Edge of berm