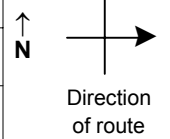


SPEED STUDY DATA SHEET

Date 09/26/06

County MUS

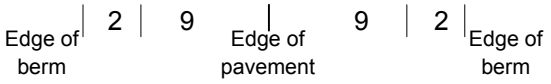
Municipality Muskingum County



Highway name & number 0088 (FULTON ROSE RD)

Street classification STANDARD RURAL

Log point	* **		PHYSICAL CONDITION								* **		TRAFFIC CONTROL DEVICES				SPEED		ACCIDENTS	Test Runs
																	85%	PACE		
0.6																				
0.5																				
0.4																				
0.3																				
0.2																				
0.1																				
0.0																				

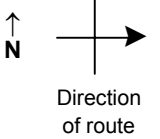


SPEED STUDY DATA SHEET

Date 09/26/06

County MUS

Municipality Muskingum County



Highway name & number 0088 (FULTON ROSE RD)

Street classification STANDARD RURAL

Log point	* **		PHYSICAL CONDITION										* **		TRAFFIC CONTROL DEVICES				SPEED		ACCIDENTS	Test Runs		
																	85%	PACE						
1.3																								
1.2																								
1.1																								
1.0																								
0.9																								
0.8																								
0.7																								

Edge of berm | 2 | 9 | Edge of pavement | 9 | 2 | Edge of berm

SPEED STUDY DATA SHEET

 Date 09/26/06

 County MUS

 Municipality Muskingum County

 Highway name & number 0088 (FULTON ROSE RD)

 Street classification STANDARD RURAL

↑ N



Direction of route

Log point	* **		PHYSICAL CONDITION								* **		TRAFFIC CONTROL DEVICES				SPEED		ACCIDENTS	Test Runs
																	85%	PACE		
2.0																				
															▬ W11-H13/park					
1.9																				
															W13-1-25					
															W1-5L					
1.8																				
1.7																				
1.6																				
1.5																				
1.4																				
															▬ R2-1-35					

Edge of berm | 2 | 9 | Edge of pavement | 9 | 2 | Edge of berm

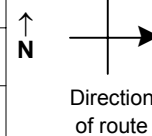
Sheet 3 of 6 sheets

SPEED STUDY DATA SHEET

Date 09/26/06

County MUS

Municipality Muskingum County



Highway name & number 0088 (FULTON ROSE RD)

Street classification STANDARD RURAL

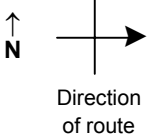
Log point	*	**	PHYSICAL CONDITION										*	**	TRAFFIC CONTROL DEVICES			SPEED		ACCIDENTS	Test Runs
																		85%	PACE		
			○																		
2.7											○										
											○										
2.6																					
2.5																▲ W1-5L					
																▲ R2-1-35					
2.4																					
2.3																					
2.2																					
2.1																					

Edge of berm | 2 | 9 | Edge of pavement | 9 | 2 | Edge of berm

SPEED STUDY DATA SHEET

 Date 09/26/06

 County MUS

 Municipality Muskingum County

 Highway name & number 0088 (FULTON ROSE RD)

 Street classification STANDARD RURAL

Log point	* **		PHYSICAL CONDITION										* **		TRAFFIC CONTROL DEVICES				SPEED		ACCIDENTS	Test Runs				
																	85%	PACE								
3.4			○	○													W1-3R	└			┌	R2-1-35				
3.3																	OM-3R	└			┌	OM-3L				
3.2			○														OM-3L	└			┌	OM-3R				
3.0			○														W1-5R	└			┌	W1-3R				
2.8																										

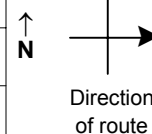
Edge of berm | 2 | 9 | Edge of pavement | 9 | 2 | Edge of berm

SPEED STUDY DATA SHEET

Date 09/26/06

County MUS

Municipality Muskingum County



Highway name & number 0088 (FULTON ROSE RD)

Street classification STANDARD RURAL

Log point	* **		PHYSICAL CONDITION										* **		TRAFFIC CONTROL DEVICES				SPEED		ACCIDENTS	Test Runs	
																		85%	PACE				
4.1																							
4.0																							
3.9																							
3.8																							
3.7																							
3.6																							
3.5																							

Edge of berm | 2 | 9 | Edge of pavement | 9 | 2 | Edge of berm