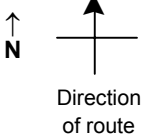


SPEED STUDY DATA SHEET

Date 10/10/06

County MUS

Municipality Muskingum County



Highway name & number 0092 (SAND RIDGE RD)

Street classification STANDARD RURAL

Log point	*	**	PHYSICAL CONDITION										*	**	TRAFFIC CONTROL DEVICES			SPEED		ACCIDENTS	Test Runs	
																		85%	PACE			
0.6																						
0.5																						
0.4																						
0.3																						
0.2																						
0.1																						
0.0																						

Edge of berm | 2 | 9 | Edge of pavement | 9 | 2 | Edge of berm

SPEED STUDY DATA SHEET

Date 10/10/06

County MUS

Municipality Muskingum County

↑
N



Direction
of route

Highway name & number 0092 (SAND RIDGE RD)

Street classification STANDARD RURAL

Log point	*	**	PHYSICAL CONDITION												*	**	TRAFFIC CONTROL DEVICES			SPEED		ACCIDENTS	Test Runs	
																				85%	PACE			
1.3																								
1.2																								
1.1																								
1.0																								
0.9																								
0.8																								
0.7																								

Edge of berm | 2 | 9 | Edge of pavement | 9 | 2 | Edge of berm

SPEED STUDY DATA SHEET

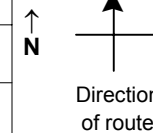
Date 10/10/06

County MUS

Municipality Muskingum County

Highway name & number 0092 (SAND RIDGE RD)

Street classification STANDARD RURAL



Log point	* **	PHYSICAL CONDITION										* **	TRAFFIC CONTROL DEVICES				SPEED		ACCIDENTS	Test Runs								
																	85%	PACE										
2.0												MURREY DR	Y															
1.9														O														
1.8																												
1.7												TR 287 (BURKART RD)	Y															
1.6														O														
1.5														O														
1.4																												

Edge of berm | 2 | 9 | Edge of pavement | 9 | 2 | Edge of berm

Sheet 3 of 4 sheets

SPEED STUDY DATA SHEET

Date 10/10/06

County MUS

Municipality Muskingum County



Highway name & number 0092 (SAND RIDGE RD)

Street classification STANDARD RURAL

Direction of route

Log point	* **		PHYSICAL CONDITION						* **		TRAFFIC CONTROL DEVICES			SPEED		ACCIDENTS	Test Runs		
														85%	PACE				
2.7					Y	CR 35 (PINECREST DR)	Y							T	R1-1				
2.6																			
2.5										W11-5		T							
2.4																			
2.3																			
2.2			O																
2.1																			

Edge of berm | 2 | 9 | Edge of pavement | 9 | 2 | Edge of berm