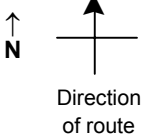


SPEED STUDY DATA SHEET

Date 10/04/06

County MUS

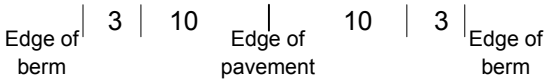
Municipality Muskingum County



Highway name & number 0094 (ASHCRAFT RD)

Street classification STANDARD RURAL

Log point	* **		PHYSICAL CONDITION										* **		TRAFFIC CONTROL DEVICES				SPEED		ACCIDENTS	Test Runs			
																	85%	PACE							
3.8																									
3.7																									
3.6																									
3.5															R2-1-35	T			I-H2F						
															W11-7	T			W1-5L						
3.4															W13-1-20	T									
															W1-5L	T									
3.3																									
3.2																									



TR 93 (W CARLISLE RD)
TR 93A (ASHCRAFT RD)