

# SPEED STUDY DATA SHEET

Date 09/27/06

County MUS

Municipality Muskingum County

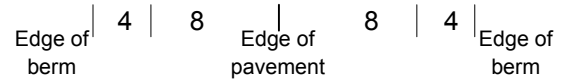


Highway name & number 0097 (SUGARGROVE RD)

Street classification STANDARD RURAL

Direction of route

Log point	* **		PHYSICAL CONDITION								* **		TRAFFIC CONTROL DEVICES				SPEED		ACCIDENTS	Test Runs
																	85%	PACE		
0.6																				
0.5																				
0.4																				
0.3																				
0.2																				
0.1																				
0.0																				

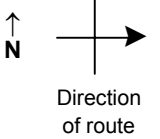


CR 45 (CUTLER LAKE RD)1

# SPEED STUDY DATA SHEET

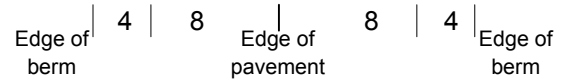
 Date 09/27/06

 County MUS

 Municipality Muskingum County

 Highway name & number 0097 (SUGARGROVE RD)

 Street classification STANDARD RURAL

Log point	*	**	PHYSICAL CONDITION										*	**	TRAFFIC CONTROL DEVICES			SPEED		ACCIDENTS	Test Runs	
			85%		PACE		OM-3R		OM-3L		OM-3R											
1.3																						
1.2																						
1.1																						
1.0																S3-4						
0.9																						
0.8																						
0.7																OM-3R						
																OM-3L						

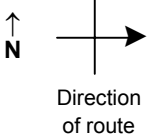


# SPEED STUDY DATA SHEET

Date 09/27/06

County MUS

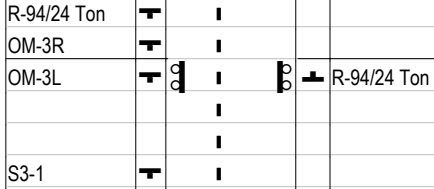
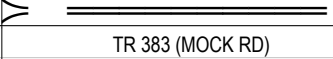
Municipality Muskingum County



Highway name & number 0097 (SUGARGROVE RD)

Street classification STANDARD RURAL

Log point	* **		PHYSICAL CONDITION				* **		TRAFFIC CONTROL DEVICES			SPEED		ACCIDENTS	Test Runs
											85%	PACE			
2.0															
1.9															
1.8															
1.7															
1.6															
1.5															
1.4															



Edge of berm | 4 | 8 | Edge of pavement | 8 | 4 | Edge of berm

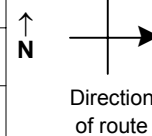
Sheet 3 of 13 sheets

# SPEED STUDY DATA SHEET

Date 09/27/06

County MUS

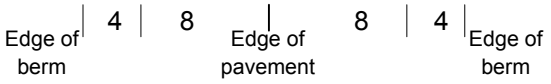
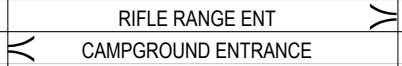
Municipality Muskingum County



Highway name & number 0097 (SUGARGROVE RD)

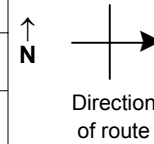
Street classification STANDARD RURAL

Log point	* **		PHYSICAL CONDITION										* **		TRAFFIC CONTROL DEVICES				SPEED		ACCIDENTS	Test Runs					
															85%	PACE											
2.7																OM-3R	T		T	OM-3L							
2.6																OM-3L	T		T	OM-3R							
2.5																											
2.4																											
2.3																											
2.2																											
2.1																											



# SPEED STUDY DATA SHEET

Date 09/27/06 County MUS Municipality Muskingum County



Highway name & number 0097 (SUGARGROVE RD) Street classification STANDARD RURAL

Log point	PHYSICAL CONDITION						TRAFFIC CONTROL DEVICES						SPEED		ACCIDENTS	Test Runs
	*	*	*	*	*	*	OM-3R					OM-3L	85%	PACE		
3.4																
3.3																
3.2																
3.1																
3.0																
2.9																
2.8																

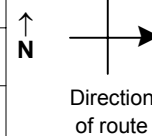
Edge of berm | 4 | 8 | Edge of pavement | 8 | 4 | Edge of berm

# SPEED STUDY DATA SHEET

Date 09/27/06

County MUS

Municipality Muskingum County



Highway name & number 0097 (SUGARGROVE RD)

Street classification STANDARD RURAL

Log point	*	**	PHYSICAL CONDITION					*	**	TRAFFIC CONTROL DEVICES			SPEED		ACCIDENTS	Test Runs
													85%	PACE		
4.1			○							▲	W5-2					
										▲	W11-7					
										▲	W13-1-35					
										▲	Slow children					
4.0																
3.9																
3.8																
3.7			⊕													
							○									
3.6							○									
3.5																

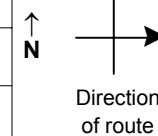
Edge of berm | 4 | 8 | Edge of pavement | 8 | 4 | Edge of berm

# SPEED STUDY DATA SHEET

Date 09/27/06

County MUS

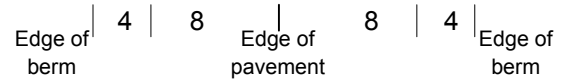
Municipality Muskingum County



Highway name & number 0097 (SUGARGROVE RD)

Street classification STANDARD RURAL

Log point	* **	PHYSICAL CONDITION										* **	TRAFFIC CONTROL DEVICES				SPEED		ACCIDENTS	Test Runs
																	85%	PACE		
4.8																				
4.7																				
4.6																				
4.5										○										
4.4		○																		
4.3												S3-1	T							
												W11-7	T							
4.2		○										W5-2	T							
												OM-3R	T			T	OM-3L			
												OM-3L	T		B	T	OM-3R			

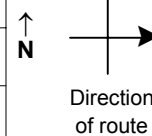


# SPEED STUDY DATA SHEET

Date 09/27/06

County MUS

Municipality Muskingum County



Highway name & number 0097 (SUGARGROVE RD)

Street classification STANDARD RURAL

Log point	* **		PHYSICAL CONDITION										* **		TRAFFIC CONTROL DEVICES				SPEED		ACCIDENTS	Test Runs
																			85%	PACE		
5.5																						
5.4															S3-4	T						
5.3			<p style="text-align: center;">CR 79 (WION RIDGE RD)</p>												OM-3R	T		T	OM-3L			
5.3															OM-3L	T		T	OM-3R			
5.2															OM-3R	T		T	OM-3L			
5.2															OM-3L	T		T	OM-3R			
5.1																						
5.0																						
4.9																						

Edge of berm | 4 | 8 | Edge of pavement | 8 | 4 | Edge of berm

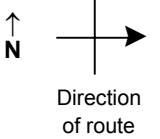


# SPEED STUDY DATA SHEET

Date 09/27/06

County MUS

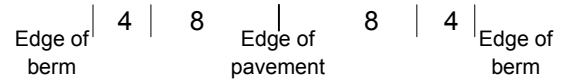
Municipality Muskingum County



Highway name & number 0097 (SUGARGROVE RD)

Street classification STANDARD RURAL

Log point	* **		PHYSICAL CONDITION							* **		TRAFFIC CONTROL DEVICES				SPEED		ACCIDENTS	Test Runs	
																85%	PACE			
6.2																				
6.1																				
6.0																				
5.9																				
5.8																				
5.7																				
5.6																				



# SPEED STUDY DATA SHEET

Date 09/27/06

County MUS

Municipality Muskingum County



Highway name & number 0097 (SUGARGROVE RD)

Street classification STANDARD RURAL

Direction of route

Log point	* **	PHYSICAL CONDITION	* **	TRAFFIC CONTROL DEVICES	SPEED		ACCIDENTS	Test Runs
					85%	PACE		
		○						
6.9								
		○						
6.8								
		○						
6.7								
		○						
6.6								
		○						
6.5								
		○						
6.4								
6.3								

R12-1 (30)    T    |    T    OM-3L  
 OM-3R    T    |    T    OM-3R  
 OM-3L    T    |    T    R12-1 (30)

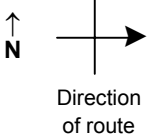
Edge of berm    4    |    8    |    Edge of pavement    8    |    4    |    Edge of berm

# SPEED STUDY DATA SHEET

Date 09/27/06

County MUS

Municipality Muskingum County



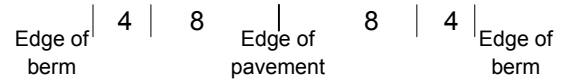
Highway name & number 0097 (SUGARGROVE RD)

Street classification STANDARD RURAL

Log point	*	**	PHYSICAL CONDITION								*	**	TRAFFIC CONTROL DEVICES			SPEED		ACCIDENTS	Test Runs
			8	8	4	4	8	8	4	4			85%	PACE					
7.6																			
7.5																			
7.4														▬ R1-2					
7.3																			
7.2																			
7.1																			
7.0																			

CR 452 (RIDGEVIEW RD)

R1-2

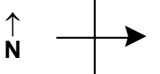


# SPEED STUDY DATA SHEET

Date 09/27/06

County MUS

Municipality Muskingum County

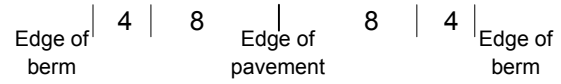


Highway name & number 0097 (SUGARGROVE RD)

Street classification STANDARD RURAL

Direction of route

Log point	*	**	PHYSICAL CONDITION								*	**	TRAFFIC CONTROL DEVICES				SPEED		ACCIDENTS	Test Runs
			85%		PACE															
8.3																				
8.2																				
8.1																				
8.0																				
7.9																				
7.8																				
7.7																				

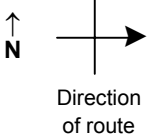


# SPEED STUDY DATA SHEET

Date 09/27/06

County MUS

Municipality Muskingum County



Highway name & number 0097 (SUGARGROVE RD)

Street classification STANDARD RURAL

Log point	* **		PHYSICAL CONDITION										* **		TRAFFIC CONTROL DEVICES				SPEED		ACCIDENTS	Test Runs	
																	85%	PACE					
9.0																							
8.9																							
8.8																							
8.7																							
8.6																							
8.5																							
8.4																							

SR 284

R1-1

CR 59 (HIGH HILL RD)

Edge of berm | 4 | 8 | Edge of pavement | 8 | 4 | Edge of berm