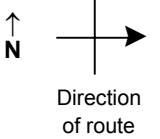


SPEED STUDY DATA SHEET

Date 10/03/06

County MUS

Municipality Muskingum County



Highway name & number 0098 (PROSPECT CHURCH RD)

Street classification STANDARD RURAL

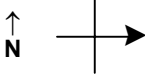
Log point	* **		PHYSICAL CONDITION						* **		TRAFFIC CONTROL DEVICES				SPEED		ACCIDENTS	Test Runs	
															85%	PACE			
0.6					TR 165 (BLACK SNAKE RD)	Y													
0.5																			
0.4																			
0.3																			
0.2																			
0.1																			
0.0					CR 164 (MADISON HALL RD)	Y						T			R1-1				

Edge of berm | 4 | 9 | Edge of pavement | 9 | 4 | Edge of berm

SPEED STUDY DATA SHEET

 Date 10/03/06

 County MUS

 Municipality Muskingum County

 Highway name & number 0098 (PROSPECT CHURCH RD)

 Street classification STANDARD RURAL

Direction of route

Log point	PHYSICAL CONDITION				TRAFFIC CONTROL DEVICES				SPEED		ACCIDENTS	Test Runs	
	*	**	***	****	*	**	***	****	85%	PACE			
1.3				Y									
1.2			Y		R1-1	T							
1.1		O			W11-7	T							
1.0													
0.9													
0.8													
0.7													

Edge of berm | 4 | 9 | Edge of pavement | 9 | 4 | Edge of berm

Sheet 2 of 2 sheets