

SPEED STUDY DATA SHEET

Date 10/03/06

County MUS

Municipality Muskingum County



Highway name & number 0107 (CLAY PIKE)

Street classification STANDARD RURAL

Direction of route

Log point	*	**	PHYSICAL CONDITION						*	**	TRAFFIC CONTROL DEVICES			SPEED		ACCIDENTS	Test Runs
0.6					∩					-							
					TR 615 (HARDESTY RD)					-							
0.5										-							
0.4										-							
0.3										-							
0.2										-							
0.1										-							
0.0					∩					-							
					TR 107 (SOUTHERN RD)					-							

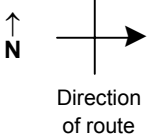
Edge of berm | 2 | 8 | Edge of pavement | 8 | 2 | Edge of berm

SPEED STUDY DATA SHEET

Date 10/03/06

County MUS

Municipality Muskingum County



Highway name & number 0107 (CLAY PIKE)

Street classification STANDARD RURAL

Log point	* **		PHYSICAL CONDITION										* **		TRAFFIC CONTROL DEVICES				SPEED		ACCIDENTS	Test Runs			
																	85%	PACE							
1.3			○																						
			○																						
1.2																									
1.1			○																						
1.0																									
0.9																									
0.8																									
0.7																									

CR 368 (WILSON PL) Y

Edge of berm | 2 | 8 | Edge of pavement | 8 | 2 | Edge of berm

